


LOC I-MGM 109.9	APP CRS 097°	Rwy Ldg 9020
		TDZE 219
		Apt Elev 232

ILS Z or LOC Z RWY 10

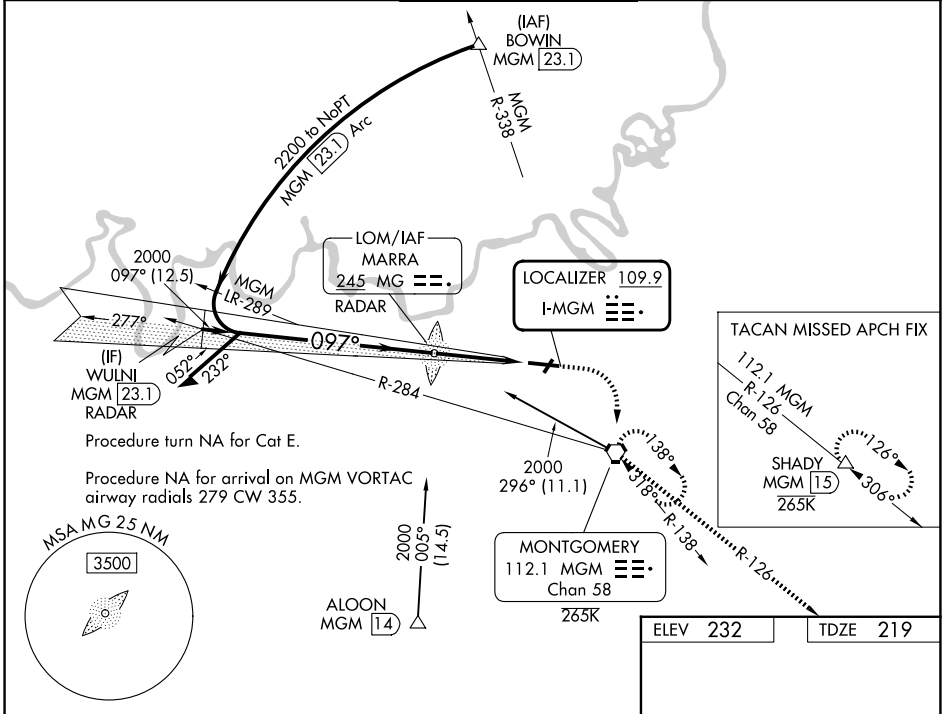
MONTGOMERY RGNL (DANNELLY FLD) (MGM)

RADAR or DME or ADF required.

⚠ Circling NA for Cat E north of Rwy 10-28. For inop ALS, increase S-ILS 10** Cat E visibility to RVR 4000, and increase S-LOC 10 Cat E visibility to 1 $\frac{3}{8}$ SM. **RVR 1800 authorized with the use of FD or AP or HUD to DA.

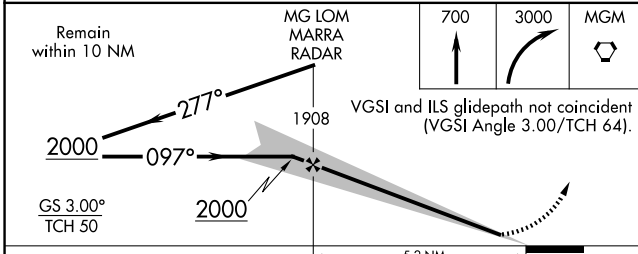
MALSR  MISSED APPROACH: Climb to 700 then climbing right turn to 3000 direct MGM VORTAC and hold, continue climb-in-hold to 3000 (TACAN aircraft continue climb to 3500 on MGM VORTAC R-126 to SHADY/MGM 1.5 DME and hold SE, RT, 306° inbound).

ATIS 120.675	MONTGOMERY APP CON* 124.0 363.025	DANNELLY TOWER* 119.7 (CTAF) 360.85	GND CON 121.7 348.6	UNICOM 122.95
------------------------	---	---	-------------------------------	-------------------------



SE-4, 16 APR 2026 to 14 MAY 2026

SE-4, 16 APR 2026 to 14 MAY 2026



ELEV 232	TDZE 219
----------	----------

CATEGORY	A	B	C	D	E
S-ILS 10**	419/24 200 (200- $\frac{1}{2}$)				
S-LOC 10	660/24	441 (500- $\frac{1}{2}$)	660/45 441 (500- $\frac{3}{8}$)		
CIRCLING	700-1	468 (500-1)	800-1 $\frac{1}{2}$ 568 (600-1 $\frac{1}{2}$)	860-2 628 (700-2)	860-2 $\frac{1}{4}$ 628 (700-2 $\frac{1}{4}$)

REIL Rwy 3 **1**
MIRL Rwy 3-21
HIRL Rwy 10-28

FAF to MAP 5.2 NM

Knots	60	90	120	150	180
Min:Sec	5:12	3:28	2:36	2:05	1:44