

ILS or LOC/DME RWY 15

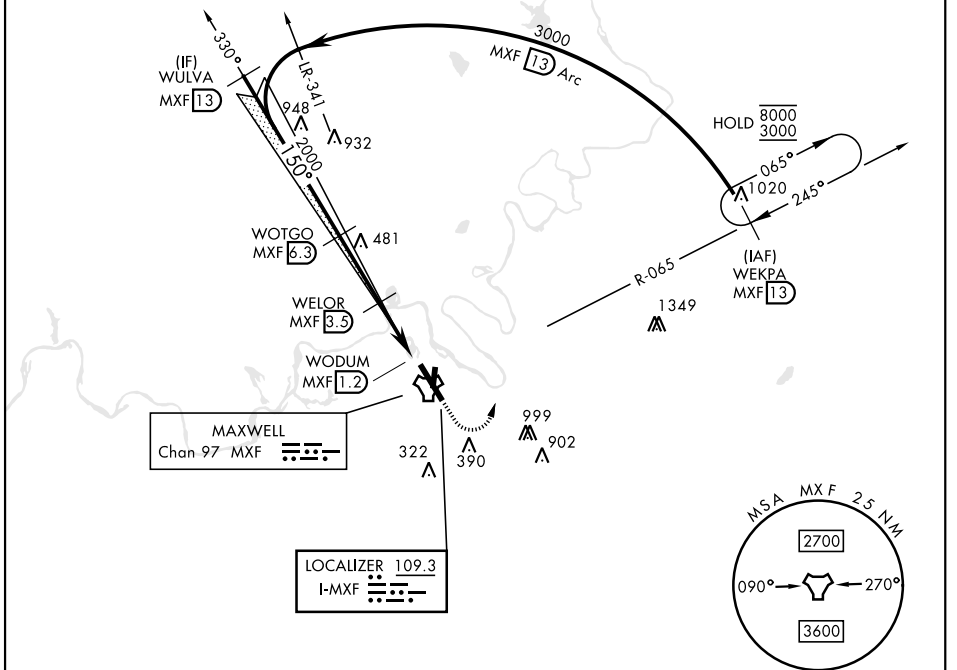
LOC I-MXF 109.3	APCH CRS 150°	Rwy Idg TDZE Arprt Elev 8008 171 171
---------------------------	-------------------------	--

[USAF]

MAXWELL AFB (KMXF)

RADAR required for missed approach. * When ALS inop, increase RVR to 40 and vis to ¾ mile. ** When ALS inop, increase CAT AB RVR to 35 and vis to 1 mile, CAT CDE vis to 1¼ mile. *** Circling not authorized E of Rwy 15-33.		ALSF-1 	MISSED APPROACH: Climb to 1000, then climbing left turn to 3000 to intercept MXF TACAN R-065 outbound to 13 DME (WEKPA) and hold.
--	--	------------	---

ATIS ★ 134.7 269.9	MONTGOMERY APP CON ★ 121.2 269.05 (N) 124.0 363.025 (S)	TOWER ★ 118.15 253.5	GND CON ★ 127.15 289.4
------------------------------	---	--------------------------------	----------------------------------



EMERG SAFE ALT 100 NM 5000

WULVA MXF 13 3000 150° 2000 GS 3.00° TCH 51	WOTGO MXF 6.3 1100	WELOR MXF 3.5 1100	WODUM MXF 1.2 0.5	1000	3000 MXF R-065 WEKPA R-065 13	ELEV 171	TDZE 171
CATEGORY	A	B	C	D	E		
S-ILS 15 *	371/24		200	(200-½)			
S-LOC 15 **	600/24	429 (500-½)	600/40	429	(500-¾)		
CIRCLING ***	680-1	509 (600-1)	700-1½ 529 (600-1½)	920-2½ 749 (800-2½)	NA	HIRL Rwy 15-33	

ILS or LOC/DME RWY 15

SE-4, 16 APR 2026 to 14 MAY 2026

SE-4, 16 APR 2026 to 14 MAY 2026