

# TACAN RWY 15

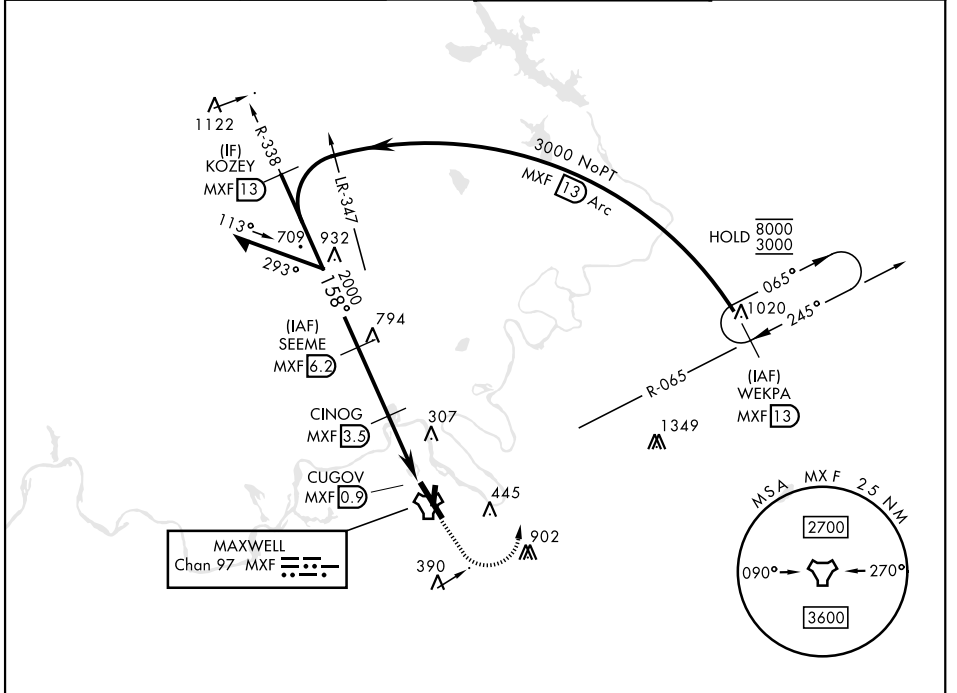
TACAN MXF Chan <b>97</b>	APCH CRS <b>158°</b>	Rwy Idg TDZE <b>171</b> Arpt Elev <b>171</b>
-----------------------------	-------------------------	--

[USAF]

MAXWELL AFB (KMXF)

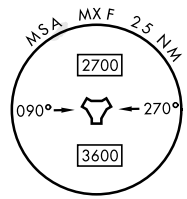
RADAR required for missed approach.		ALSF-1 	MISSED APPROACH: Climb to 1000, then climbing left turn to 3000 to intercept MXF TACAN R-065 outbound to 13 DME (WEKPA) and hold.
* When ALS inop, increase CAT AB RVR to 55 and vis to 1 mile, CAT CDE and vis to 1 1/2 miles. ** Circling not authorized E of Rwy 15-33.			

ATIS ★ <b>134.7 269.9</b>	MONTGOMERY APP CON ★ <b>121.2 269.05 (N)</b> <b>124.0 363.025 (S)</b>	TOWER ★ <b>118.15 253.5</b>	GND CON ★ <b>127.15 289.4</b>
------------------------------	---	--------------------------------	----------------------------------

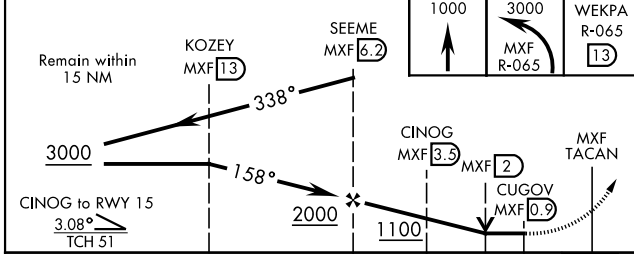


SE-4, 16 APR 2026 to 14 MAY 2026

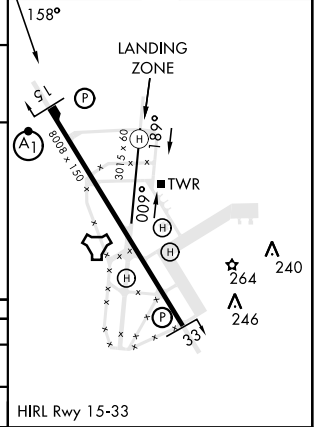
SE-4, 16 APR 2026 to 14 MAY 2026



EMERG SAFE ALT 100 NM 5000



ELEV	171	TDZE	171
------	-----	------	-----



CATEGORY	A	B	C	D	E
S-15 *	620/24	449 (500-1/2)	620/45	449 (500-7/8)	
CIRCLING **	680-1	509 (600-1)	700-1 1/2 529 (600-1 1/2)	920-2 1/2 749 (800-2 1/2)	NA

# TACAN RWY 15