

TACAN RWY 33

TACAN MXF Chan 97	APCH CRS 323°	Rwy Idg TDZE 166 Arprt Elev 171
-----------------------------	-------------------------	---

[USAF]

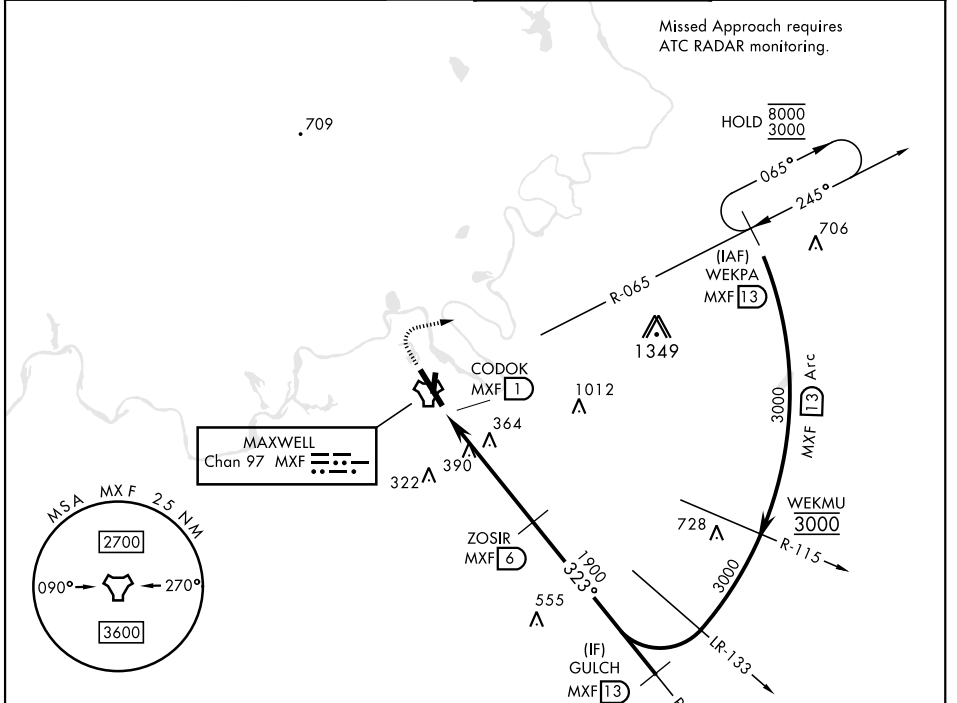
MAXWELL AFB (KMXF)

▼ * Circling not authorized E of Rwy 15-33.

MISSED APPROACH: Climb to 1000, then climbing right turn to 3000 to intercept MXF TACAN R-065 outbound to 13 DME (WEKPA) and hold.

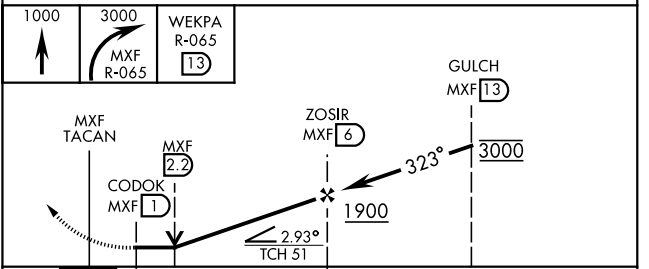
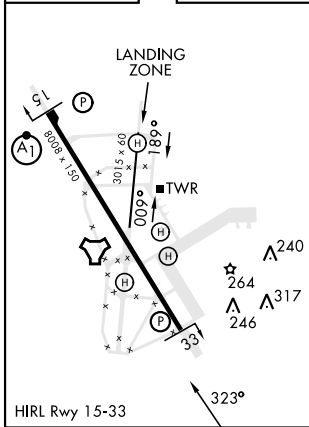
ATIS ★ 134.7 269.9	MONTGOMERY APP CON ★ 121.2 269.05 (N) 124.0 363.025 (S)	TOWER ★ 118.15 253.5	GND CON ★ 127.15 289.4
------------------------------	---	--------------------------------	----------------------------------

Missed Approach requires
ATC RADAR monitoring.



EMERG SAFE ALT 100 NM 5000

ELEV 171	TDZE 166
----------	----------



CATEGORY	A	B	C	D	E
S-33	740-1 574 (600-1)		740-1 5/8 574 (600-1 1/2)		
C CIRCLING *	740-1 569 (600-1)		740-1 5/8 569 (600-1 1/2)	920-2 1/2 749 (800-2 1/2)	NA

TACAN RWY 33

SE-4, 16 APR 2026 to 14 MAY 2026

SE-4, 16 APR 2026 to 14 MAY 2026