

WAAS CH 90518 W12A	APP CRS 117°	Rwy Idg TDZE Apt Elev	6694 544 551
--	------------------------	-----------------------------	---

RNAV (GPS) RWY 12

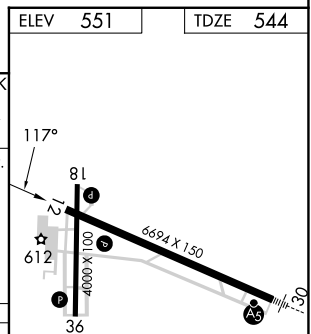
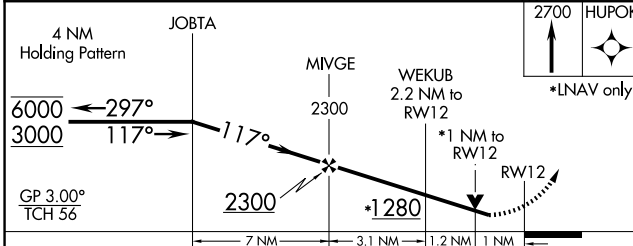
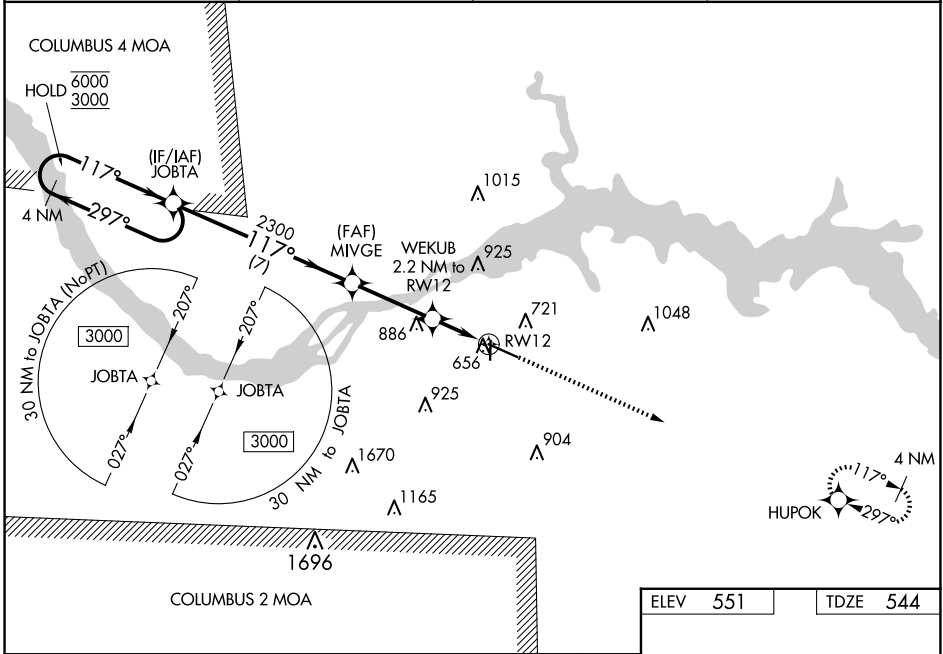
NORTHWEST ALABAMA RGNL (MISL)

RNP APCH.

▼ Rwy 12 helicopter visibility reduction below 3/4 SM NA. For uncompensated Baro-VNAV systems, LNAV/VNAV NA below -4°C or above 54°C. When local altimeter setting not received use Decatur altimeter setting and increase LPV DA to 934 feet, LNAV/VNAV DA to 1025 feet and all MDA 100 feet; increase LPV all Cats visibility 1/4 SM, LNAV/VNAV all Cats visibility 3/8 SM, LNAV Cat C and D visibility 3/8 SM and Circling Cat C and D visibility 1/2 SM. Baro-VNAV and VDP NA when using Decatur altimeter setting.

MISSED APPROACH: Climb to 2700 direct HUPOK and hold.

ASOS 119.425	MEMPHIS CENTER 120.8 307.0	GCO 121.725	UNICOM 123.05 (CTAF)
------------------------	--------------------------------------	-----------------------	--------------------------------



CATEGORY	A	B	C	D
LPV DA		851-1	307 (300-1)	
LNAV/VNAV DA		942-1 1/4	398 (400-1 1/4)	
LNAV MDA		920-1	376 (400-1)	
CIRCLING	1040-1	489 (500-1)	1280-2 729 (800-2)	1280-2 1/4 729 (800-2 1/4)

ELEV	551	TDZE	544
------	-----	------	-----

REIL Rwy 12 1
MIRL Rwy 18-36 1
HIRL Rwy 12-30 1

SE-4, 16 APR 2026 to 14 MAY 2026

SE-4, 16 APR 2026 to 14 MAY 2026