

LOC/DME I-CJH 109.5 Chan 32	APP CRS 240°	Rwy Ldg TDZE Apt Elev 6500 627 629
---	------------------------	--

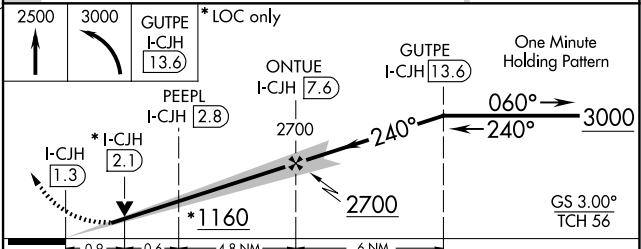
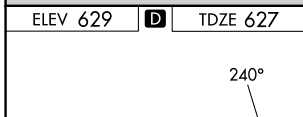
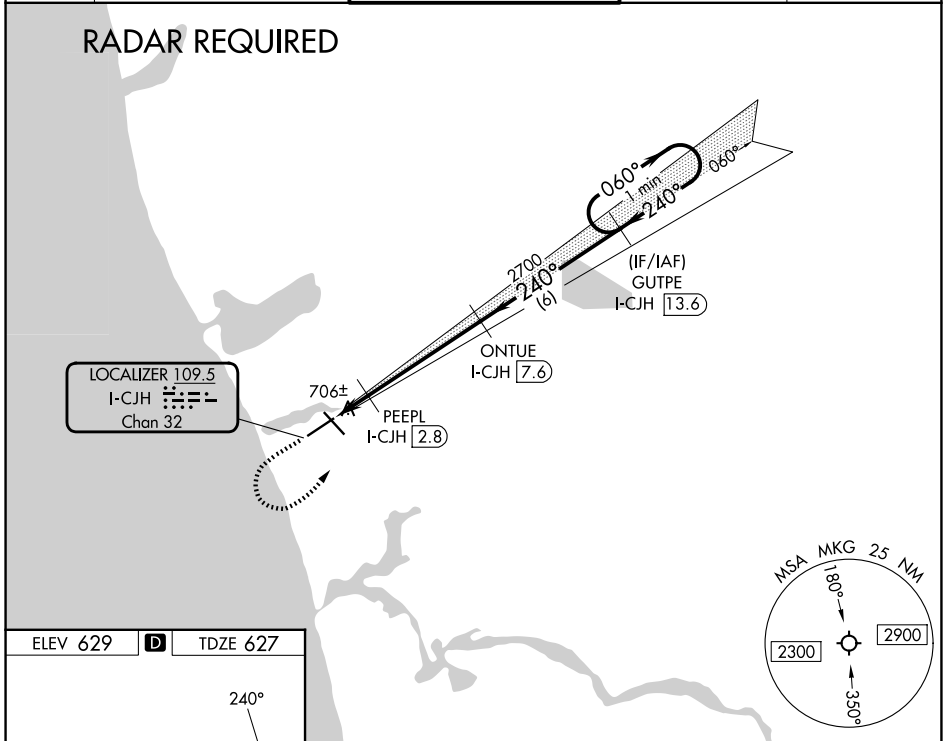
ILS or LOC RWY 24

MUSKEGON COUNTY (MKG)

	DME required. RADAR required. RNAV 1-GPS required.		MISSED APPROACH: Climb to 2500 then climbing left turn to 3000 direct GUTPE and hold.
--	--	--	---

ATIS 124.3	GREAT LAKES APP CON ★ 119.8 290.35 (N) 133.825 290.35 (S)	MUSKEGON TOWER ★ 126.25 (CTAF) 343.725	GND CON 121.6	UNICOM 122.95
----------------------	---	---	-------------------------	-------------------------

RADAR REQUIRED



REIL Rwy 6

REIL Rwy 14

HIRL Rwys 6-24

HIRL Rwys 14-32

FAF to MAP 6.3 NM

Knots	60	90	120	150	180
Min:Sec	6:18	4:12	3:09	2:31	2:06

CATEGORY	A	B	C	D
S-ILS 24		827-½	200 (200-½)	
S-LOC 24		960-½	333 (400-½)	
CIRCLING	1080-1 451 (500-1)	1180-1 551 (600-1)	1200-1½ 571 (600-1½)	1200-2 571 (600-2)