

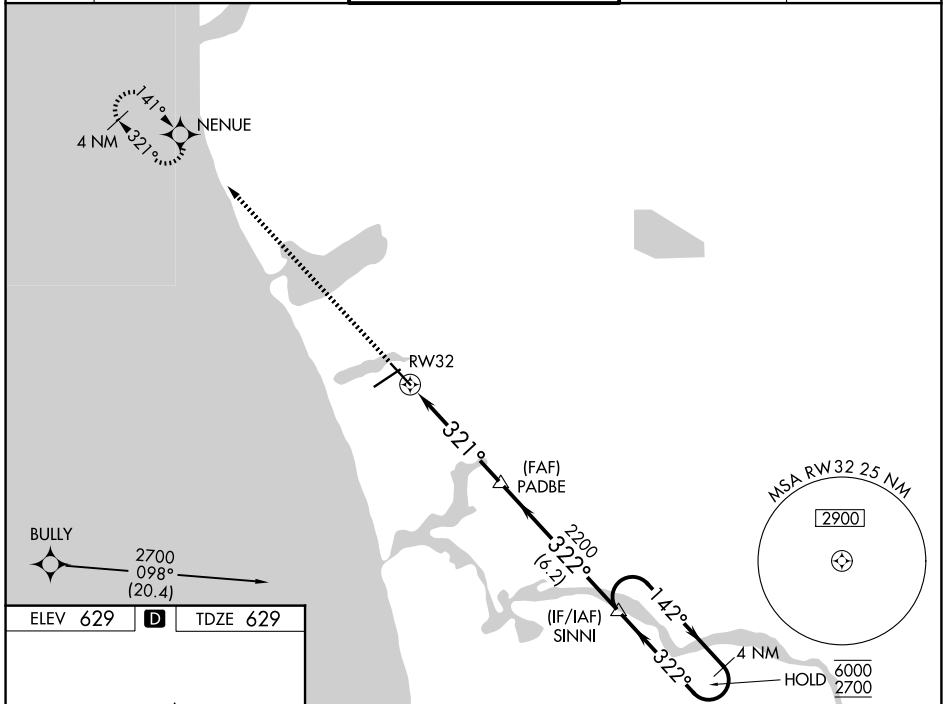
WAAS CH 63010 W32A	APP CRS 321°	Rwy Ldg TDZE Apt Elev	6100 629 629
--	------------------------	-----------------------------	---

RNAV (GPS) RWY 32

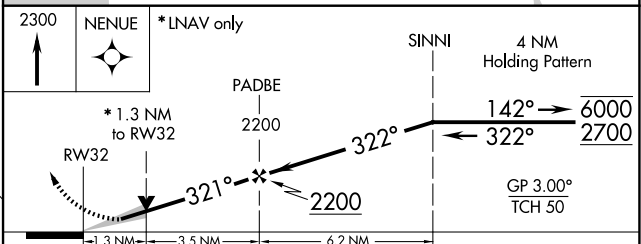
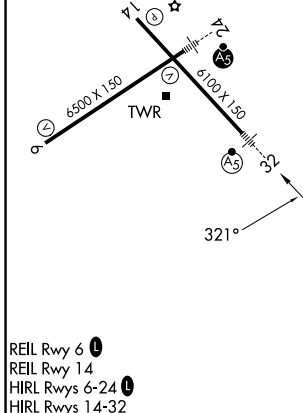
MUSKEGON COUNTY (MKG)

RNP APCH.	<p>▼ For uncompensated Baro-VNAV systems, LNAV/VNAV NA below -18° C or above 54°C.</p> <p>▲ For inop ALS, increase LPV visibility all Cats to RVR 4000, LNAV/VNAV visibility all Cats to RVR 4500, and LNAV visibility Cats A/B to RVR 5500 and Cats C/D to 1½ SM.</p> <p>** RVR 1800 authorized with use of FD or AP or HUD to DA, NA when using Fremont altimeter setting.</p>	MALSR	MISSED APPROACH: Climb to 2300 direct NENUE and hold.
-----------	--	-------	--

ATIS 124.3	GREAT LAKES APP CON * 119.8 290.35 (N) 133.825 290.35 (S)	MUSKEGON TOWER * 126.25 (CTAF) 343.725	GND CON 121.6	UNICOM 122.95
----------------------	---	--	-------------------------	-------------------------



ELEV 629	D	TDZE 629
----------	----------	----------



CATEGORY	A	B	C	D
LPV DA**		829/24	200 (200-½)	
LNAV/VNAV DA		915/24	286 (300-½)	
LNAV MDA	1080/24	451 (500-½)	1080/45	451 (500-¾)
CIRCLING	1080-1 451 (500-1)	1180-1 551 (600-1)	1200-1½ 571 (600-1½)	1200-2 571 (600-2)