

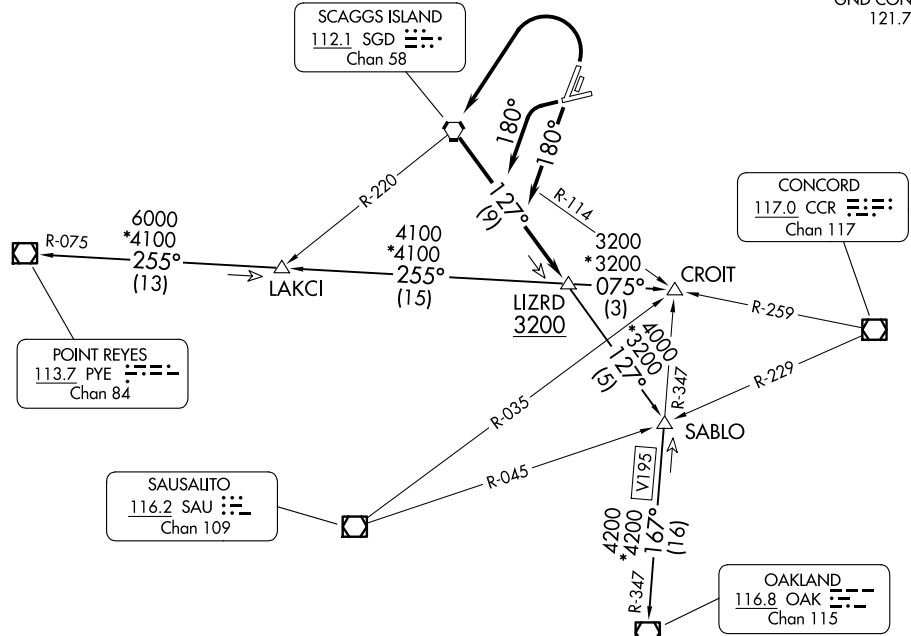
LIZRD FIVE DEPARTURE

AL-281 (FAA)

NAPA COUNTY (APC)
NAPA, CALIFORNIA

**TOP ALTITUDE:
ASSIGNED BY ATC**

OAKLAND CENTER
127.8 353.5
ATIS
124.05
CLNC DEL
127.85
GND CON
121.7



TAKEOFF MINIMUMS

Rwy 6: NA-Obstacles.

Rwys 19L/R: Standard

Rwys 1L/R: Standard with minimum climb of 370' per NM to 1200'.

Rwy 24: Standard with minimum climb of 255' per NM to 3000'.

NOTE: Chart not to scale.

DEPARTURE ROUTE DESCRIPTION

TAKEOFF RUNWAYS 1L/R: Climbing left turn direct SGD VORTAC, proceed outbound on the SGD R-127 to LIZRD INT. Cross LIZRD INT at or above 3200. Thence. . .

TAKEOFF RUNWAYS 19L/R: Climb on heading 180° to intercept and proceed outbound on the SGD R-127 to LIZRD INT. Cross LIZRD INT at or above 3200. Thence. . .

TAKEOFF RUNWAY 24: Climbing left turn on heading 180° to intercept and proceed outbound on the SGD R-127 to LIZRD INT. Cross LIZRD INT at or above 3200. Thence. . .

. . . on (transition) or (assigned route). Maintain ATC assigned altitude.

CROIT TRANSITION (LIZRD5.CROIT): From over LIZRD on PYE R-075 to CROIT.

OAKLAND TRANSITION (LIZRD5.OAK): From over LIZRD on SGD R-127 and OAK R-347 to OAK VOR/DME.

POINT REYES TRANSITION (LIZRD5.PYE): From over LIZRD on PYE R-075 to PYE VOR/DME.

LIZRD FIVE DEPARTURE

(LIZRD5.LIZRD) 10OCT19

NAPA, CALIFORNIA
NAPA COUNTY (APC)

SW-2, 16 APR 2026 to 14 MAY 2026

SW-2, 16 APR 2026 to 14 MAY 2026