

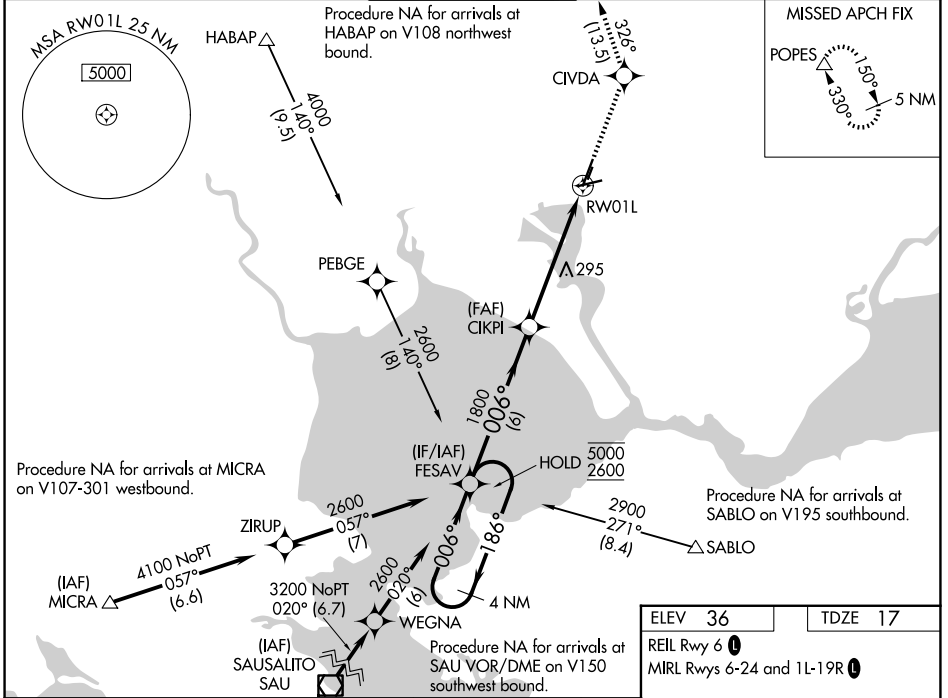
WAAS CH 56613 W01A	APP CRS 006°	Rwy Ldg 5930 TDZE 17 Apt Elev 36
--	------------------------	---

RNAV (GPS) Y RWY 1L

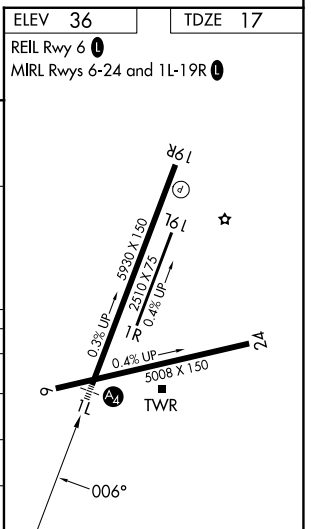
NAPA COUNTY (APC)

RNP APCH.	MALS	MISSED APPROACH: Climb to 5000 direct CIVDA and on track 326° to POPES and hold, continue climb-in-hold to 5000.
<p>▼ For uncompensated Baro-VNAV systems, LNAV/VNAV NA below -4°C or above 54°C. Circling Cats A/B/C NA northeast or Rwy 19R and 24. Circling Cat D NA east of Rwy 19L-1R. Inop table does not apply to LPV, LNAV/VNAV all Cats, and LNAV Cats C/D. Circling Rwy 6 NA at night.</p>		

ATIS 124.05	OAKLAND CENTER 127.8 353.5	NAPA TOWER* 118.7 (CTAF) 257.8	GND CON 121.7	UNICOM 122.95
-----------------------	--------------------------------------	--	-------------------------	-------------------------



4 NM Holding Pattern	FESAV		5000	CIVDA	tr	POPES
	5000 ← 186°	2600 → 006°	1800	326°		
GP 3.00° TCH 50	1800		*3.7 NM to RWY 01L	*LNAV only	RWY 01L	
	6 NM	1.8 NM	3.7 NM			
CATEGORY	A	B	C	D		
LPV DA		1252-5	1235 (1300-5)			
LNAV/VNAV DA		1051-4	1034 (1100-4)			
LNAV MDA	1260-1 1243 (1300-1)	1260-1¼ 1243 (1300-1¼)	1260-3 1243 (1300-3)			
CIRCLING	1260-1¼ 1224 (1300-1¼)	1260-1½ 1224 (1300-1½)	1280-3 1244 (1300-3)	1300-3 1264 (1300-3)		



SW-2, 16 APR 2026 to 14 MAY 2026

SW-2, 16 APR 2026 to 14 MAY 2026