

VORTAC	SGD	APP CRS	Rwy Ldg	5008
<b>112.1</b>		<b>050°</b>	TDZE	<b>21</b>
Chan <b>58</b>			Apt Elev	<b>36</b>

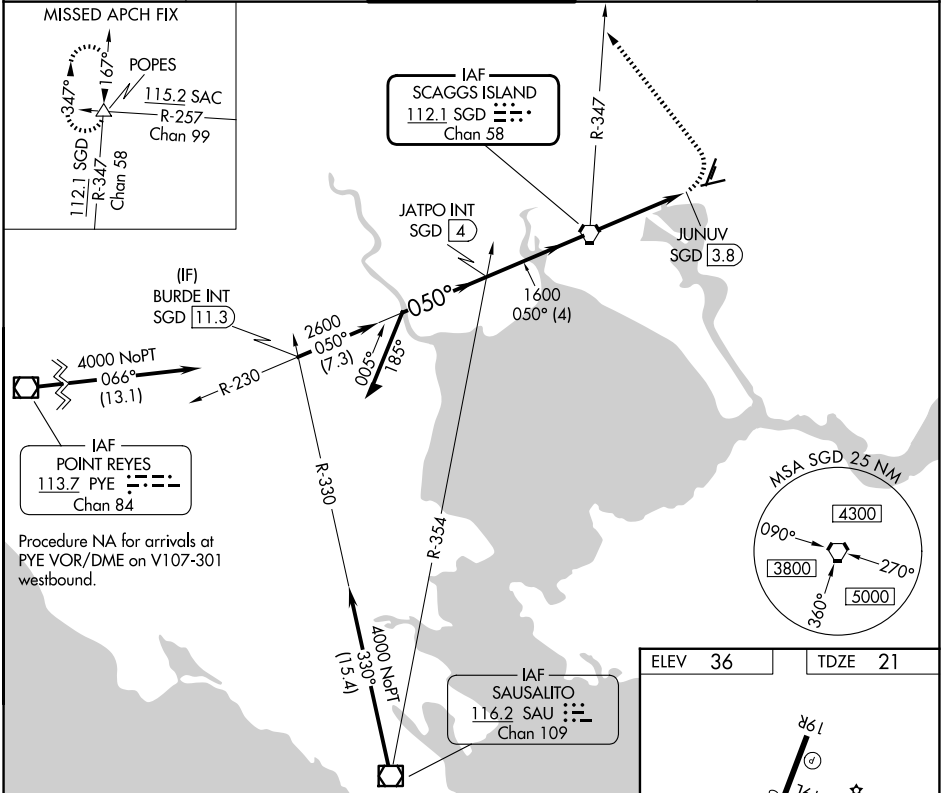
# VOR RWY 6

NAPA COUNTY (APC)

**⚠** Rwy 6 helicopter visibility reduction below 3/4 SM NA. Circling Cats A/B/C NA east of Rwy 19R and northwest of Rwy 24. Circling Cat D NA east of Rwy 19L-1R.

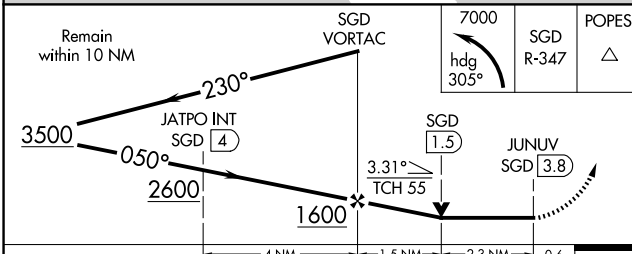
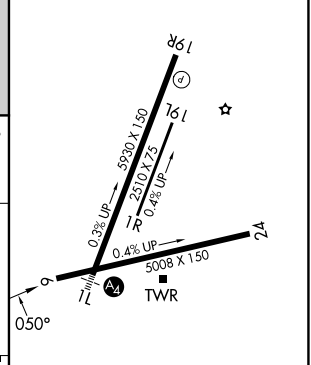
MISSED APPROACH: Climbing left turn to 7000 on heading 305° and SGD VORTAC R-347 to POPES INT and hold, continue climb-in-hold to 7000.

ATIS <b>124.05</b>	OAKLAND CENTER <b>127.8 353.5</b>	NAPA TOWER* <b>118.7</b> (CTAF) <b>257.8</b>	GND CON <b>121.7</b>	UNICOM <b>122.95</b>
-----------------------	--------------------------------------	---	-------------------------	-------------------------



Procedure NA for arrivals at PYE VOR/DME on V107-301 westbound.

ELEV	36	TDZE	21
------	----	------	----



CATEGORY	A	B	C	D
S-6	1080-1 1/4 1059 (1100-1 1/4)	1080-1 1/2 1059 (1100-1 1/2)	1080-3 1059 (1100-3)	
CIRCLING	1080-1 1/4 1044 (1100-1 1/4)	1080-1 1/2 1044 (1100-1 1/2)	1280-3 1244 (1300-3)	1300-3 1264 (1300-3)

REIL Rwy 6					
MIRL Rws 6-24 and 1L-19R					
FAF to MAP 3.8 NM					
Knots	60	90	120	150	180
Min:Sec	3:48	2:32	1:54	1:31	1:16

SW-2, 16 APR 2026 to 14 MAY 2026

SW-2, 16 APR 2026 to 14 MAY 2026