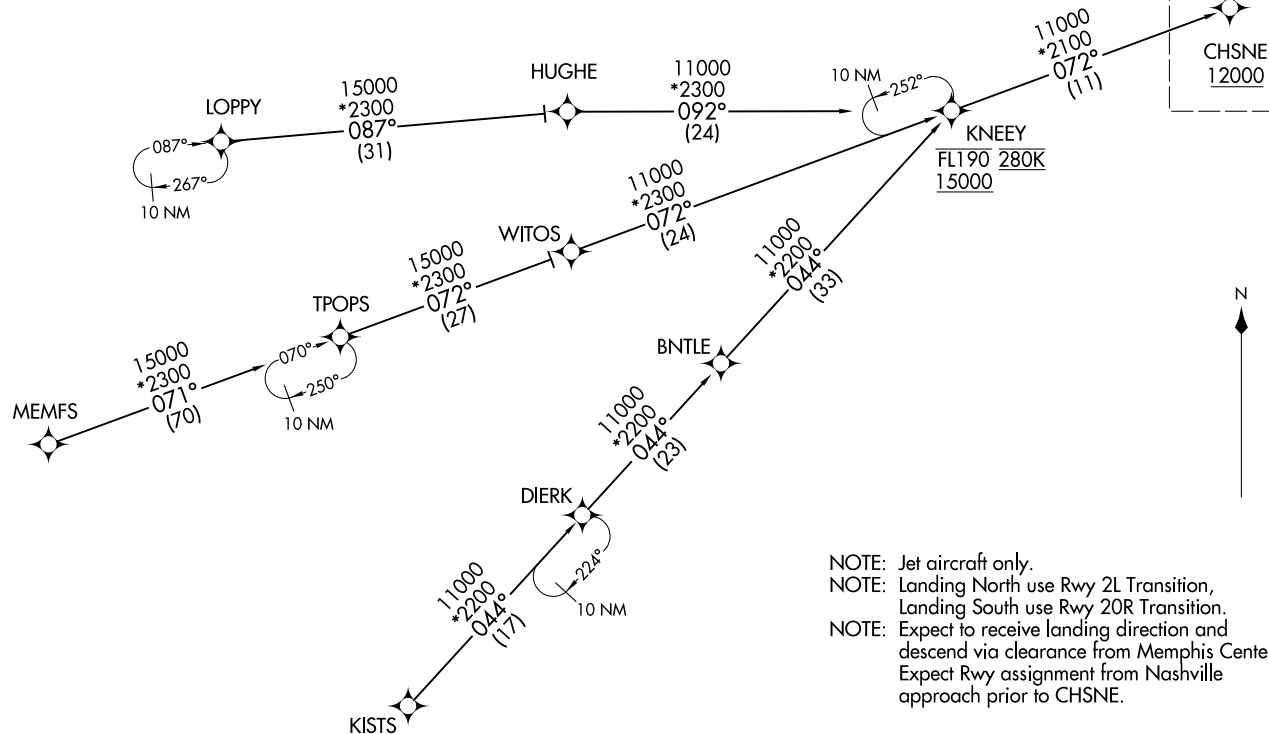


NASHVILLE APP CON  
119.35 372.0  
D-ATIS  
135.1

RNAV 1 - DME/DME/IRU or GPS.

RADAR required.

See following  
page for  
arrival routes



CHSNE THREE ARRIVAL (RNAV) Transition Routes  
(CHSNE:CHSNE3) 020CT75

NASHVILLE, TENNESSEE  
NASHVILLE INTL (BNA)

(CHSNE:CHSNE3) 25275  
CHSNE THREE ARRIVAL (RNAV) Transition Routes  
AL-282 (FAA)

NASHVILLE INTL (BNA)  
NASHVILLE, TENNESSEE

- NOTE: Jet aircraft only.
- NOTE: Landing North use Rwy 2L Transition, Landing South use Rwy 20R Transition.
- NOTE: Expect to receive landing direction and descend via clearance from Memphis Center. Expect Rwy assignment from Nashville approach prior to CHSNE.

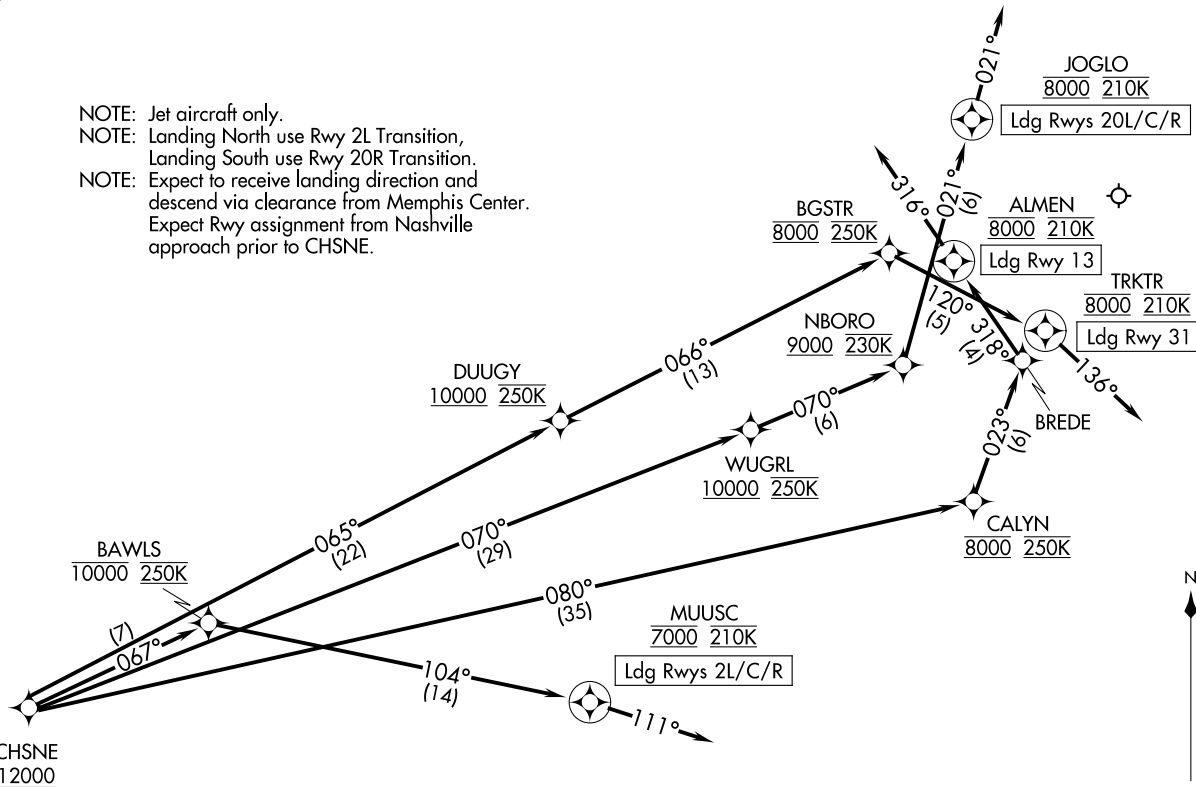
(CONTINUED ON FOLLOWING PAGE)

NOTE: Chart not to scale.

RNAV 1 - DME/DME/IRU or GPS.  
RADAR required.

NASHVILLE APP CON  
119.35 372.0  
D-ATIS  
135.1

NOTE: Jet aircraft only.  
NOTE: Landing North use Rwy 2L Transition,  
Landing South use Rwy 20R Transition.  
NOTE: Expect to receive landing direction and  
descend via clearance from Memphis Center.  
Expect Rwy assignment from Nashville  
approach prior to CHSNE.



(CONTINUED ON FOLLOWING PAGE)

NOTE: Chart not to scale.

CHSNE:CHSNE3) 020CT25

CHSNE THREE ARRIVAL (RNAV) Arrival Routes

NASHVILLE, TENNESSEE  
NASHVILLE INTL (RNA)

CHSNE:CHSNE3) 25275

AL-282 (FAA)  
Arrival Routes

NASHVILLE INTL (RNA)  
NASHVILLE, TENNESSEE

# CHSNE THREE ARRIVAL (RNAV)

## ARRIVAL ROUTE DESCRIPTION

KISTS TRANSITION (KISTS.CHSNE3)  
LOPPY TRANSITION (LOPPY.CHSNE3)  
MEMFS TRANSITION (MEMFS.CHSNE3)

LANDING RUNWAYS 2L/C/R: From CHSNE on track 067° to cross BAWLS at or below 10000 and at 250K, then on track 104° to cross MUUSC at 7000 and at 210K, then on track 111°. Expect RADAR vectors to final approach course.

LANDING RUNWAY 13: From CHSNE on track 080° to cross CALYN at 8000 and at 250K, then on track 023° to BREDE, then on track 318° to cross ALMEN at 8000 and at 210K, then on track 316°. Expect RADAR vectors to final approach course.

LANDING RUNWAYS 20L/C/R: From CHSNE on track 070° to cross WUGRL at or above 10000 and at 250K, then on track 070° to cross NBORO at or above 9000 and at 230K, then on track 021° to cross JOGLO at 8000 and at 210K, then on track 021°. Expect RADAR vectors to final approach course.

LANDING RUNWAY 31: From CHSNE on track 065° to cross DUUGY at or above 10000 and at 250K, then on track 066° to cross BGSTR at 8000 and at 250K, then on track 120° to cross TRKTR at 8000 and at 210K, then on track 136°. Expect RADAR vectors to final approach course.

SE-1, 16 APR 2026 to 14 MAY 2026

SE-1, 16 APR 2026 to 14 MAY 2026