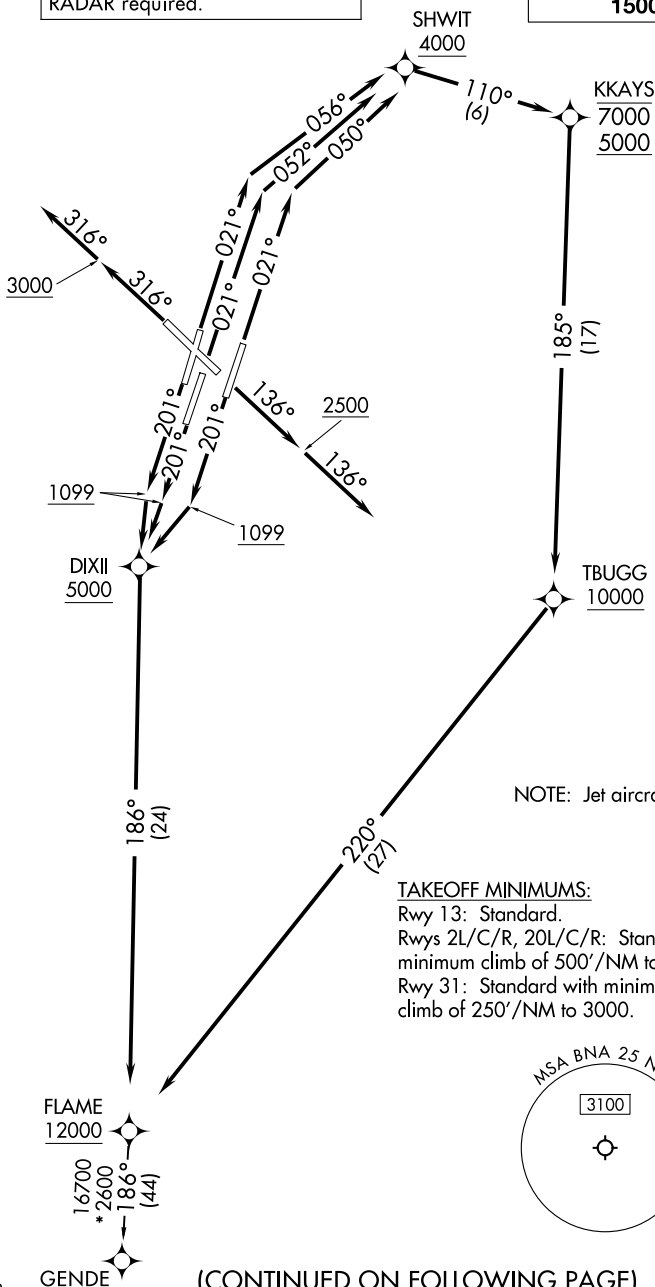


FLAME FOUR DEPARTURE (RNAV)

NASHVILLE DEP CON
118.4 360.7
D-ATIS 135.1
CLNC DEL 126.05
CPDLC
GND CON
121.9 348.6
NASHVILLE TOWER
118.6 257.8

RNAV 1 - DME/DME/IRU or GPS.
RADAR required.

TOP ALTITUDE:
15000



NOTE: Jet aircraft only.

TAKEOFF MINIMUMS:
Rwy 13: Standard.
Rwys 2L/C/R, 20L/C/R: Standard with minimum climb of 500'/NM to 1099.
Rwy 31: Standard with minimum climb of 250'/NM to 3000.

NOTE: Chart not to scale.

(CONTINUED ON FOLLOWING PAGE)

SE-1, 16 APR 2026 to 14 MAY 2026

SE-1, 16 APR 2026 to 14 MAY 2026

FLAME FOUR DEPARTURE (RNAV)



DEPARTURE ROUTE DESCRIPTION

TAKEOFF RUNWAY 2L: Climb on heading 021° to intercept course 056° to cross SHWIT at or above 4000, then on track 110° to cross KKAYS between 5000 and 7000, then on track 185° to cross TBUGG at or above 10000, then on track 220° to cross FLAME at or above 12000, thence. . . .

TAKEOFF RUNWAY 2C: Climb on heading 021° to intercept course 052° to cross SHWIT at or above 4000, then on track 110° to cross KKAYS between 5000 and 7000, then on track 185° to cross TBUGG at or above 10000, then on track 220° to cross FLAME at or above 12000, thence. . . .

TAKEOFF RUNWAY 2R: Climb on heading 021° to intercept course 050° to cross SHWIT at or above 4000, then on track 110° to cross KKAYS between 5000 and 7000, then on track 185° to cross TBUGG at or above 10000, then on track 220° to cross FLAME at or above 12000, thence. . . .

TAKEOFF RUNWAY 13: Climb on heading 136° to 2500, then on heading 136° or as assigned by ATC for RADAR vectors to cross FLAME at or above 12000, thence. . . .

TAKEOFF RUNWAYS 20L/C/R: Climb on heading 201° to 1099, then direct DIXII at or above 5000, then on track 186° to cross FLAME at or above 12000, thence. . . .

TAKEOFF RUNWAY 31: Climb on heading 316° to 3000, then on heading 316° or as assigned by ATC for RADAR vectors to cross FLAME at or above 12000, thence. . . .

. . . .on transition. Maintain 15000, expect filed altitude 10 minutes after departure.

GENDE TRANSITION (FLAME4.GENDE)

SE-1, 16 APR 2026 to 14 MAY 2026

SE-1, 16 APR 2026 to 14 MAY 2026