

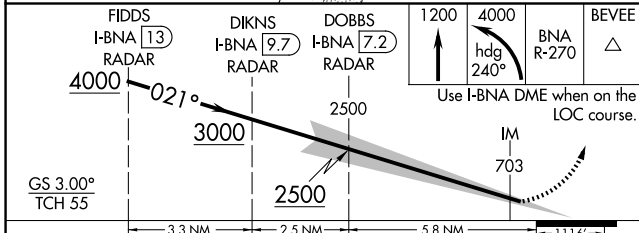
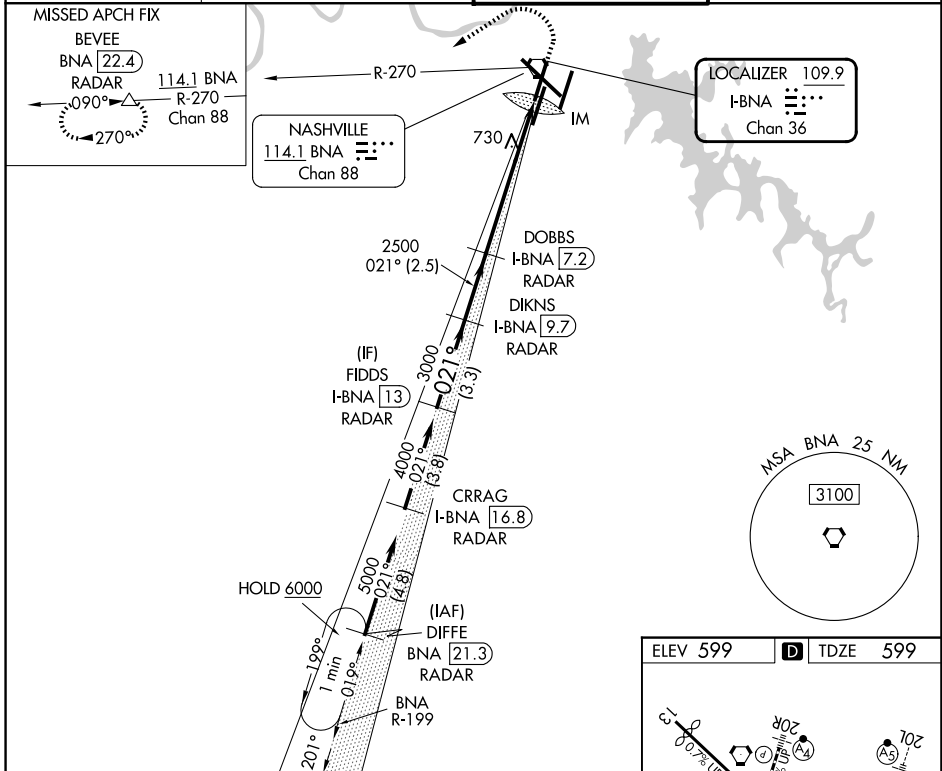
LOC/DME I-BNA 109.9 Chan 36	APP CRS 021°	Rwy Ldg 7702 TDZE 599 Apt Elev 599
--	------------------------	---

ILS RWY 2L (CAT II & III)

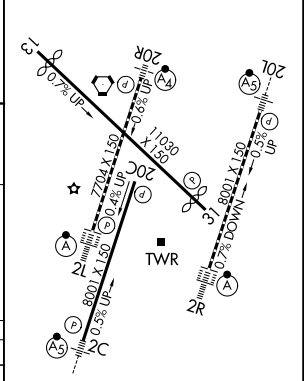
NASHVILLE INTL (BNA)

DME or RADAR required. RADAR required for procedure entry.	ALSF-2	MISSED APPROACH: Climb to 1200 then climbing left turn to 4000 on heading 240° and on BNA VORTAC R-270 to BEVEE/BNA VORTAC 22.4 DME/RADAR and hold.
Simultaneous approach authorized. Cat II: RVR 1000 Authorized with specific OPSPEC, MSPEC, or LOA approval and use of autoland or HUD to touchdown.		

D-ATIS 135.1	NASHVILLE APP CON 118.4 360.7 (030°-196°) 119.35 372.0 (197°-029°)	NASHVILLE TOWER 118.6 257.8	GND CON 121.9 348.6
------------------------	--	---------------------------------------	-------------------------------



ELEV 599	TDZE 599
----------	----------



CATEGORY	A	B	C	D
S-ILS 2L	CAT II RA 105/12 100 DA 699			
S-ILS 2L	CAT III RVR 600			

CATEGORY II & III ILS - SPECIAL AIRCREW & AIRCRAFT CERTIFICATION REQUIRED

HIRL all Rwy's
TDZL/RCLS Rwy's 2L and 2R
REIL Rwy's 13, 20C and 31

SE-1, 16 APR 2026 to 14 MAY 2026

SE-1, 16 APR 2026 to 14 MAY 2026