

LOC I-VIY <b>111.3</b>	APP CRS <b>201°</b>	Rwy Ldg <b>7702 8001</b>	20R 20C
		TDZE <b>578 588</b>	
		Apt Elev <b>599 599</b>	

# ILS or LOC RWY 20R

NASHVILLE INTL (BNA)

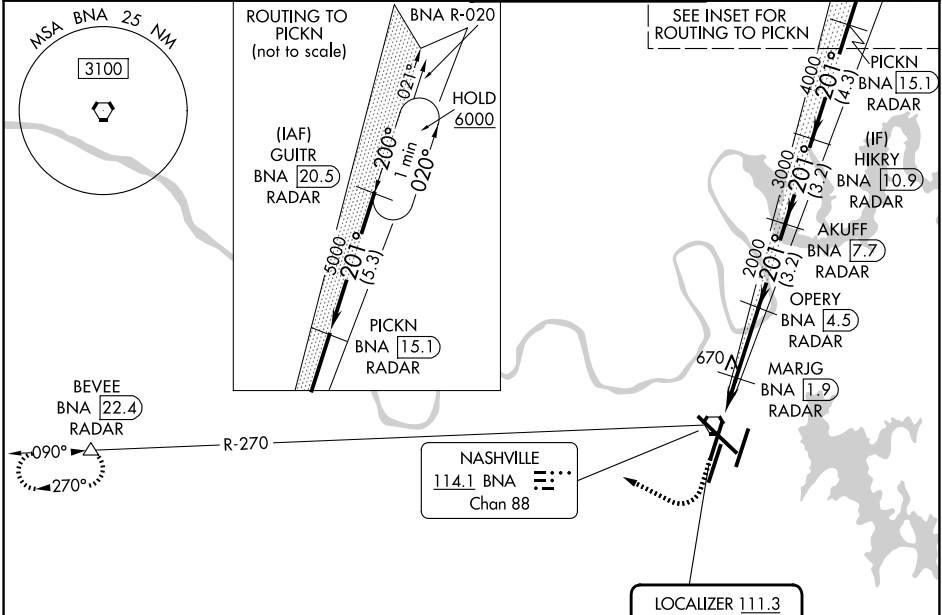
DME or RADAR required. RADAR required for procedure entry.

MAJLF

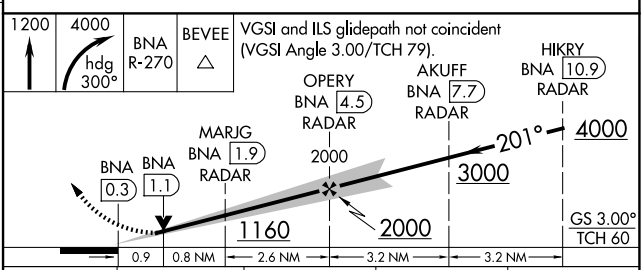
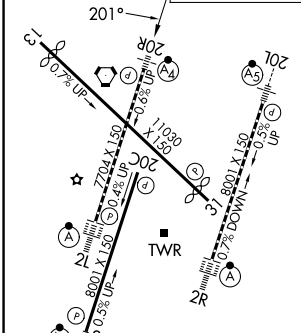
MISSED APPROACH: Climb to 1200 then climbing right turn to 4000 on heading 300° and on BNA VORTAC R-270 to BEVEE/BNA 22.4 DME/RADAR and hold.

**⚠** Simultaneous approach authorized. Inop table does not apply to S-ILS  
**⚠** 20R all Cats. DME from BNA VORTAC. DME use requires simultaneous reception of I-VIY and BNA DME.

D-ATIS <b>135.1</b>	NASHVILLE APP CON <b>118.4 360.7</b> (030°-196°) <b>119.35 372.0</b> (197°-029°)	NASHVILLE TOWER <b>118.6 257.8</b>	GND CON <b>121.9 348.6</b>
------------------------	--	---------------------------------------	-------------------------------



ELEV 599	<b>D</b>	TDZE 20R 578	TDZE 20C 588
----------	----------	--------------	--------------



CATEGORY	A	B	C	D
S-ILS 20R		778/40	200 (200-¾)	
S-LOC 20R		920/40	342 (400-¾)	
SIDESTEP 20C	960-1	372 (400-1)	960-1½ 372 (400-1½)	960-2 372 (400-2)
CIRCLING	1100-1 501 (600-1)	1120-1 521 (600-1)	1200-1¾ 601 (700-1¾)	1380-2½ 781 (800-2½)

SE-1, 16 APR 2026 to 14 MAY 2026

SE-1, 16 APR 2026 to 14 MAY 2026