

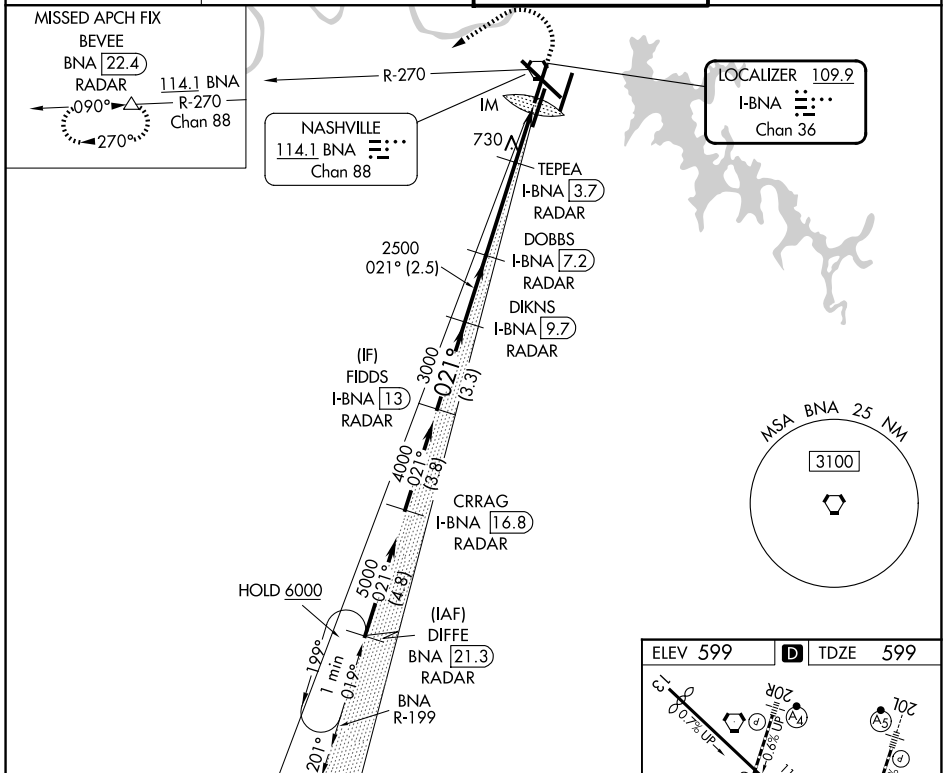
LOC/DME I-BNA 109.9 Chan 36	APP CRS 021°	Rwy Ldg 7702 TDZE 599 Apt Elev 599
---	------------------------	---

ILS or LOC RWY 2L

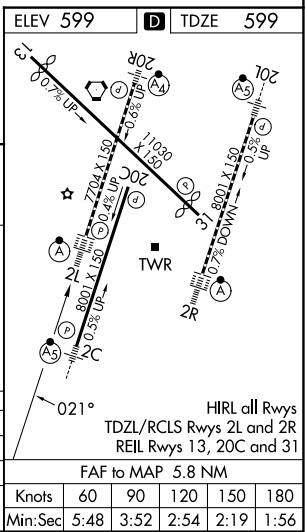
NASHVILLE INTL (BNA)

DME or RADAR required. RADAR required for procedure entry.		ALSF-2	MISSED APPROACH: Climb to 1200 then climbing left turn to 4000 on heading 240° and on BNA VORTAC R-270 to BEVEE/BNA VORTAC 22.4 DME/RADAR and hold.
Simultaneous approach authorized.		(A)	

D-ATIS 135.1	NASHVILLE APP CON 118.4 360.7 (030°-196°) 119.35 372.0 (197°-029°)	NASHVILLE TOWER 118.6 257.8	GND CON 121.9 348.6
------------------------	--	---------------------------------------	-------------------------------



	FIDDS I-BNA 13 RADAR	DIKNS I-BNA 9.7 RADAR	DOBBS I-BNA 7.2 RADAR	TEPEA I-BNA 3.7 RADAR	BNA R-270	BEVEE
	4000	3000	2500	2500	1380	IM
	GS 3.00°	021°	021°	021°	021°	TCH 55
	3.3 NM	2.5 NM	3.5 NM	1.3 NM	0.8	0.2
CATEGORY	A	B	C	D		
S-ILS 2L	799/18 200 (200-½)					
S-LOC 2L	980/24	381 (400-½)	980/35	381 (400-¾)	Use I-BNA DME when on the LOC course.	
CIRCLING	1100-1 501 (600-1)	1120-1 521 (600-1)	1200-1¼ 601 (700-1¾)	1380-2½ 781 (800-2½)		



SE-1, 16 APR 2026 to 14 MAY 2026

SE-1, 16 APR 2026 to 14 MAY 2026

ELEV 599	TDZE 599
Knots	60 90 120 150 180
Min:Sec	5:48 3:52 2:54 2:19 1:56