


# RNAV (RNP) Z RWY 20L

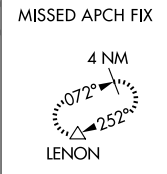
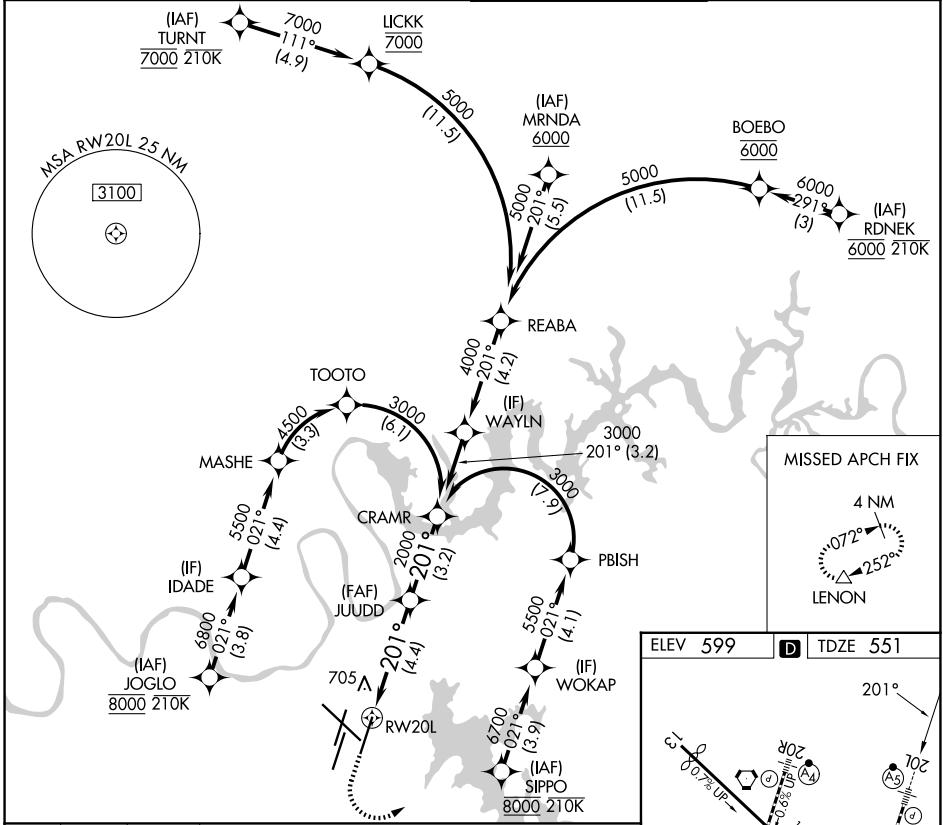
NASHVILLE INTL (BNA)

APP CRS	Rwy Ldg	<b>8000</b>
<b>201°</b>	TDZE	<b>551</b>
	Apt Elev	<b>599</b>

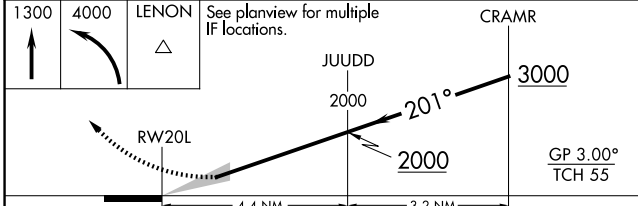
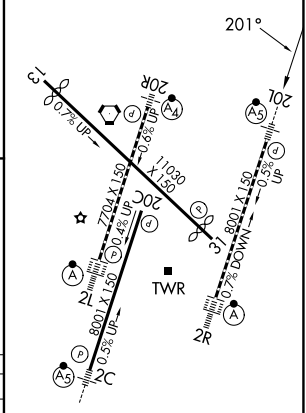
RNP AR APCH - GPS. Authorization required. From RDNEK, TURNT, JOGLO, or SIPPO: RF.  
 ▼ For uncompensated Baro-VNAV systems, procedure NA below -10°C or above 54°C.  
 Simultaneous approach authorized with Rwy 20R. For inop ALS, increase RNP 0.15 all Cats visibility to RVR 4000.

MALSR  
  
 MISSED APPROACH: Climb to 1300 then climbing left turn to 4000 direct LENON and hold.

D-ATIS <b>135.1</b>	NASHVILLE APP CON <b>118.4 360.7</b> (030°-196°) <b>119.35 372.0</b> (197°-029°)	NASHVILLE TOWER <b>118.6 257.8</b>	GND CON <b>121.9 348.6</b>
------------------------	--	---------------------------------------	-------------------------------



ELEV 599	<b>D</b> TDZE 551
----------	-------------------



CATEGORY	A	B	C	D
RNP 0.15 DA		801/24	250 (300-½)	
RNP 0.30 DA		975/40	424 (400-¾)	

## AUTHORIZATION REQUIRED

HIRL all Rwys  
 TDZL/RCLS Rwys 2L and 2R  
 REIL Rwys 13, 20C, and 31

SE-1, 16 APR 2026 to 14 MAY 2026

SE-1, 16 APR 2026 to 14 MAY 2026