

APP CRS	Rwy Ldg	7601
021°	TDZE	587
	Apt Elev	599

RNAV (RNP) Z RWY 2C

NASHVILLE INTL (BNA)

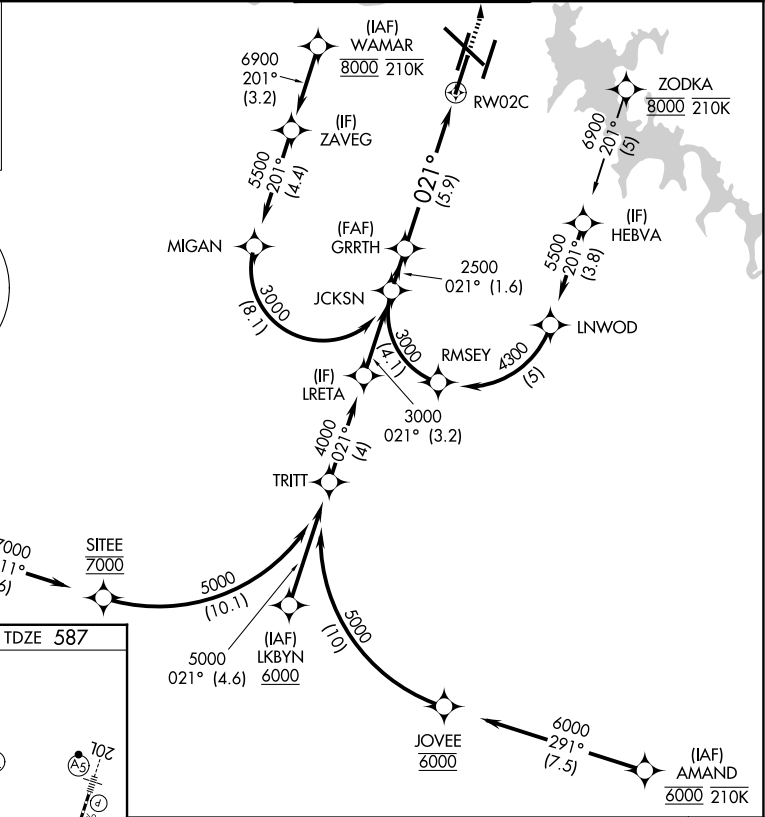
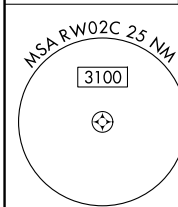
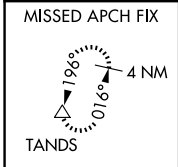
RNP APCH - GPS. Authorization required. From SITEE, JOVEE, LNWOD, RMSEY or MIGAN: RF.

▼ For uncompensated Baro-VNAV systems, procedure NA below -10°C or above 54°C. Simultaneous approach authorized. For inop ALS, increase RNP 0.15 all Cats visibility to RVR 4500, increase RNP 0.30 all Cats visibility to 1½ SM.

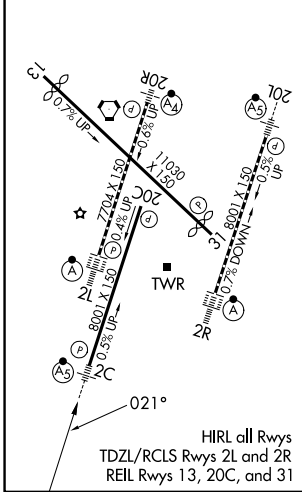
MALSR

MISSED APPROACH: Climb to 1300 then climbing left turn to 4000 direct TANDS and hold.

D-ATIS	NASHVILLE APP CON	NASHVILLE TOWER	GND CON
135.1	118.4 360.7 (030°-196°) 119.35 372.0 (197°-029°)	118.6 257.8	121.9 348.6



ELEV 599	D	TDZE 587
----------	----------	----------



See planview for multiple IF locations.

CATEGORY	A	B	C	D
RNP 0.15 DA		852/24	265 (300-½)	
RNP 0.30 DA		1018/50	431 (500-1)	

AUTHORIZATION REQUIRED

SE-1, 16 APR 2026 to 14 MAY 2026

SE-1, 16 APR 2026 to 14 MAY 2026