


APP CRS	Rwy Ldg	8000
021°	TDZE	590
	Apt Elev	599

RNAV (RNP) Z RWY 2R

NASHVILLE INTL (BNA)

RNP AR APCH - GPS. Authorization required. From WAMAR, ZODKA, MUUSC, or AMAND: RF

ALSF-2

 MISSED APPROACH:
 Climb to 1300 then
 climbing right turn to
 4000 direct LENON
 and hold.

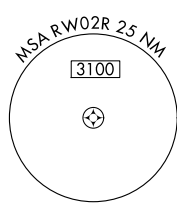
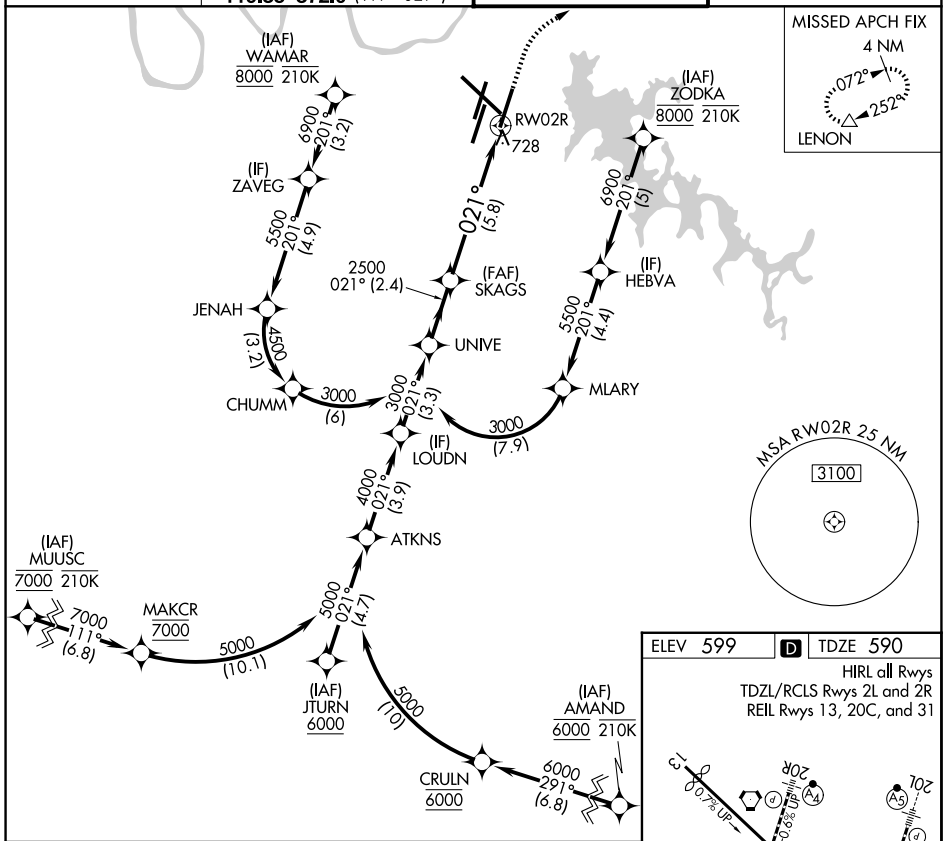
▼ For uncompensated Baro-VNAV systems, procedure NA below -10°C or above 54°C.
 Simultaneous approach authorized with Rwy 2L/C. For inop ALS, increase RNP 0.15
 all Cats visibility to RVR 5500 and RNP 0.3 all Cats visibility to 6000.

D-ATIS
135.1

NASHVILLE APP CON
118.4 360.7 (030°-196°)
119.35 372.0 (197°-029°)

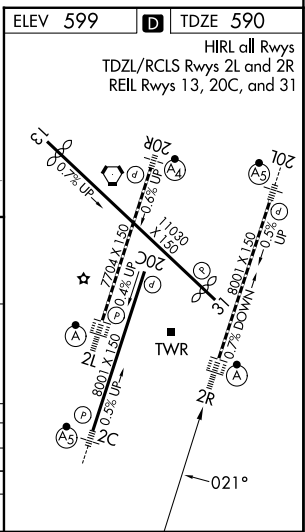
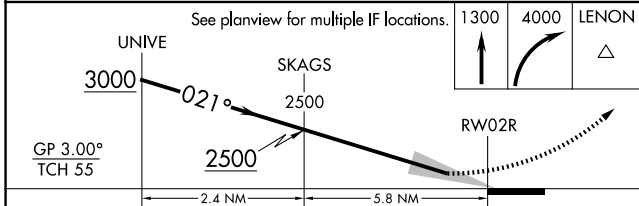
NASHVILLE TOWER
118.6 257.8

GND CON
121.9 348.6



SE-1, 16 APR 2026 to 14 MAY 2026

SE-1, 16 APR 2026 to 14 MAY 2026



CATEGORY	A	B	C	D
RNP 0.15 DA		938/30	348 (400- ⁵ / ₈)	
RNP 0.30 DA		994/40	404 (400- ³ / ₄)	

AUTHORIZATION REQUIRED