

APP CRS	Rwy Ldg	<b>9487</b>
<b>316°</b>	TDZE	<b>578</b>
	Apt Elev	<b>599</b>

# RNAV (RNP) Z RWY 31

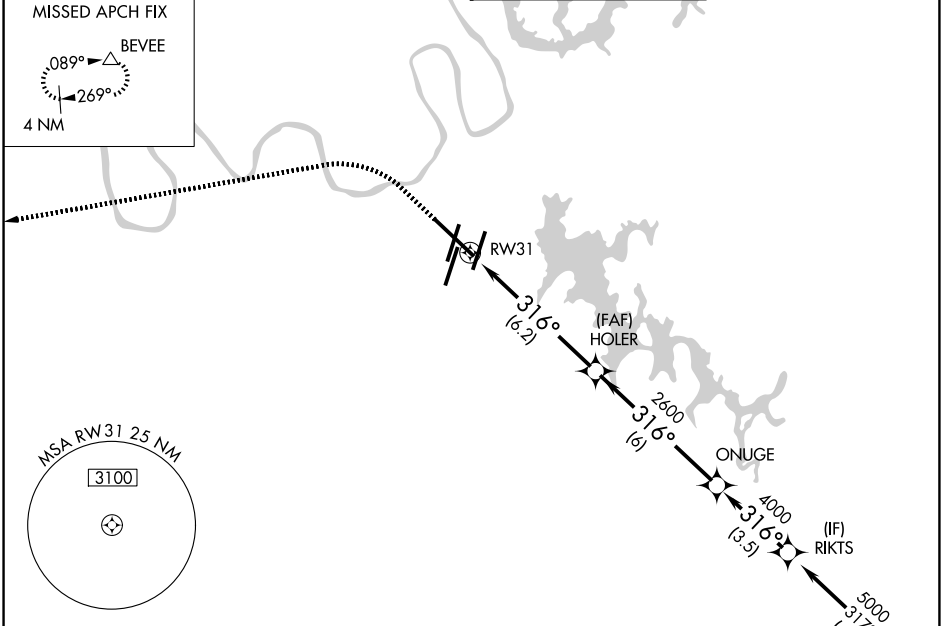
NASHVILLE INTL (BNA)

RNP AR APCH - GPS. Authorization required.

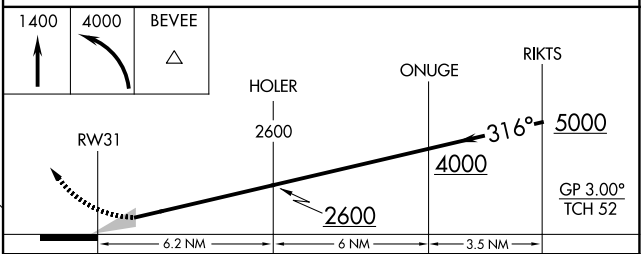
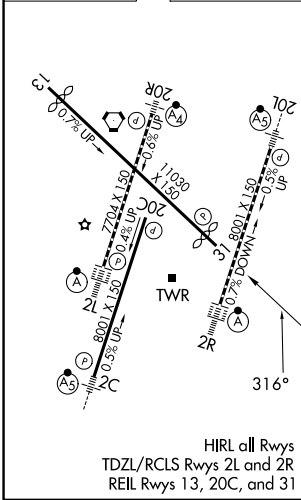
▼ For uncompensated Baro-VNAV systems, procedure NA below -10°C or above 54°C.

MISSED APPROACH: Climb to 1400 then climbing left turn to 4000 direct BEVEE and hold.

D-ATIS <b>135.1</b>	NASHVILLE APP CON <b>118.4 360.7</b> (030°-196°) <b>119.35 372.0</b> (197°-029°)	NASHVILLE TOWER <b>118.6 257.8</b>	GND CON <b>121.9 348.6</b>
------------------------	--	---------------------------------------	-------------------------------



ELEV 599	<b>D</b>	TDZE 578
----------	----------	----------



CATEGORY	A	B	C	D
RNP 0.15 DA		914-1	336 (400-1)	
RNP 0.30 DA		1045-1 <sup>3</sup> / <sub>8</sub>	467 (500-1 <sup>3</sup> / <sub>8</sub> )	

**AUTHORIZATION REQUIRED**

SE-1, 16 APR 2026 to 14 MAY 2026

SE-1, 16 APR 2026 to 14 MAY 2026