

WAAS CH 49013 W20D	APP CRS 201°	Rwy Ldg TDZE 551 Apt Elev 599
--	------------------------	---

RNAV (GPS) Y RWY 20L

NASHVILLE INTL (BNA)

RNP APCH - GPS.

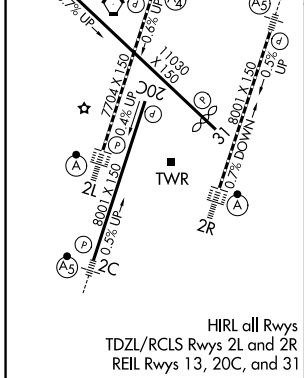
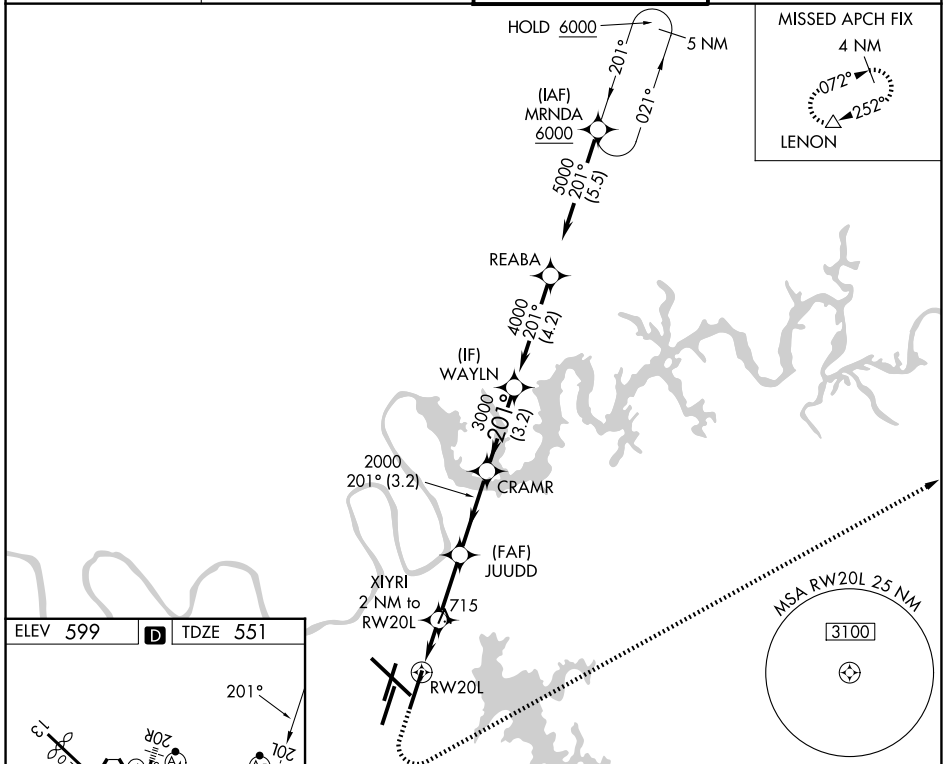
▽ For uncompensated Baro-VNAV systems, LNAV/VNAV NA below -10°C or above 54°C.
▲ Simultaneous approach authorized. Use of FD or AP required during simultaneous operations. LNAV procedure NA during simultaneous operations.
 *RVR 1800 authorized with use of FD or AP or HUD to DA.

MALSR



MISSED APPROACH:
 Climb to 1300, then climbing left turn to 4000 direct LENON and hold.

D-ATIS 135.1	NASHVILLE APP CON 118.4 360.7 (030°-196°) 119.35 372.0 (197°-029°)	NASHVILLE TOWER 118.6 257.8	GND CON 121.9 348.6
------------------------	--	---------------------------------------	-------------------------------



ELEV 599	D	TDZE 551		
1300	4000	LENON		
		WAYLN		
		4000		
		3000		
		2000		
		1220		
		2000		
		3000		
		4000		
		GP 3.00° TCH 55		
CATEGORY	A	B	C	D
LPV DA*	751/24 200 (200-½)			
LNAV/ VNAV DA	879/26 328 (300-½)			
LNAV MDA	980/24	429 (400-½)	980/40	429 (400-¾)
CIRCLING	1100-1 501 (600-1)	1120-1 521 (600-1)	1200-1¾ 601 (700-1¾)	1380-2½ 781 (800-2½)

SE-1, 16 APR 2026 to 14 MAY 2026

SE-1, 16 APR 2026 to 14 MAY 2026