

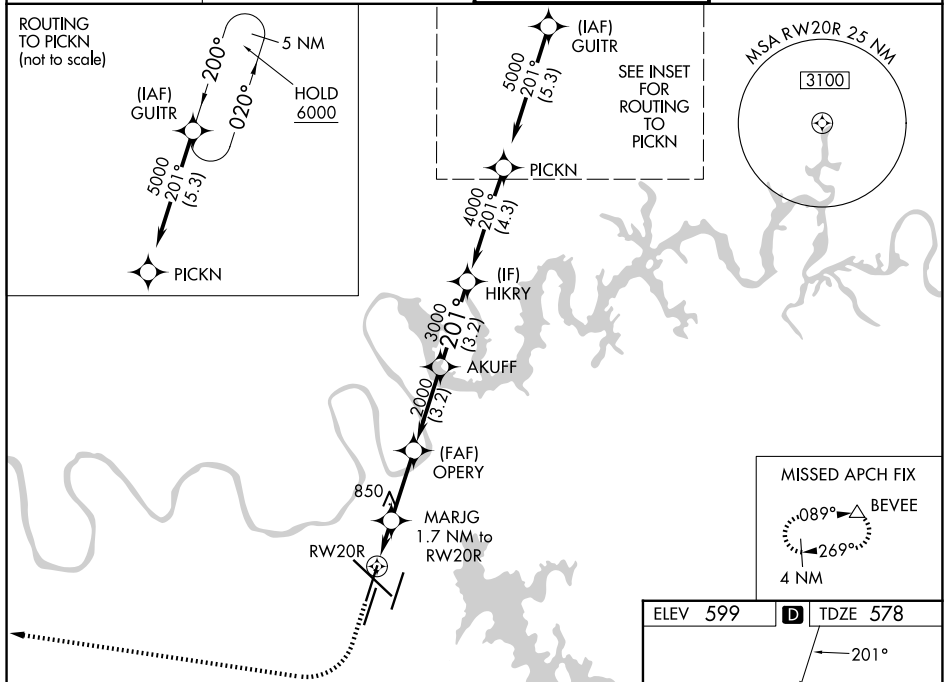
WAAS CH 78411 W20A	APP CRS 201°	Rwy Ldg TDZE Apt Elev	7702 578 599
--	------------------------	-----------------------------	---

RNAV (GPS) Y RWY 20R

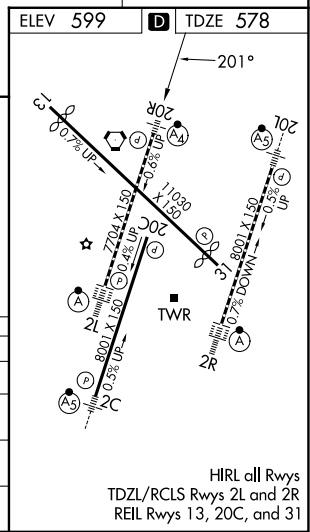
NASHVILLE INTL (BNA)

RNP APCH - GPS.		MALSF 	MISSED APPROACH: Climb to 1200 then climbing right turn to 4000 direct BEVEE and hold.
<p>▼ LNAV procedure NA during simultaneous operations. For uncompensated Baro-VNAV systems, LNAV/VNAV NA below -10°C or above 54°C. Simultaneous approach authorized. Use of FD or AP required during simultaneous operations. Inop table does not apply to LPV all Cats.</p> <p>▲ For inop ALS, increase LNAV/VNAV all Cats visibility to RVR 4500 and LNAV Cats C and D visibility to RVR 6000.</p>			

D-ATIS 135.1	NASHVILLE APP CON 118.4 360.7 (030°-196°) 119.35 372.0 (197°-029°)	NASHVILLE TOWER 118.6 257.8	GND CON 121.9 348.6
------------------------	--	---------------------------------------	-------------------------------



1200	4000	BEVEE	VGSI and RNAV glidepath not coincident (VGSI Angle 3.00/TCH 79).			
			<p>OPERY 2000</p> <p>AKUFF 3000</p> <p>HIKRY 4000</p> <p>GP 3.00° TCH 60</p>			
<p>MARJG 1.7 NM to RWY 20R</p> <p>RWY 20R 1160</p> <p>OPERY 2000</p> <p>AKUFF 3000</p> <p>HIKRY 4000</p>			<p>1.7 NM</p> <p>2.6 NM</p> <p>3.2 NM</p> <p>3.2 NM</p>			
CATEGORY	A	B	C	D		
LPV DA	778/40		200 (200-¾)			
LNAV/VNAV DA	880/40		302 (300-¾)			
LNAV MDA	980/40		402 (400-¾)		980/50 402 (400-1)	
CIRCLING	1100-1 501 (600-1)		1120-1 521 (600-1)		1200-1¾ 601 (700-1¾)	
					1380-2½ 781 (800-2½)	



SE-1, 16 APR 2026 to 14 MAY 2026

SE-1, 16 APR 2026 to 14 MAY 2026