

WAAS CH 42713 W02A	APP CRS 021°	Rwy Ldg TDZE Apt Elev	7702 599 599
--	------------------------	-----------------------------	---

RNAV (GPS) Y RWY 2L

NASHVILLE INTL (BNA)

RNP APCH - GPS.

⚠ LNAV procedure NA during simultaneous operations. For uncompensated Baro-VNAV systems, LNAV/VNAV NA below -10°C or above 54°C. Simultaneous approach authorized. Use of FD or AP required during simultaneous operations. For inop ALS, increase LNAV/VNAV all Cats visibility to RVR 5500.

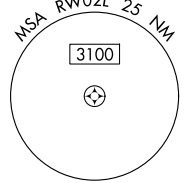
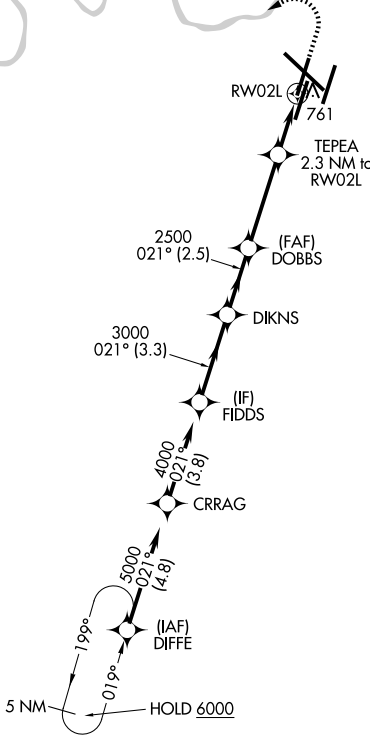
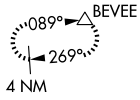
ALSF-2



MISSED APPROACH: Climb to 1100 then climbing left turn to 4000 direct BEVEE and hold.

D-ATIS 135.1	NASHVILLE APP CON 118.4 360.7 (030°-196°) 119.35 372.0 (197°-029°)	NASHVILLE TOWER 118.6 257.8	GND CON 121.9 348.6
------------------------	--	---------------------------------------	-------------------------------

MISSED APCH FIX



ELEV 599 **D** TDZE 599

FIDDS	DIKNS	DOBBS	TEPEA 2.3 NM to RW02L	1100	4000	BEVEE
4000	3000	2500	1380	1.2 NM to RW02L		△
GP 3.00° TCH 55	3.3 NM	2.5 NM	3.5 NM	1.2 NM	1.2 NM	
CATEGORY	A		B		C	
LPV DA	799/18		200 (200-½)			
LNAV/VNAV DA	949/30		350 (400-⅙)			
LNAV MDA	1020/24 421 (500-½)		1020/40 421 (500-¾)			
CIRCLING	1100-1 501 (600-1)		1120-1 521 (600-1)		1200-1¾ 601 (700-1¾)	
					1380-2½ 781 (800-2½)	

