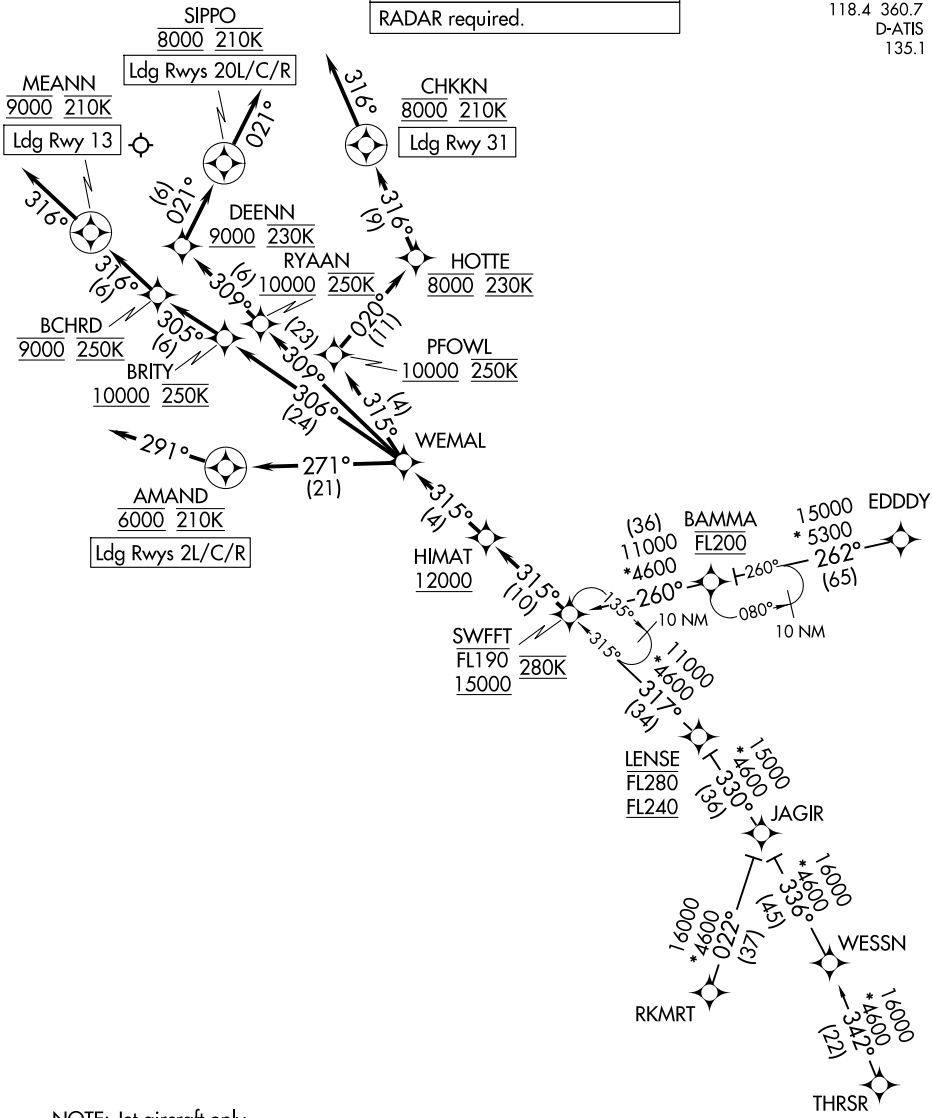


SWFFT THREE ARRIVAL (RNAV)

RNAV 1 - DME/DME/IRU or GPS.
RADAR required.

NASHVILLE APP CON
118.4 360.7
D-ATIS
135.1



- NOTE: Jet aircraft only.
- NOTE: JAGIR TRANSITION for use by Atlanta area departures only.
- NOTE: Landing north use Rwy 2R Transition, landing south use Rwy 20L Transition.
- NOTE: Expect to receive landing direction and descend via clearance from Memphis Center.
Expect Rwy assignment from Nashville Approach.

NOTE: Chart not to scale.

(CONTINUED ON FOLLOWING PAGE)

SE-1, 16 APR 2026 to 14 MAY 2026

SE-1, 16 APR 2026 to 14 MAY 2026

SWFFT THREE ARRIVAL (RNAV)

ARRIVAL ROUTE DESCRIPTION

EDDDY TRANSITION (EDDDY.SWFFT3)

JAGIR TRANSITION (JAGIR.SWFFT3)

RKMRT TRANSITION (RKMRT.SWFFT3)

THRSR TRANSITION (THRSR.SWFFT3)

From SWFFT on track 315° to cross HIMAT at or above 12000, then on track 315° to WEMAL.

LANDING RUNWAYS 2L/C/R: From WEMAL on track 271° to cross AMAND at 6000 and at 210K, then on track 291°. Expect RADAR vectors to final approach course.

LANDING RUNWAY 13: From WEMAL on track 306° to cross BRITY at or above 10000 and at 250K, then on track 305° to cross BCHR D at 9000 and at 250K, then on track 316° to cross MEANN at 9000 and at 210K, then on track 316°. Expect RADAR vectors to final approach course.

LANDING RUNWAYS 20L/C/R: From WEMAL on track 309° to cross RYAAN at or above 10000 and at 250K, then on track 309° to cross DEENN at or above 9000 and at 230K, then on track 021° to cross SIPPO at 8000 and at 210K, then on track 021°. Expect RADAR vectors to final approach course.

LANDING RUNWAY 31: From WEMAL on track 315° to cross PFOWL at or above 10000 and at 250K, then on track 020° to cross HOTTE at 8000 and at 230K, then on track 316° to cross CHKKN at 8000 and at 210K, then on track 316°. Expect RADAR vectors to final approach course.

SE-1, 16 APR 2026 to 14 MAY 2026

SE-1, 16 APR 2026 to 14 MAY 2026