

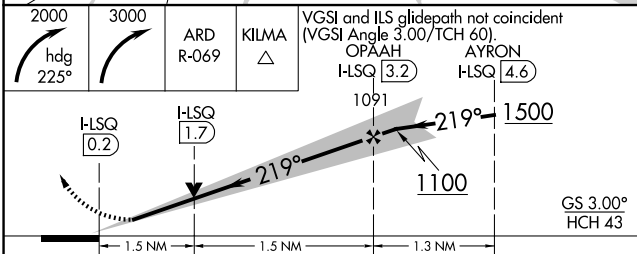
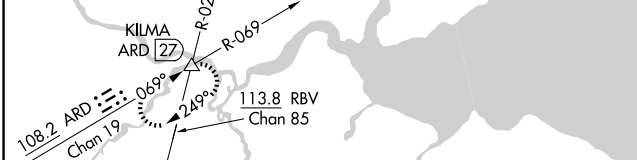
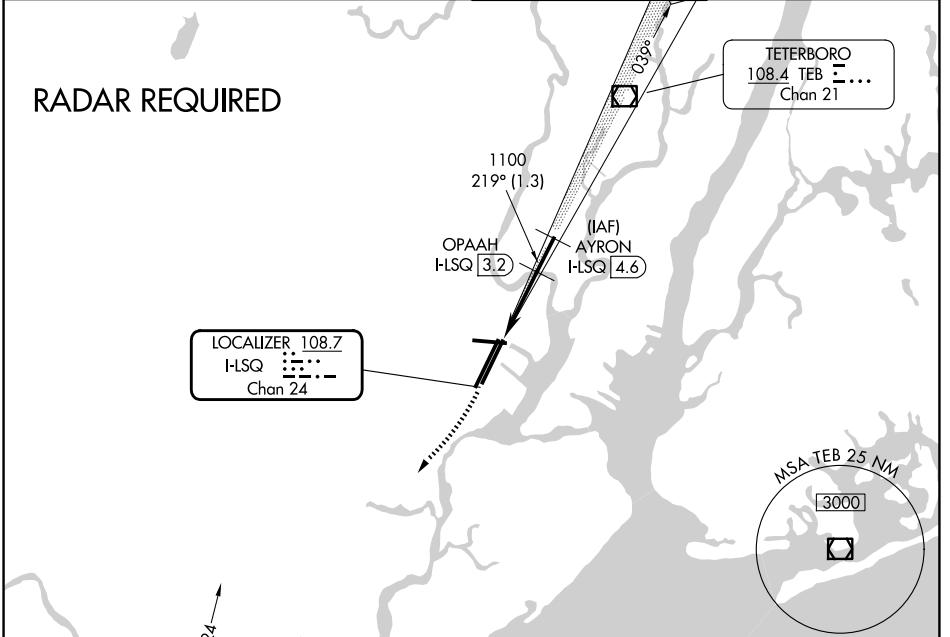
LOC/DME I-LSQ <b>108.7</b> Chan <b>24</b>	APP CRS <b>219°</b>	Rwy Ldg <b>8205</b> TDZE <b>11</b> Apt Elev <b>18</b>
---	------------------------	---

# COPTER ILS/DME RWY 22L

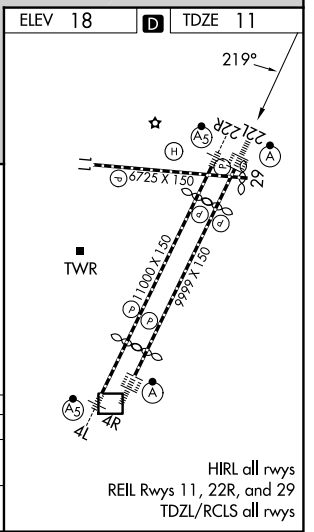
NEWARK LIBERTY INTL (EWR)

ALSF-2	MISSED APPROACH: Climbing right turn to 2000 heading 225° then climbing right turn to 3000 via ARD R-069 to KILMA INT and hold.		
--------	---	--	--

D-ATIS <b>115.7 134.825</b>	NEWARK APP CON <b>128.55 379.9</b>	NEWARK TOWER <b>118.3 257.6</b>	GND CON <b>121.8</b>
--------------------------------	---------------------------------------	------------------------------------	-------------------------



CATEGORY	COPTER	
H-ILS 22L	211/12	200 (200-¼)
H-LOC 22L	560/12	549 (600-¼)



NE-2, 16 APR 2026 to 14 MAY 2026

NE-2, 16 APR 2026 to 14 MAY 2026