

LOC/DME I-EWR 110.75 Chan 44(Y)	APP CRS 039°	Rwy Ldg 8459 TDZE 10 Apt Elev 17
---	------------------------	---

COPTER ILS Y or LOC Y RWY 4L

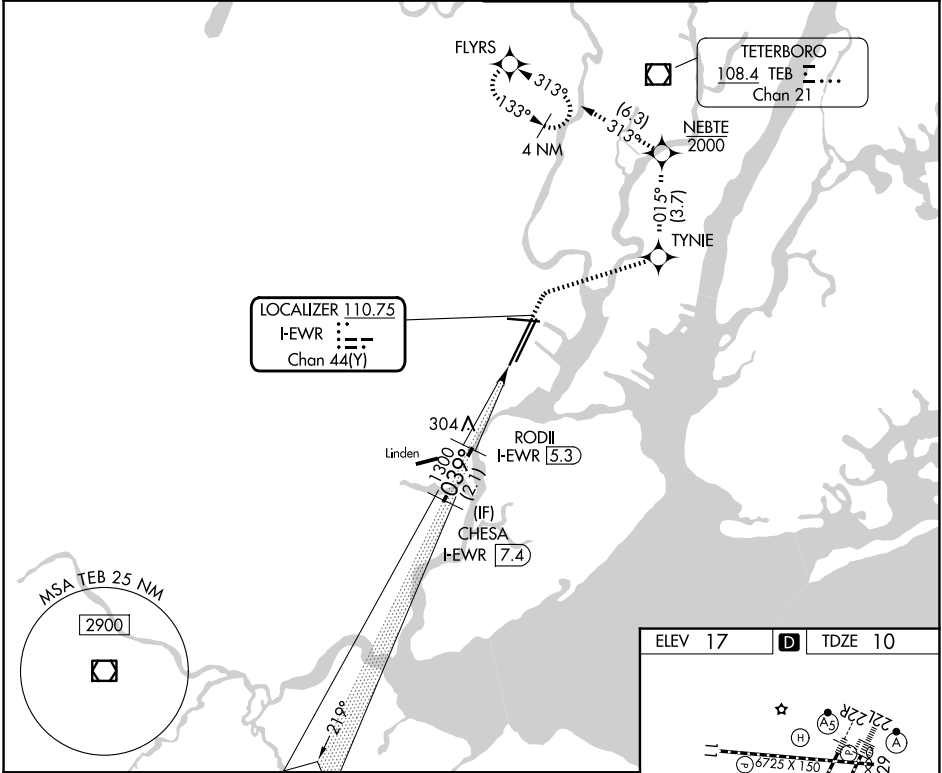
NEWARK LIBERTY INTL (EWR)

RNP APCH - GPS.
DME and RADAR required.
▼
▲ NA



MISSED APPROACH: Climb to 520, then climbing right turn to 2000 direct TYNIE, then on track 015° to NEBTE, cross NEBTE at or below 2000, then climbing left turn to 3000 on track 313° to FLYRS and hold.

D-ATIS 115.7 134.825	NEWARK APP CON 128.55 379.9	NEWARK TOWER 118.3 257.6	GND CON 121.8
--------------------------------	---------------------------------------	------------------------------------	-------------------------



VGSI and ILS glidepath not coincident (VGSI Angle 3.10/TCH 77).	520	2000	TYNIE	tr 015°	NEBTE 2000	3000	FLYRS
---	-----	------	-------	---------	------------	------	-------

