

DEVIL ONE DEPARTURE
(DEVIL1.EWR) 30NOV23

DEVIL ONE DEPARTURE
(DEVIL1.EWR) 24Z27

A1-285 (FAA)

NEWARK LIBERTY INTL (EWR)
NEWARK, NEW JERSEY

NEWARK DEP CON
119.2 379.9
D-ATIS
134.825
CLNC DEL 118.85
CPDLC
GND CON 121.8
NEWARK TOWER
118.3 257.6

HUGUENOT
116.1 HUO
Chan 108

TOP ALTITUDE:
2000

GREKI

KINGSTON
117.6 IGN
Chan 123

MERIT

BAYYS

BREZY

CARMEL
116.6 CMK
Chan 113

BRIDGEPORT
108.8 BDR
Chan 25

DEER PARK
117.7 DPK
Chan 124

KENNEDY
115.9 JFK
Chan 106

LOCALIZER 108.7
I-EZA
Chan 24

LA GUARDIA
113.1 LGA
Chan 78

LOCALIZER 110.75
I-EWR
Chan 44 (Y)

BROADWAY
114.2 BWZ
Chan 89

SPARTA
115.7 SAX
Chan 104

ELIOT
ZIMMZ

PARKE

EAST TEXAS
110.2 ETX
Chan 39

LANNA

BIGGY

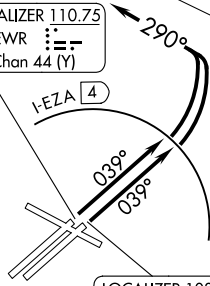
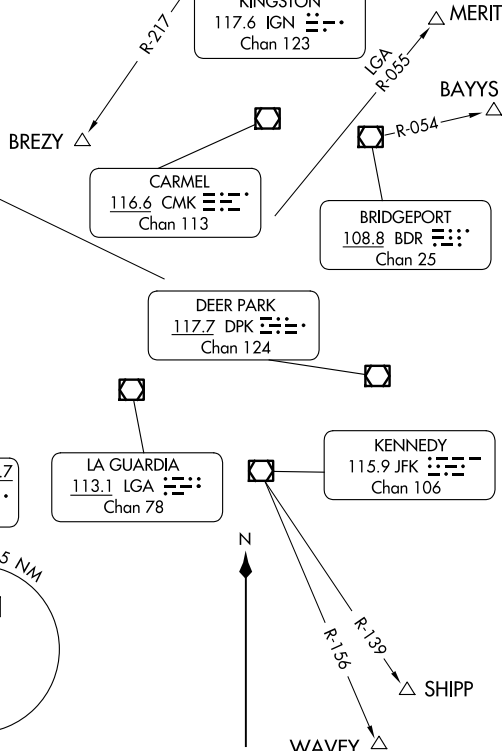
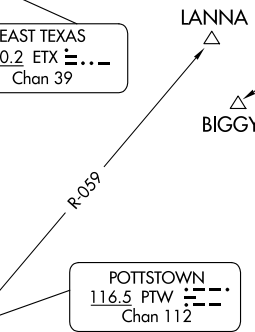
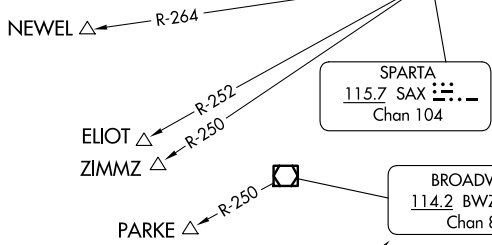
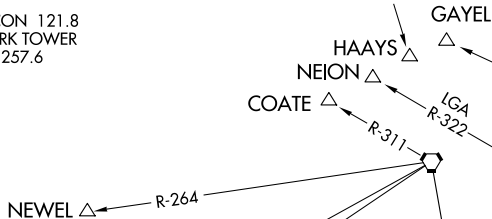
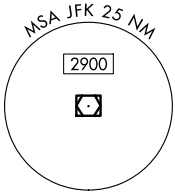
SOLBERG
112.9 SBJ
Chan 76

ELVAE

NECK

WHITE

DIXIE



(NARRATIVE ON FOLLOWING PAGE)

RNAV 1 - GPS. For DIXIE and WHITE Departures.
RADAR and DME required.

NOTE: Chart not to scale.

NEWARK, NEW JERSEY
NEWARK LIBERTY INTL (EWR)

DEVIL ONE DEPARTURE

AL-285 (FAA)

NEWARK, NEW JERSEY



DEPARTURE ROUTE DESCRIPTION

TAKEOFF RUNWAY 4L/R: Climb on heading 039° until I-EZA 4 DME (use I-EWR 3.6 DME when I-EZA is NA), then climbing left to turn heading 290°, maintain 2000, thence....

...as per notes or for RADAR vectors to assigned route/fix. Expect clearance to filed altitude/flight level ten (10) minutes after departure. Thence....

LOST COMMUNICATIONS: For aircraft proceeding to COATE, NEION, HAAYS, GAYEL, or BREZY, if radio contact lost/not established with ATC, climb to 3000 after SBJ R-054.

NOTE: Rwy 4L/R, simultaneous reception of EWR ILS/DME required.

Depart Rwy 4L/R

Expect RADAR VECTORS to:

DP FIX	
BAYYS	BDR/BDR R-054
BIGGY	SBJ /SBJ R-237
BREZY	IGN R-217 to BREZY
COATE	SAX/SAX R-311
DIXIE	ELVAE/NECCK
ELIOT	SAX R-252
GAYEL	DPK R-320
HAAYS	HUO
LANNA	PTW R-059
MERIT	LGA R-055
NEION	LGA R-322
NEWEL	SAX/SAX R-264
PARKE	BWZ R-250
SHIPP	JFK/JFK R-139
WAVEY	JFK/JFK R-156
WHITE	ELVAE/NECCK
ZIMMZ	SAX R-250

NOTE: ELIOT may be accessed by all types of aircraft requesting a final altitude of 14000 or 16000.

NOTE: NEWEL may be accessed by turbo jet aircraft only requesting a final altitude at or above FL180.

NOTE: ZIMMZ may be accessed by all types of aircraft requesting a final altitude at or above FL180.

TAKEOFF MINIMUMS:

Rwy 4L: Standard with minimum climb of 365'/NM to 800.

Rwy 4R: Standard with minimum climb of 345'/NM to 800.

NE-2, 16 APR 2026 to 14 MAY 2026

NE-2, 16 APR 2026 to 14 MAY 2026