

GBAS CH <b>21905</b> <b>G11A</b>	APP CRS <b>108°</b>	Rwy Ldg TDZE <b>17</b> Apt Elev <b>17</b>	<b>6725</b>
----------------------------------------	------------------------	-------------------------------------------------	-------------

# GLS RWY 11

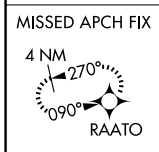
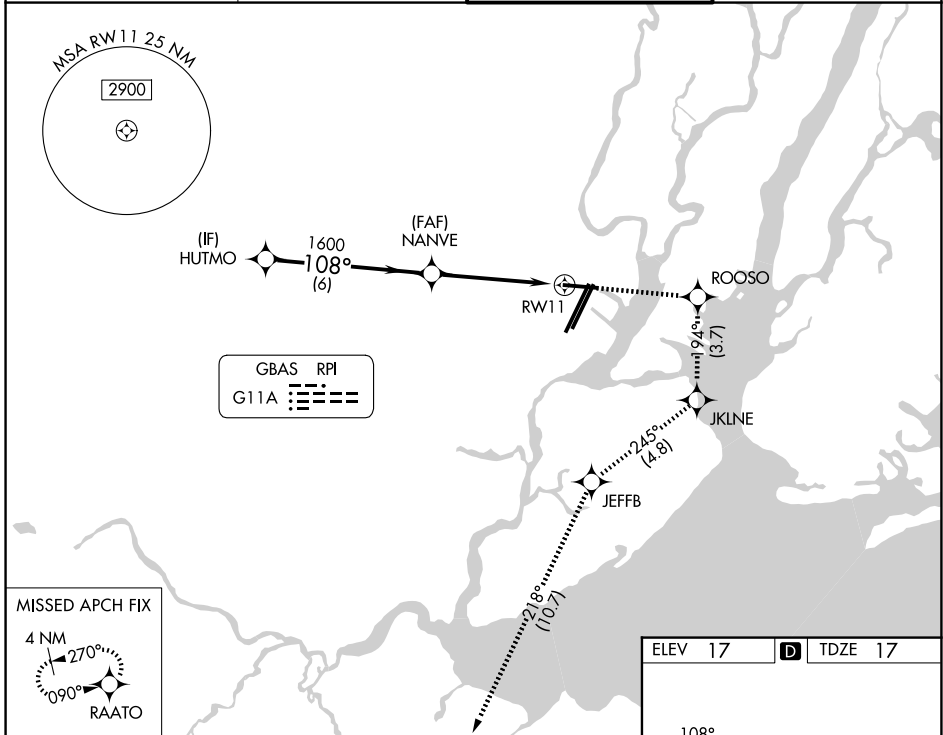
NEWARK LIBERTY INTL (EWR)

RNP APCH - GPS.  
RADAR required.

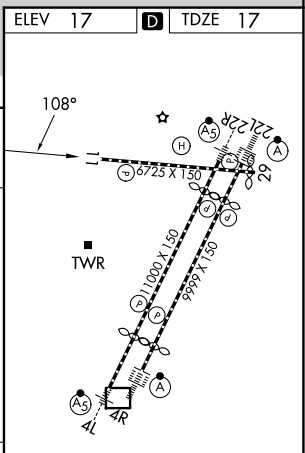
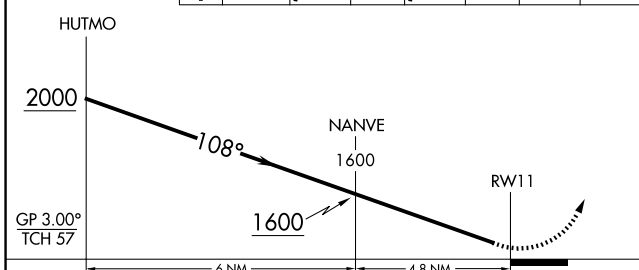
MISSED APPROACH: (Do not exceed 230K until JKLINE)  
Climb to 2000 direct ROOSO and right turn on track 194° to JKLINE and right turn on track 245° to JEFFB and left turn on track 218° to RAATO and hold.

Autopilot coupled approach NA below 312.  
Rwy 11 helicopter visibility reduction below RVR 4000 NA.

D-ATIS <b>115.7 134.825</b>	NEWARK APP CON <b>128.55 379.9</b>	NEWARK TOWER <b>118.3 257.6</b>	GND CON <b>121.8</b>
--------------------------------	---------------------------------------	------------------------------------	-------------------------



2000	ROOSO	JKLINE	JEFFB	RAATO
↑	tr 194°	tr 245°	tr 218°	



CATEGORY	A	B	C	D
GLS DA	312/45		295 (300-7%)	

HIRL all rwys  
REIL Rwy 11, 22R, and 29  
TDZL/RCLS all rwys

NE-2, 16 APR 2026 to 14 MAY 2026

NE-2, 16 APR 2026 to 14 MAY 2026