

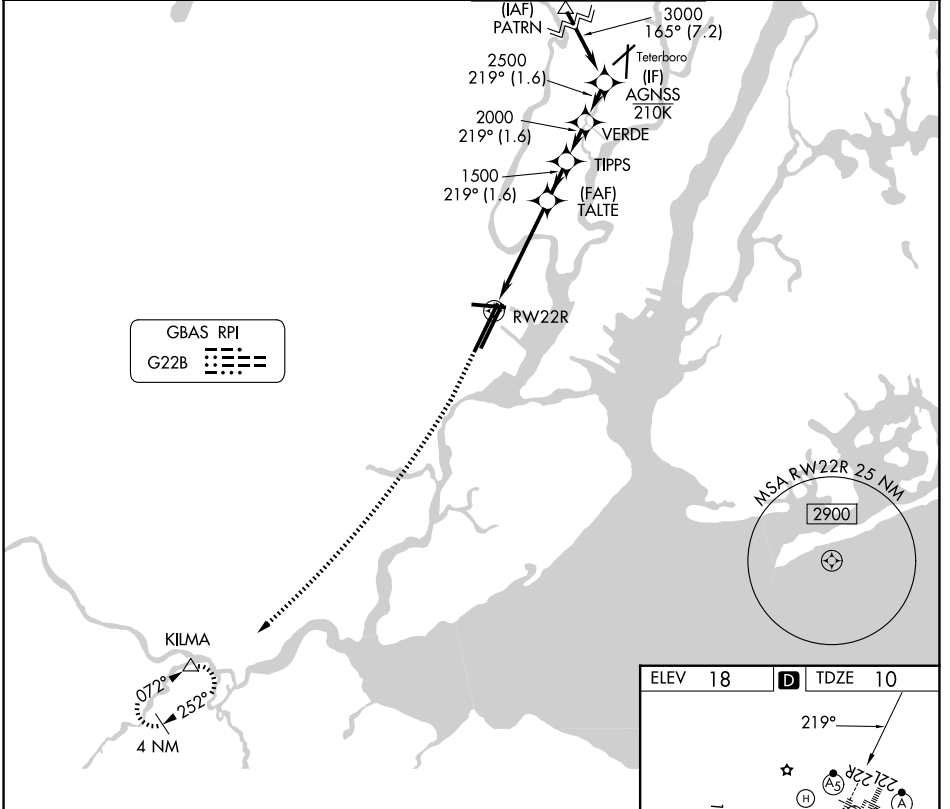
GBAS CH <b>20672</b> <b>G22B</b>	APP CRS <b>219°</b>	Rwy Ldg TDZE <b>10</b> Apt Elev <b>18</b>	<b>9559</b>
--	------------------------	---	-------------

# GLS RWY 22R

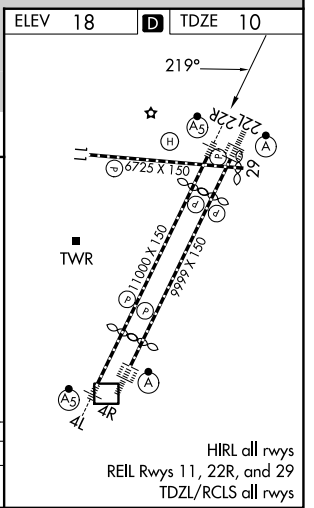
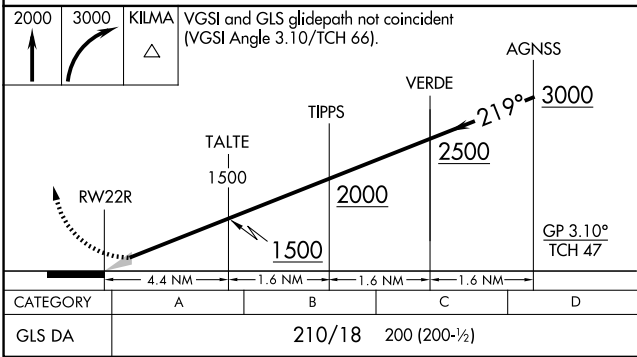
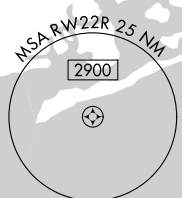
NEWARK LIBERTY INTL (EWR)

RNP APCH - GPS.	MALSR	MISSED APPROACH: Climb to 2000, then climbing right turn to 3000 direct KILMA and hold.
<p>Autopilot coupled approach NA below 210.</p> <p>Caution, departing TEB Rwy 24 traffic climbing to 1500 MSL.</p>		

D-ATIS <b>115.7 134.825</b>	NEWARK APP CON <b>128.55 379.9</b>	NEWARK TOWER <b>118.3 257.6</b>	GND CON <b>121.8</b>
--------------------------------	---------------------------------------	------------------------------------	-------------------------



GBAS RPI  
G22B



NE-2, 16 APR 2026 to 14 MAY 2026

NE-2, 16 APR 2026 to 14 MAY 2026