

LOC/DME I-LSQ	APP CRS	Rwy Ldg	8205
108.7	219°	TDZE	10
Chan 24		Apt Elev	18

# ILS RWY 22L (CAT II & III)

NEWARK LIBERTY INTL (EWR)

RNP APCH - GPS. From PATRN.

DME required. Aircraft not GPS equipped - RADAR required for procedure entry.

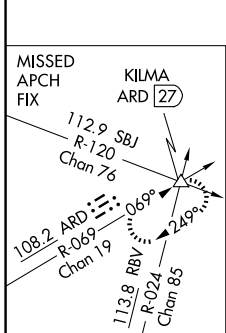
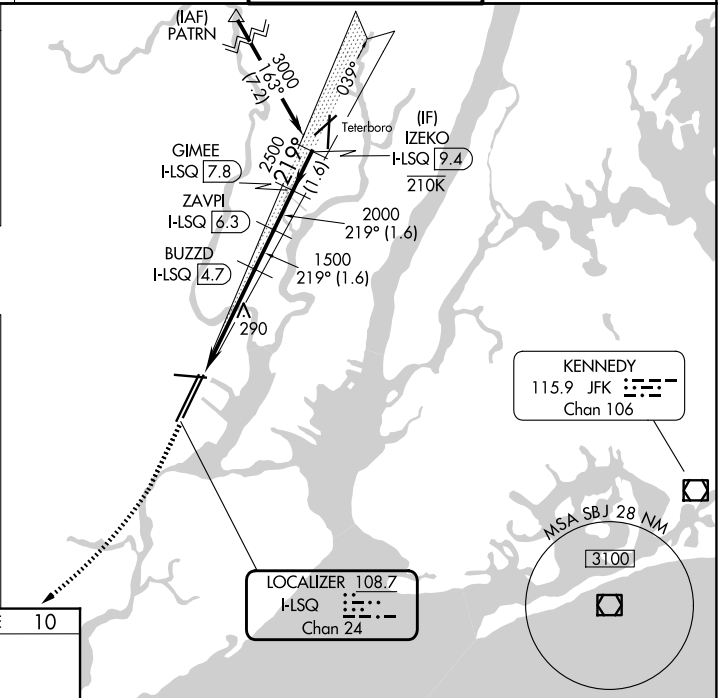
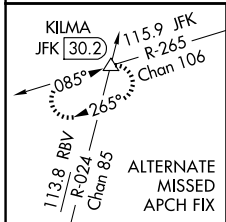
ALSIF-2

MISSED APPROACH: Climb to 500 then climbing right turn to 3000 on heading 225° and ARD VOR/DME R-069 to KILMA INT/ARD 27 DME and hold.

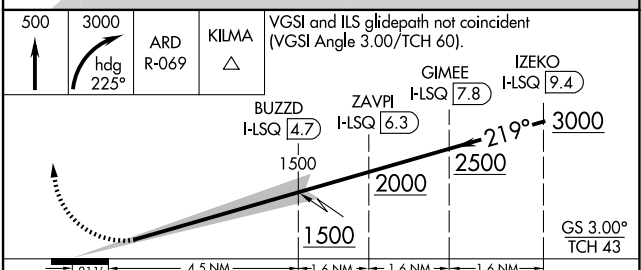
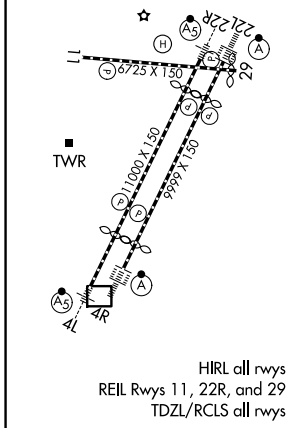
**⚠** CAT II: RVR 1000 authorized with specific OPSPEC, MSPEC, or LOA approval and use of autoland or HUD to touchdown. Caution, departing TEB Rwy 24 traffic climbing to 1500' MSL.



D-ATIS	NEWARK APP CON	NEWARK TOWER	GND CON
115.7 134.825	128.55 379.9	118.3 257.6	121.8



ELEV	18	D	TDZE	10
------	----	---	------	----



CATEGORY	A	B	C	D
S-ILS 22L	CAT II RA 100/14 100 DA 110			
S-ILS 22L	CAT III RVR 06			

## CATEGORY II & III ILS - SPECIAL AIRCREW & AIRCRAFT CERTIFICATION REQUIRED

NE-2, 16 APR 2026 to 14 MAY 2026

NE-2, 16 APR 2026 to 14 MAY 2026