

LOC/DME I-LSQ	APP CRS	Rwy Ldg	8205
<b>108.7</b>	<b>219°</b>	TDZE	<b>10</b>
Chan <b>24</b>		Apt Elev	<b>18</b>

# ILS RWY 22L (SA CAT I)

NEWARK LIBERTY INTL (EWR)

RNP APCH - GPS. From PATRN.

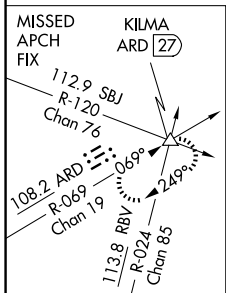
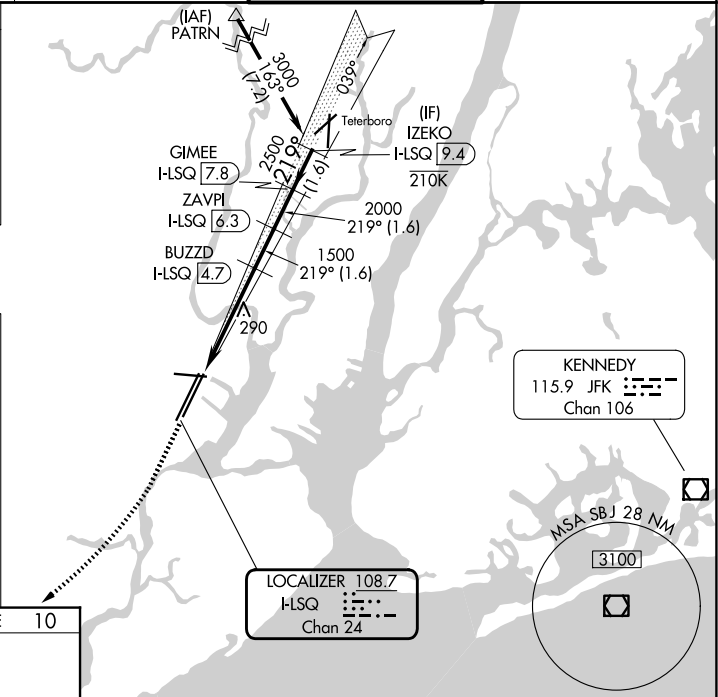
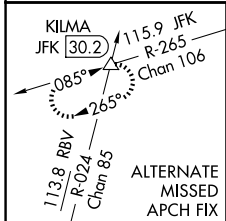
DME required. Aircraft not GPS equipped - RADAR required for procedure entry.

Requires specific OPSPEC, MSPEC, or LOA approval.  
Caution, departing TEB Rwy 24 traffic climbing to 1500' MSL.

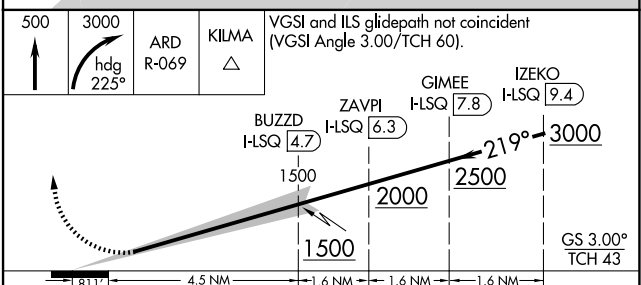
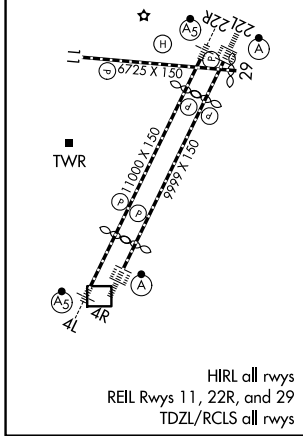
ALSIF-2

MISSED APPROACH: Climb to 500 then climbing right turn to 3000 on heading 225° and ARD VOR/DME R-069 to KLMA INT/ARD 27 DME and hold.

D-ATIS <b>115.7 134.825</b>	NEWARK APP CON <b>128.55 379.9</b>	NEWARK TOWER <b>118.3 257.6</b>	GND CON <b>121.8</b>
--------------------------------	---------------------------------------	------------------------------------	-------------------------



ELEV	18	D	TDZE	10
------	----	---	------	----



CATEGORY	A	B	C	D
S-ILS 22L	RA 150/12 150 DA 160			

**SA CATEGORY I ILS - SPECIAL AIRCREW & AIRCRAFT CERTIFICATION REQUIRED**