

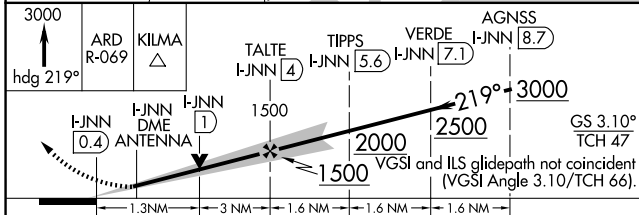
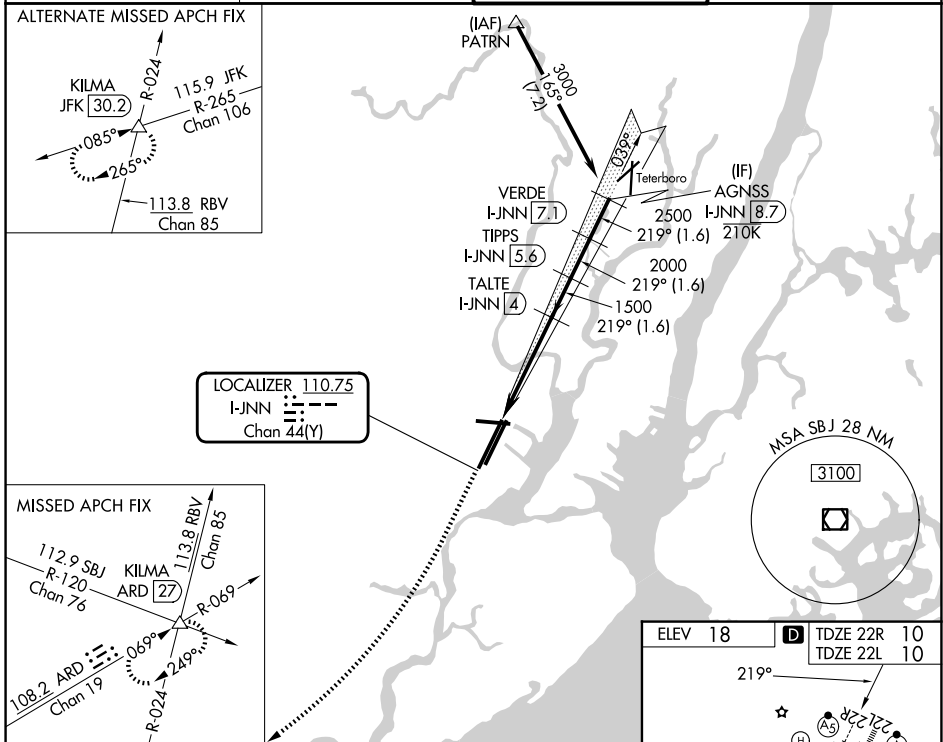
LOC/DME I-JNN <b>110.75</b> Chan 44(Y)	APP CRS <b>219°</b>	Rwy Ldg 22R 22L 9559 8205
		TDZE <b>10 10</b>
		Apt Elev <b>18 18</b>

# ILS or LOC RWY 22R

NEWARK LIBERTY INTL (EWR)

RNP APCH - GPS. From PATRN.		22R MALS R	22L ALSF-2	MISSED APPROACH: Climb to 3000 on heading 219° and ARD VOR/DME R-069 to KLIMA INT/ARD 27 DME and hold.
DME required. Aircraft not GPS equipped - RADAR required for procedure entry.				
<p>⚠ Circling NA south of Rwy 11-29. When Circling to Rwy 29 at night, operational VGSI required, remain on or above VGSI glidepath until threshold. For inop ALS, increase S-LOC 22R Cat C/D visibility to 1½ SM. Caution, departing TEB Rwy 24 traffic climbing to 1500' MSL.</p>				

D-ATIS <b>115.7 134.825</b>	NEWARK APP CON <b>128.55 379.9</b>	NEWARK TOWER <b>118.3 257.6</b>	GND CON <b>121.8</b>
--------------------------------	---------------------------------------	------------------------------------	-------------------------



ELEV 18	TDZE 22R 10	TDZE 22L 10			
HIRL all rwys					
REIL Rws 11, 22R, and 29					
TDZL/RCLS all rwys					
FAF to MAP 4.4 NM					
Knots	60	90	120	150	180
Min:Sec	4:24	2:56	2:12	1:46	1:28

NE-2, 16 APR 2026 to 14 MAY 2026

NE-2, 16 APR 2026 to 14 MAY 2026