

LOC/DME I-EZA 108.7 Chan 24	APP CRS 039°	Rwy Ldg 4R 8809 4L 8459 TDZE 11 10 Apt Elev 17 17
---	------------------------	--

ILS or LOC RWY 4R

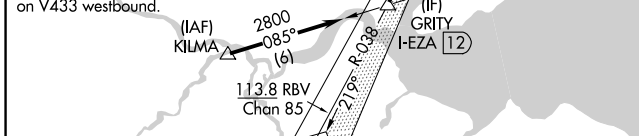
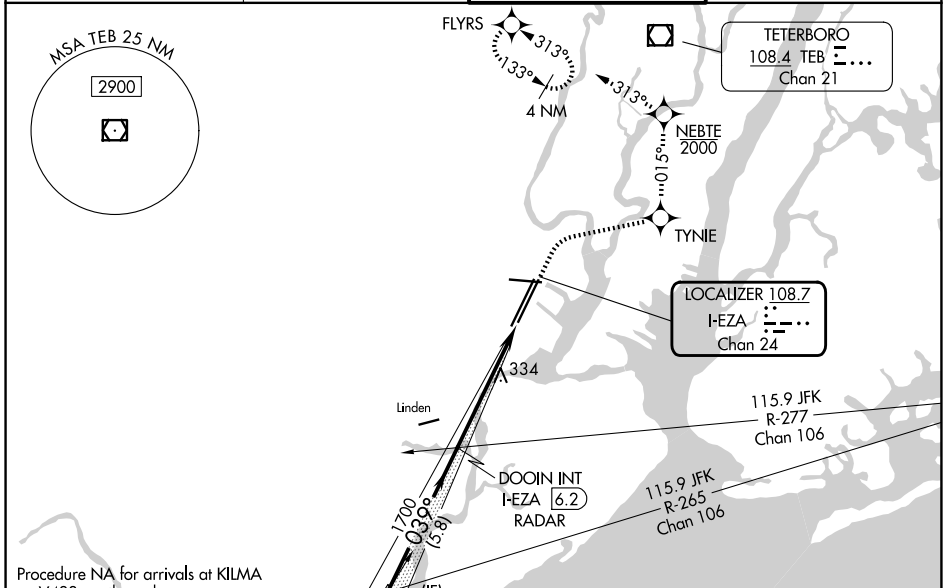
NEWARK LIBERTY INTL (EWR)

RNP APCH - GPS. RADAR required.

When Circling to Rwy 29 at night, operational VGSI required, remain on or above VGSI glidepath until threshold. For inop ALS, increase Sidestep 4L Cat C visibility to 1½ SM.

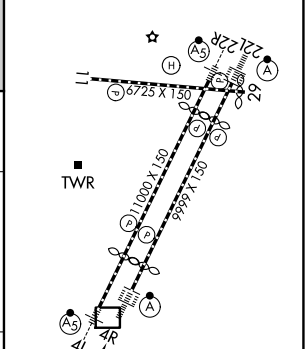
4R ALSF-2	4L MALS	MISSED APPROACH: (Do not exceed 210K until NEBTE) Climb to 560 then climbing right turn to 2000 direct TYNIE and left turn on track 015° to NEBTE, cross NEBTE at or below 2000 then climbing left turn to 3000 on track 313° to FLYRS and hold, continue climb-in-hold to 3000.
-----------	---------	--

D-ATIS 115.7 134.825	NEWARK APP CON 128.55 379.9	NEWARK TOWER 118.3 257.6	GND CON 121.8
--------------------------------	---------------------------------------	------------------------------------	-------------------------



ELEV 17	TDZE 4R 11
	TDZE 4L 10

	560	2000	TYNIE	NEBTE	3000	FLYRS
	↑	↻	↻ tr 015°	↻ tr 313°	↻	↻



CATEGORY	A	B	C	D
S-ILS 4R	211/18 200 (200-½)			
S-LOC 4R	600/24	589 (600-½)	600-1¼	589 (600-1¼)
SIDESTEP RWY 4L	600/55	590 (600-1)	600-1¼	600-1½
			590 (600-1¼)	590 (600-1½)
CIRCLING	760-1	743 (800-1)	900-2¾	900-3
			883 (900-2¾)	883 (900-3)

NE-2, 16 APR 2026 to 14 MAY 2026

NE-2, 16 APR 2026 to 14 MAY 2026