

LOC/DME I-EWR	APP CRS	Rwy Ldg	8459
110.75	039°	TDZE	10
Chan 44 (Y)		Apt Elev	17

ILS Z RWY 4L (SA CAT I & II)

NEWARK LIBERTY INTL (EWR)

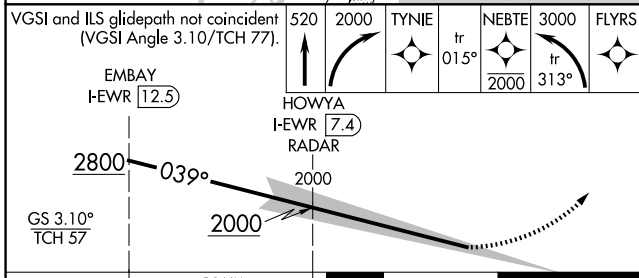
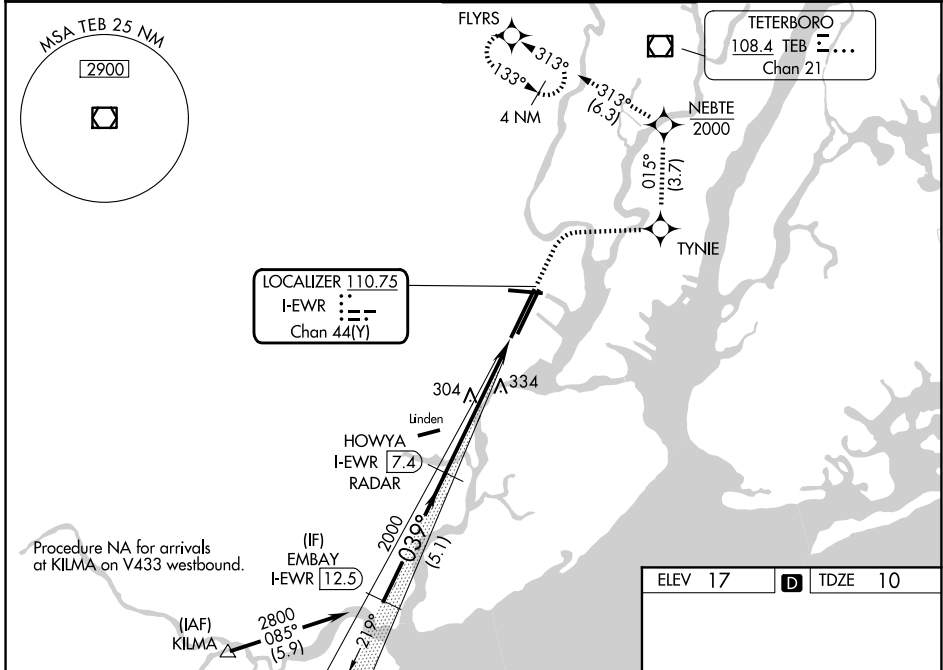
RNP APCH - GPS.
 DME and RADAR required.

SA CAT I: Requires specific OPSPEC, MSPEC, or LOA approval and use of HUD to DH.
 SA CAT II: Reduced lighting: requires specific OPSPEC, MSPEC, or LOA approval and use of autoland or HUD to touchdown.

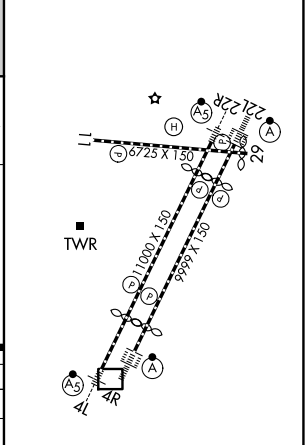
MALSRS

MISSED APPROACH: (Do not exceed 210K until NEBTE) Climb to 520, then climbing right turn to 2000 direct TYNIE and on track 015° to NEBTE, cross NEBTE at or below 2000, then climbing left turn to 3000 on track 313° to FLYRS and hold, continue climb-in-hold to 3000.

D-ATIS	NEWARK APP CON	NEWARK TOWER	GND CON
115.7 134.825	128.55 379.9	118.3 257.6	121.8



ELEV 17	TDZE 10
---------	---------



VGSI and ILS glidepath not coincident (VGSI Angle 3.10/TCH 77).	520	2000	TYNIE	tr 015°	NEBTE	3000	FLYRS
	EMBAY I-EWR 12.5				tr 313°		
		HOWYA I-EWR 7.4					
		RADAR					
	2800						
	GS 3.10%						
	TCH 57						
	5.1 NM	5.9 NM	1046'				

CATEGORY	A	B	C	D
S-ILS 4L	SA CAT I	RA 150/14	150	DA 160
S-ILS 4L	SA CAT II	RA 100/12	100	DA 110