

(LIB5. LIB) 10SEP20

LIBERTY FIVE DEPARTURE

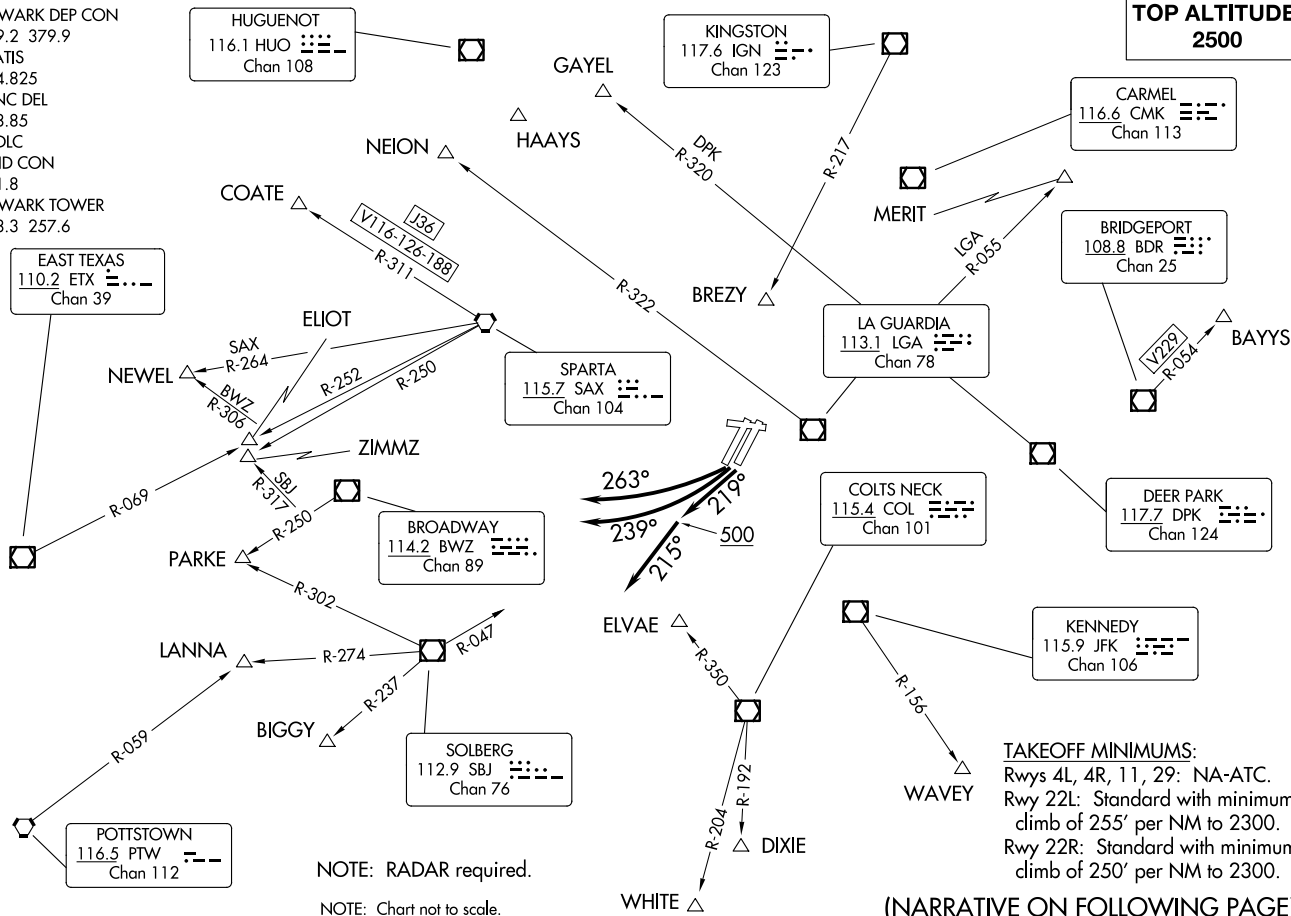
NEWARK DEP CON  
119.2 379.9  
D-ATIS  
134.825  
CLNC DEL  
118.85  
CPDLC  
GND CON  
121.8  
NEWARK TOWER  
118.3 257.6

TOP ALTITUDE:  
2500

(LIB5. LIB) 23303  
LIBERTY FIVE DEPARTURE

AI-285 (FAA)

NEWARK LIBERTY INTL (E/WTR)  
NEWARK, NEW JERSEY



NOTE: RADAR required.

NOTE: Chart not to scale.

TAKEOFF MINIMUMS:

Rwys 4L, 4R, 11, 29: NA-ATC.  
Rwy 22L: Standard with minimum  
climb of 255' per NM to 2300.  
Rwy 22R: Standard with minimum  
climb of 250' per NM to 2300.

(NARRATIVE ON FOLLOWING PAGE)

NEWARK, NEW JERSEY  
NEWARK LIBERTY INTL (E/WTR)



DEPARTURE ROUTE DESCRIPTION

TURNPIKE CLIMB: Climb on heading 219° to 500, then climb heading 215°, or as assigned by ATC, thence....

PARKWAY CLIMB: Climbing right turn to heading 239°, or as assigned by ATC, thence....

BUD CLIMB: Climbing right turn on heading 263°, or as assigned by ATC, thence....

....expect radar vectors to assigned route/fix. Maintain 2500. Expect clearance to filed altitude/flight level within 10 minutes after departure.

LOST COMMUNICATIONS: For aircraft proceeding to COATE, NEION, HAAYS, GAYEL, or BREZY, if radio contact lost/not established with ATC, climb to 3000' after SBJ R-047.

NOTE: Rwy 22L/R Departures:

NOTE: BAYYS departures expect vectors to BDR/BDR R-054.

NOTE: BIGGY departures expect vectors to SBJ/SBJ R-237.

NOTE: BREZY departures expect vectors to IGN R-217 to BREZY.

NOTE: COATE departures expect vectors to SAX/SAX R-311.

NOTE: ELIOT departures expect vectors to SAX R-252 between 2300 and 0700 local. ELIOT departures expect vectors to SBJ or ETX. ELIOT may be accessed by all type aircraft requesting final altitude of 14000 or 16000.

NOTE: GAYEL departures expect vectors to DPK R-320.

NOTE: HAAYS departures expect vectors to HUO.

NOTE: LANNA departures expect vectors to SBJ/SBJ R-274.

NOTE: MERIT departures expect vectors to LGA R-055.

NOTE: NEION departures expect vectors to LGA R-322.

NOTE: NEWEL departures expect vectors to SAX R-264. NEWEL may be accessed by turbojet aircraft only requesting a final altitude at or above FL180.

NOTE: PARKE departures expect vectors to SBJ/SBJ R-302.

NOTE: WAVEY departures expect vectors to JFK/JFK R-156.

NOTE: WHITE/DIXIE departures expect vectors to COL R-350 or ELVAE/COL thence to WHITE on COL R-204 or to DIXIE on COL R-192.

NOTE: ZIMMZ departures expect vectors to SAX R-250. ZIMMZ may be accessed by all type of aircraft requesting a final altitude at or above FL180.

NE-2, 16 APR 2026 to 14 MAY 2026

NE-2, 16 APR 2026 to 14 MAY 2026