

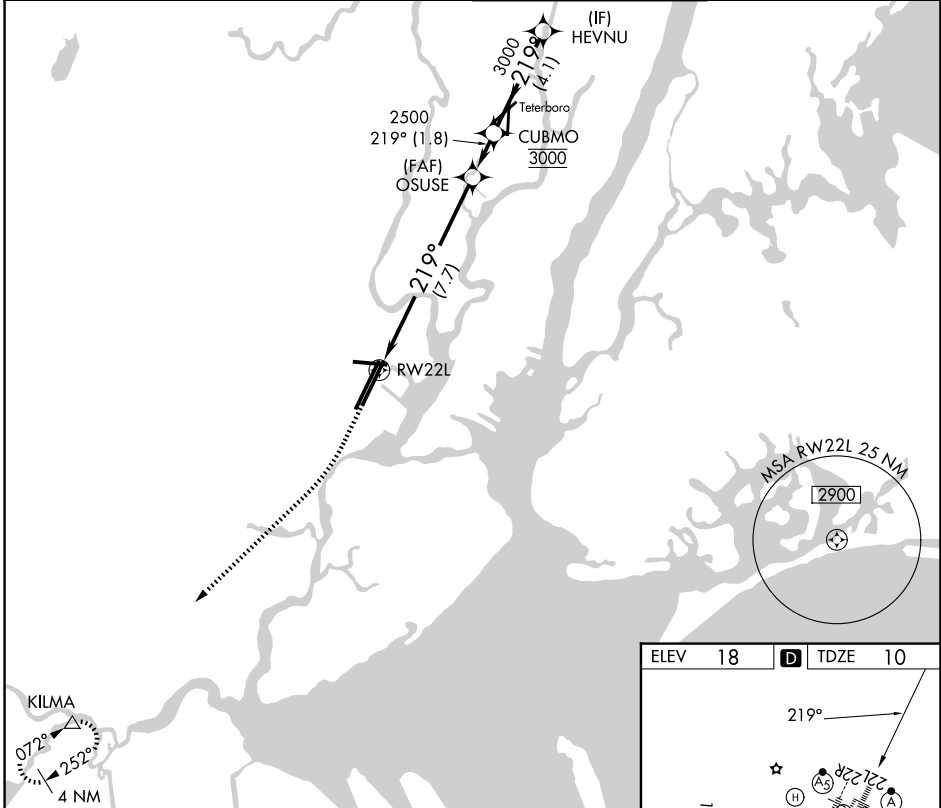
# RNAV (RNP) Y RWY 22L

NEWARK LIBERTY INTL (EWR)

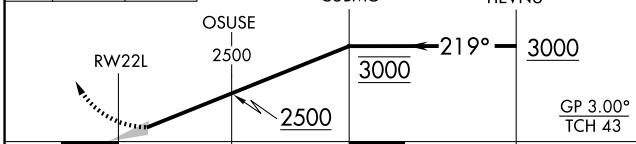
APP CRS	Rwy Ldg	<b>8205</b>
<b>219°</b>	TDZE	<b>10</b>
	Apt Elev	<b>18</b>

RNP AR APCH - GPS.	ALSF-2	MISSED APPROACH: Climb to 600 then climbing right turn to 3000 direct KILMA and hold.
▼ For uncompensated Baro-VNAV systems, procedure NA below -11°C or above 54°C. Caution, departing TEB Rwy 24 traffic climbing to 1500 feet MSL.		

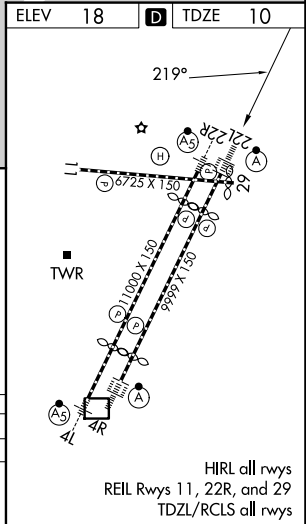
D-ATIS <b>115.7 134.825</b>	NEWARK APP CON <b>128.55 379.9</b>	NEWARK TOWER <b>118.3 257.6</b>	GND CON <b>121.8</b>
--------------------------------	---------------------------------------	------------------------------------	-------------------------



600	3000	KILMA	VGSI and RNAV glidepath not coincident (VGSI Angle 3.00/TCH 60).
↑	↘	△	



CATEGORY	A	B	C	D
RNP 0.30 DA	461/45		451 (500-7%)	



HIRL all rwys  
REIL Rwsy 11, 22R, and 29  
TDZL/RCLS all rwys

**AUTHORIZATION REQUIRED**

NE-2, 16 APR 2026 to 14 MAY 2026

NE-2, 16 APR 2026 to 14 MAY 2026