

RNAV (RNP) Z RWY 29

NEWARK LIBERTY INTL (EWR)

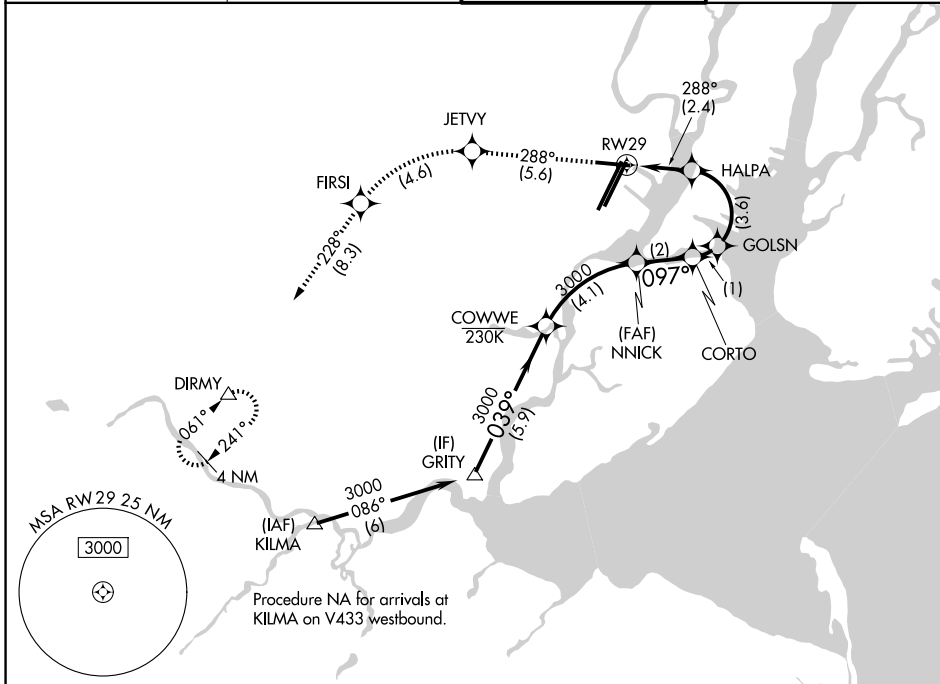
| | | |
|-------------|----------|-------------|
| APP CRS | Rwy Ldg | 6501 |
| 288° | TDZE | 10 |
| | Apt Elev | 18 |

RNP AR APCH. RF required.

▼ Straight-in Rwy 29 at night, operational VGSI required, remain on or above VGSI glidepath until threshold. For uncompensated Baro-VNAV systems, procedure NA below -14°C or above 54°C.
 ▲ NA * Missed approach requires minimum climb of 340 feet per NM to 800.

MISSED APPROACH: Climb to 3000 on track 288° to JETVY and left turn to FIRSI, and on track 228° to DIRMY and hold.

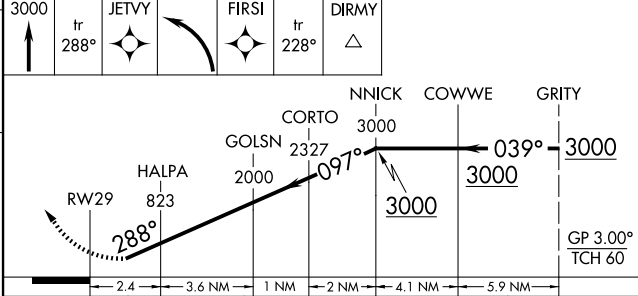
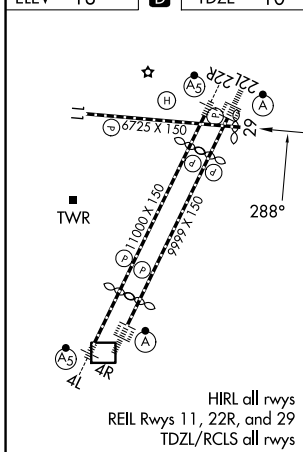
| | | | |
|----------------------|---------------------|--------------------|--------------|
| D-ATIS | NEWARK APP CON | NEWARK TOWER | GND CON |
| 115.7 134.825 | 128.55 379.9 | 118.3 257.6 | 121.8 |



NE-2, 16 APR 2026 to 14 MAY 2026

NE-2, 16 APR 2026 to 14 MAY 2026

| | | |
|---------|----------|---------|
| ELEV 18 | D | TDZE 10 |
|---------|----------|---------|



| CATEGORY | A | B | C | D |
|--------------|--------|--------------|---|----|
| RNP 0.16 DA | 466-1½ | 456 (500-1½) | | NA |
| *RNP 0.30 DA | 485-1½ | 475 (500-1½) | | NA |
| RNP 0.30 DA | 573-2 | 563 (600-2) | | NA |

AUTHORIZATION REQUIRED

RNAV (RNP) Z RWY 29