

RNAV (GPS) Y RWY 4R

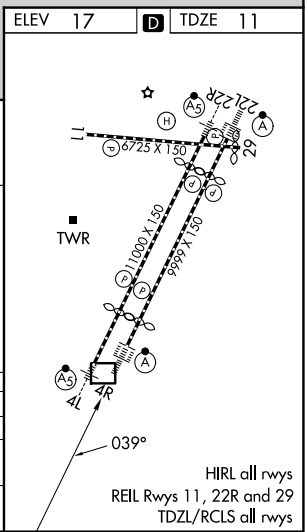
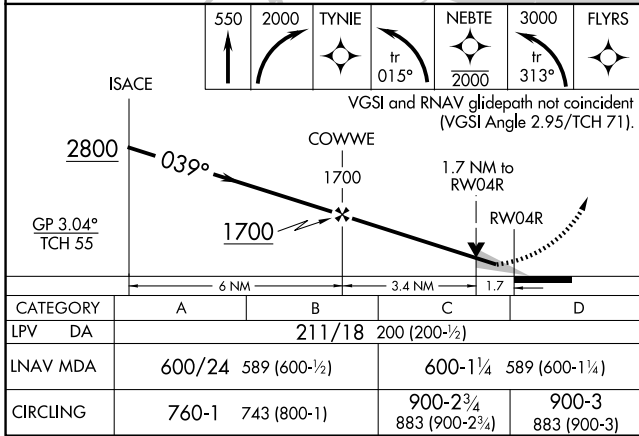
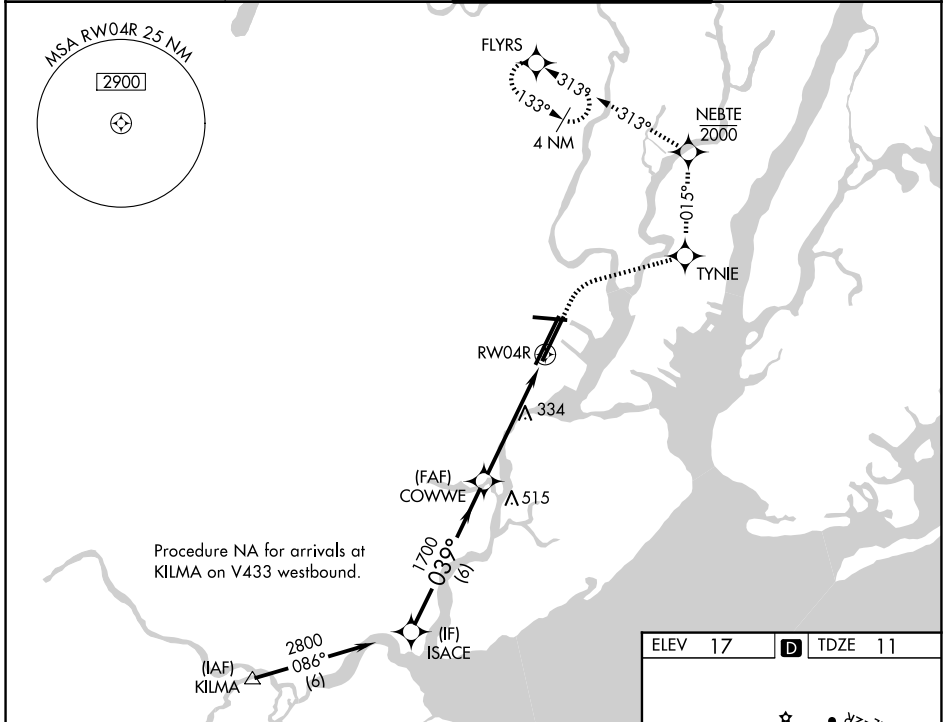
NEWARK LIBERTY INTL (EWR)

WAAS CH 60924 W04B	APP CRS 039°	Rwy Ldg 8809 TDZE 11 Apt Elev 17
--	------------------------	---

RNP APCH - GPS.
RADAR required.
⚠ When Circling to Rwy 29 at night, operational VGSI required, remain on or above VGSI glidepath until threshold.

ALSIF-2
MISSED APPROACH: (Do not exceed 210K until NEBTE) Climb to 550 then climbing right turn to 2000 direct TYNIE and left turn on track 015° to NEBTE, cross NEBTE at or below 2000 then climbing left turn to 3000 on track 313° to FLYRS and hold, continue climb-in-hold to 3000.

D-ATIS 115.7 134.825	NEWARK APP CON 128.55 379.9	NEWARK TOWER 118.3 257.6	GND CON 121.8
--------------------------------	---------------------------------------	------------------------------------	-------------------------



RNAV (GPS) Y RWY 4R

NE-2, 16 APR 2026 to 14 MAY 2026

NE-2, 16 APR 2026 to 14 MAY 2026