

LOC/DME I-NEW 111.3 Chan 50	APP CRS 177°	Rwy Ldg 5510 TDZE 8 Apt Elev 8
---	------------------------	---

ILS or LOC RWY 18R

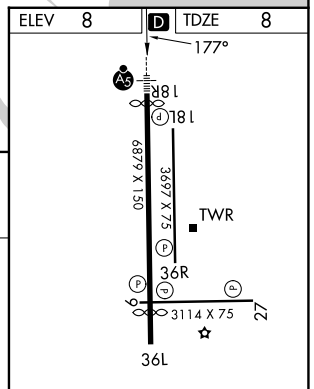
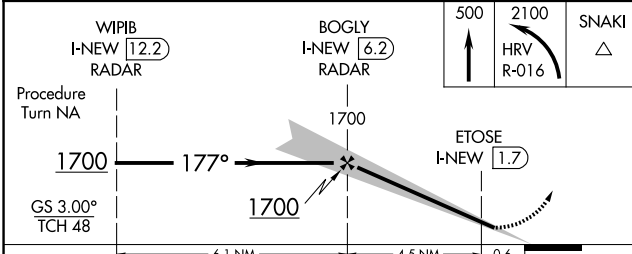
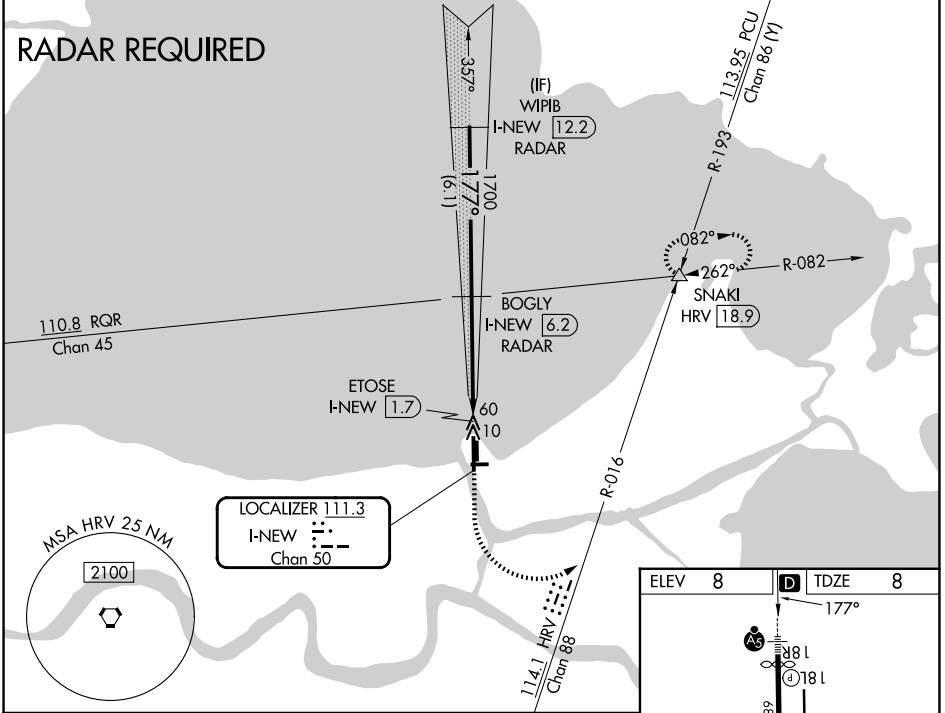
LAKEFRONT (NEW)

⚠ Inop table does not apply to S-ILS 18R. For inop MALSRS when using Louis Armstrong New Orleans Intl altimeter setting, increase S-LOC 18R Cats A-C visibility to 1 mile. For inop MALSRS, increase S-LOC 18R all Cats visibility to 1 mile. DME or RADAR required. Visibility reduction by helicopters NA. When local altimeter setting not received, use Louis Armstrong New Orleans Intl altimeter setting and increase all DA 29 feet and all MDA 40 feet; increase Circling Cat D visibility ¼ mile.



MISSED APPROACH: Climb to 500 then climbing left turn to 2100 on HRV VORTAC R-016 to SNAKI INT and hold.

ATIS 124.9	NEW ORLEANS APP CON 133.15 290.3 (N) 123.85 256.9 (S)	LAKEFRONT TOWER ★ 118.95 (CTAF) 0	GND CON 121.7 335.575
----------------------	---	---	---------------------------------



CATEGORY	A	B	C	D
S-ILS 18R		258-3/4	250 (300-3/4)	
S-LOC 18R		320-3/4	312 (400-3/4)	
CIRCLING	480-1 472 (500-1)	520-1 512 (600-1)	700-2 692 (700-2)	820-2 3/4 812 (900-2 3/4)

MRL Rwy 18R-36L	
MRL Rwy 9-27 and 18L-36R	
REIL Rwy 9, 18L, 36L and 36R	
FAF to MAP 4.5 NM	
Knots	60 90 120 150 180
Min:Sec	4:30 3:00 2:15 1:48 1:30

SC-4, 16 APR 2026 to 14 MAY 2026

SC-4, 16 APR 2026 to 14 MAY 2026