

WAAS CH 86913 W36A	APP CRS 357°	Rwy Ldg TDZE Apt Elev	5135 8 8
--	------------------------	-----------------------------	-------------------------------------

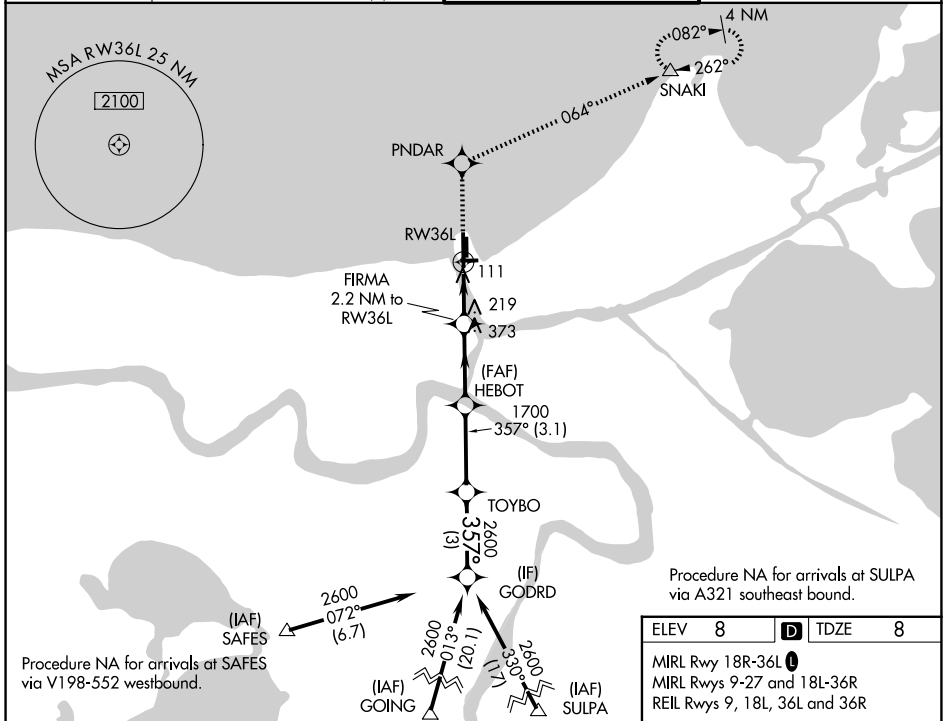
RNAV (GPS) RWY 36L

LAKEFRONT (NEW)

⚠ For uncompensated Baro-VNAV systems, LNAV/VNAV NA below -15°C (5°F) or above 49°C (120°F). DME/DME RNP-0.3 NA. When local altimeter setting not received, use Louis Armstrong New Orleans Intl altimeter setting; increase LPV DA to 369 feet, LNAV/VNAV DA to 460 feet and all visibilities ½ mile; increase all MDA 40 feet and Circling Cat D visibility ½ mile. VDP and Baro-VNAV NA when using Louis Armstrong New Orleans Intl altimeter setting.

MISSED APPROACH: Climb to 2100 direct PNDAR and via track 064° to SNAKI and hold.

ATIS 124.9	NEW ORLEANS APP CON 133.15 290.3 (N) 123.85 256.9 (S)	LAKEFRONT TOWER * 118.95 (CTAF) 0	GND CON 121.7 335.575
----------------------	---	---	---------------------------------

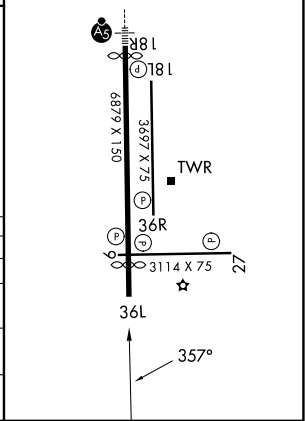
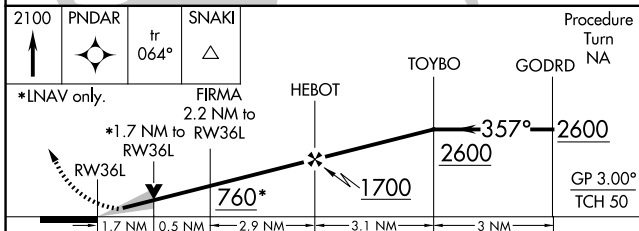


Procedure NA for arrivals at SAFES via V198-552 westbound.

Procedure NA for arrivals at SULPA via A321 southeast bound.

ELEV 8	D TDZE 8
--------	-----------------

MIRL Rwy 18R-36L
MIRL Rwy 9-27 and 18L-36R
REIL Rwy 9, 18L, 36L and 36R



CATEGORY	A	B	C	D
LPV DA	340-1 3/8 332 (400-1 1/8)			
LNAV/VNAV DA	431-1 3/8 423 (500-1 3/8)			
LNAV MDA	600-1	592 (600-1)	600-1 3/4	592 (600-1 1/4)
CIRCLING	600-1	592 (600-1)	700-2	820-2 3/4
			692 (700-2)	812 (900-2 3/4)

SC-4, 16 APR 2026 to 14 MAY 2026

SC-4, 16 APR 2026 to 14 MAY 2026