

VORTAC HRV <b>114.1</b> Chan <b>88</b>	APP CRS <b>351°</b>	Rwy Ldg <b>5135</b> TDZE <b>8</b> Apt Elev <b>8</b>
----------------------------------------------	------------------------	-----------------------------------------------------------

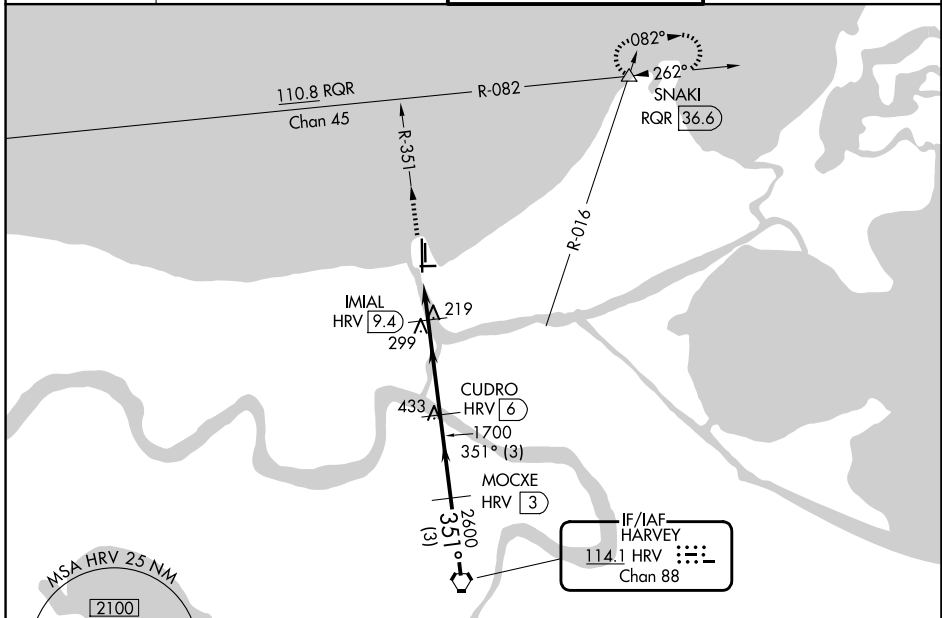
# VOR/DME RWY 36L

LAKEFRONT (NEW)

**▼** Visibility reduction by helicopters NA.  
**▲** When local altimeter setting not received, use Louis Armstrong New Orleans Intl altimeter setting and increase all MDA 40 feet and increase S-36L Cat C/D and Circling Cat D visibilities ¼ mile.

MISSED APPROACH: Climb to 2000 via HRV R-351 and RQR R-082 to SNAKI INT/RQR 36.6 DME and hold.

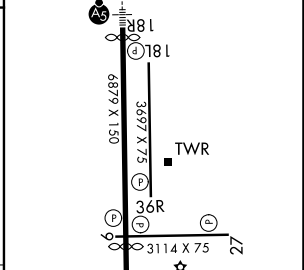
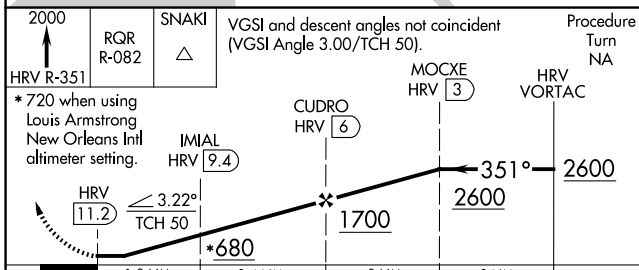
ATIS <b>124.9</b>	NEW ORLEANS APP CON <b>133.15 290.3 (N)</b> <b>123.85 256.9 (S)</b>	LAKEFRONT TOWER ★ <b>118.95 (CTAF)</b>	GND CON <b>121.7 335.575</b>
----------------------	---------------------------------------------------------------------------	-------------------------------------------	---------------------------------



Procedure NA for arrivals at HRV VORTAC via V552 southbound and A321 northwest bound.

ELEV <b>8</b>	<b>D</b> TDZE <b>8</b>
---------------	------------------------

MIRL Rwy 18R-36L  
 MIRL Rws 9-27 and 18L-36R  
 REIL Rws 9, 18L, 36L and 36R



CATEGORY	A	B	C	D
S-36L	480-1 472 (500-1)		480-1¼ 472 (500-1¼)	480-1½ 472 (500-1½)
CIRCLING	520-1 512 (600-1)		700-2 692 (700-2)	820-2¾ 812 (900-2¾)

SC-4, 16 APR 2026 to 14 MAY 2026

SC-4, 16 APR 2026 to 14 MAY 2026