

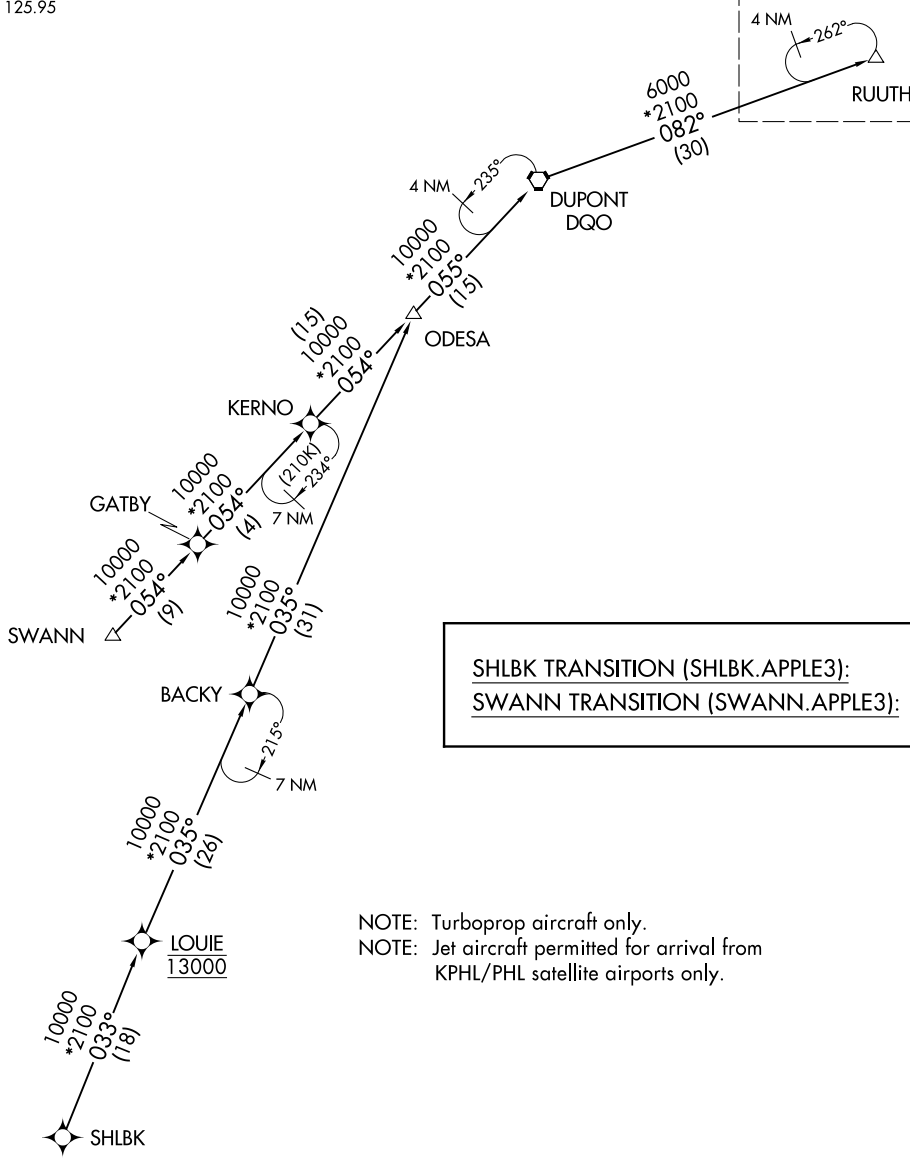
APPLE THREE ARRIVAL (RNAV) Transition Routes

PHILADELPHIA APP CON
119.75 269.25
POTOMAC APP CON
124.55 317.425
NEW YORK APP CON
127.3 263.0
D-ATIS ARR
125.95

RNAV 1 - DME/DME/IRU or GPS.

RADAR required.

See following page
for Arrival Route.
4 NM
262°
RUUTH



SHLBK TRANSITION (SHLBK.APPLE3):
SWANN TRANSITION (SWANN.APPLE3):

NOTE: Turboprop aircraft only.
NOTE: Jet aircraft permitted for arrival from
KPHL/PHL satellite airports only.

(CONTINUED ON FOLLOWING PAGE)

NOTE: Chart not to scale.

APPLE THREE ARRIVAL (RNAV) Transition Routes

NE-2, 16 APR 2026 to 14 MAY 2026

NE-2, 16 APR 2026 to 14 MAY 2026

(RUUTH.APPLE3) 24025

AL-289 (FAA)

LAGUARDIA (LGA)

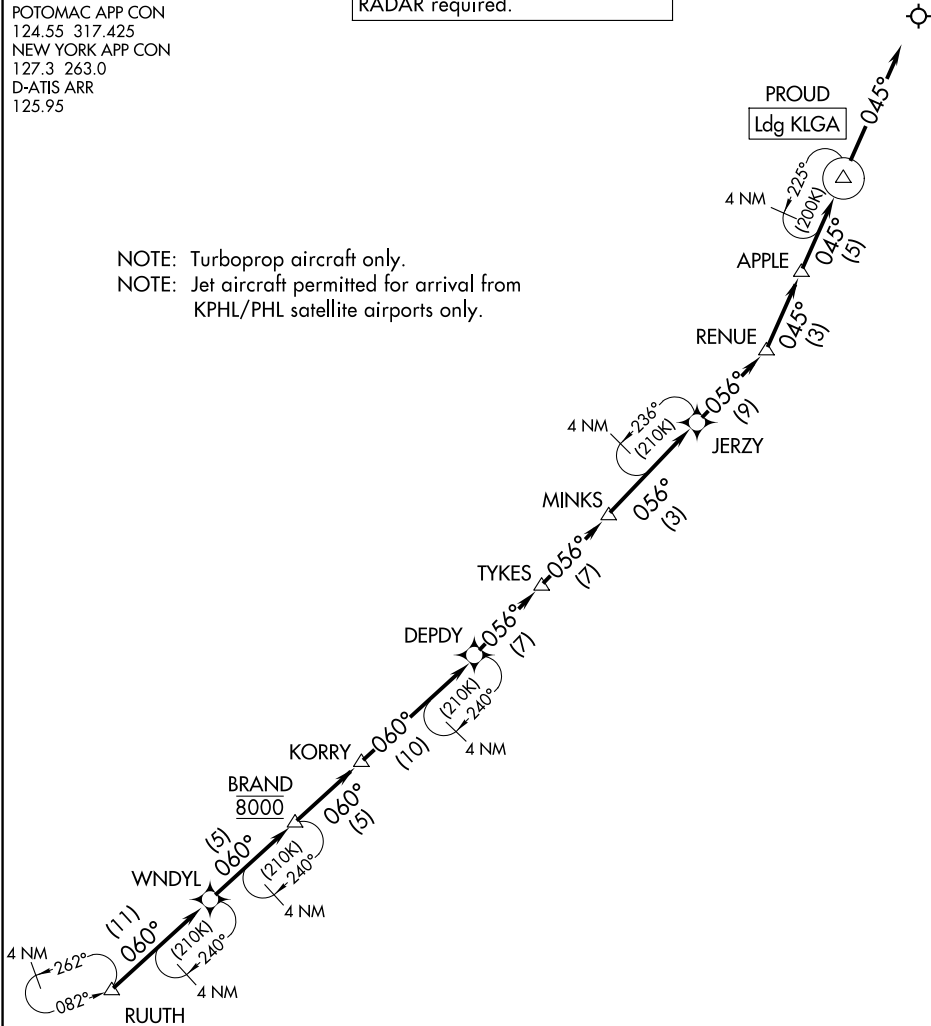
APPLE THREE ARRIVAL (RNAV) Arrival Routes

NEW YORK, NEW YORK

PHILADELPHIA APP CON
 119.75 269.25
 POTOMAC APP CON
 124.55 317.425
 NEW YORK APP CON
 127.3 263.0
 D-ATIS ARR
 125.95

RNAV 1 - DME/DME/IRU or GPS.
 RADAR required.

NOTE: Turboprop aircraft only.
 NOTE: Jet aircraft permitted for arrival from
 KPHL/PHL satellite airports only.



NOTE: Chart not to scale.

ARRIVAL ROUTE DESCRIPTION

From RUUTH on track 060° to WNDYL, then on track 060° to cross BRAND at 8000, then on track 060° to KORRY, then on track 060° to DEPDY, then on track 056° to TYKES, then on track 056° to MINKS, then on track 056° to JERZY, then on track 056° to RENUUE, then on track 045° to APPLE, then on track 045° to PROUD, then on track 045°. Expect RADAR vectors to final approach course.

APPLE THREE ARRIVAL (RNAV) Arrival Routes

(RUUTH.APPLE3) 25JAN24

NEW YORK, NEW YORK

LAGUARDIA (LGA)

NE-2, 16 APR 2026 to 14 MAY 2026

NE-2, 16 APR 2026 to 14 MAY 2026