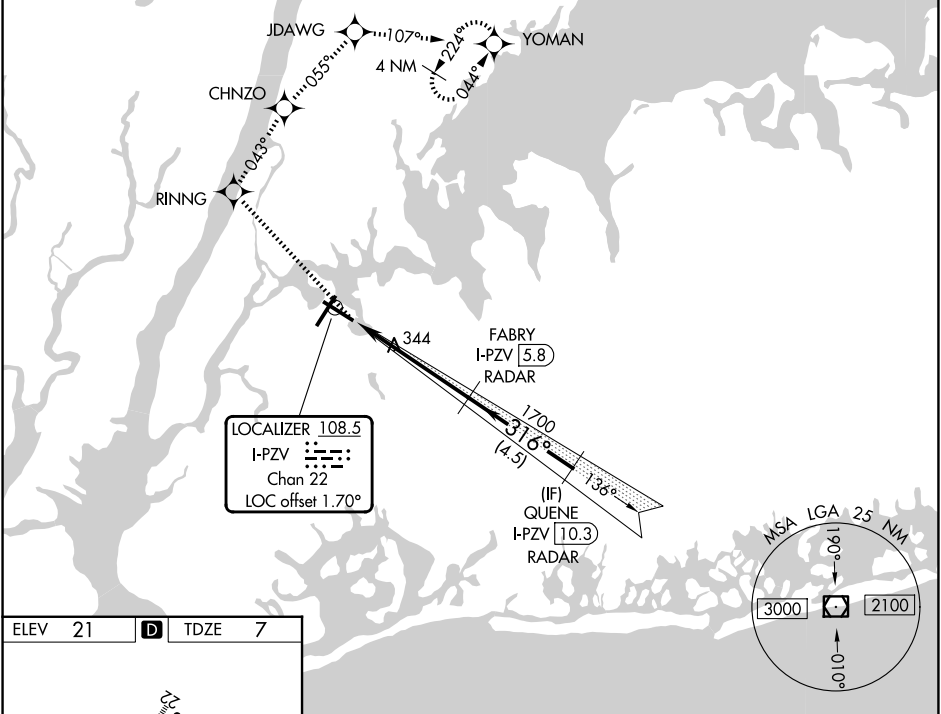


LOC/DME I-PZV <b>108.5</b> Chan <b>22</b>	APP CRS <b>316°</b>	Rwy Ldg TDZE Apt Elev	<b>7002</b> <b>7</b> <b>21</b>
---	------------------------	-----------------------------	--------------------------------------

# LOC RWY 31

LAGUARDIA (LGA)

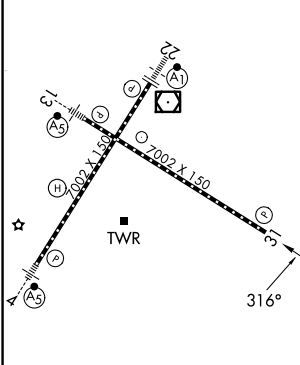
RNP APCH - GPS.		MISSED APPROACH: (Do not exceed 210K until YOMAN) Climb to 3000 direct RINNG and on track 043° to CHNZO and on track 055° to JDAWG and on track 107° to YOMAN and hold.	
RADAR required for procedure entry. DME required.			
<p><b>▼</b> Rwy 31 helicopter visibility reduction below RVR 4000 NA.</p> <p><b>▲</b> Circling NA northwest of Rwy 4 and southwest of Rwy 13.</p>			
D-ATIS <b>125.95</b>	NEW YORK APP CON <b>120.8 263.0</b>	LAGUARDIA TOWER <b>118.7 263.0</b>	GND CON <b>121.7 263.0</b>



NE-2, 16 APR 2026 to 14 MAY 2026

NE-2, 16 APR 2026 to 14 MAY 2026

ELEV 21	<b>D</b>	TDZE 7
---------	----------	--------



TDZ/CL Rwys 4, 13 and 22  
HIRL Rwys 4-22 and 13-31  
REIL Rwy 31

3000	RINNG	CHNZO	JDAWG	YOMAN
↑	✦	✦	✦	✦
	tr 043°	tr 055°	tr 107°	
VGSi and descent angles not coincident (VGSi Angle 3.00/TCH 71).		FABRY I-PZV [5.8] RADAR	QUENE I-PZV [10.3] RADAR	
I-PZV [0.8]	I-PZV [2.4]	1700	1700	1700
	316°	316°	316°	
	3.06° TCH 55			
	1.6	3.4 NM	4.5 NM	
CATEGORY	A	B	C	D
S-31	600/55	593 (600-1)	600-1¾	593 (600-1¾)
CIRCLING	680-1	659 (700-1)	700-2 679 (700-2)	760-2¼ 739 (800-2¼)