

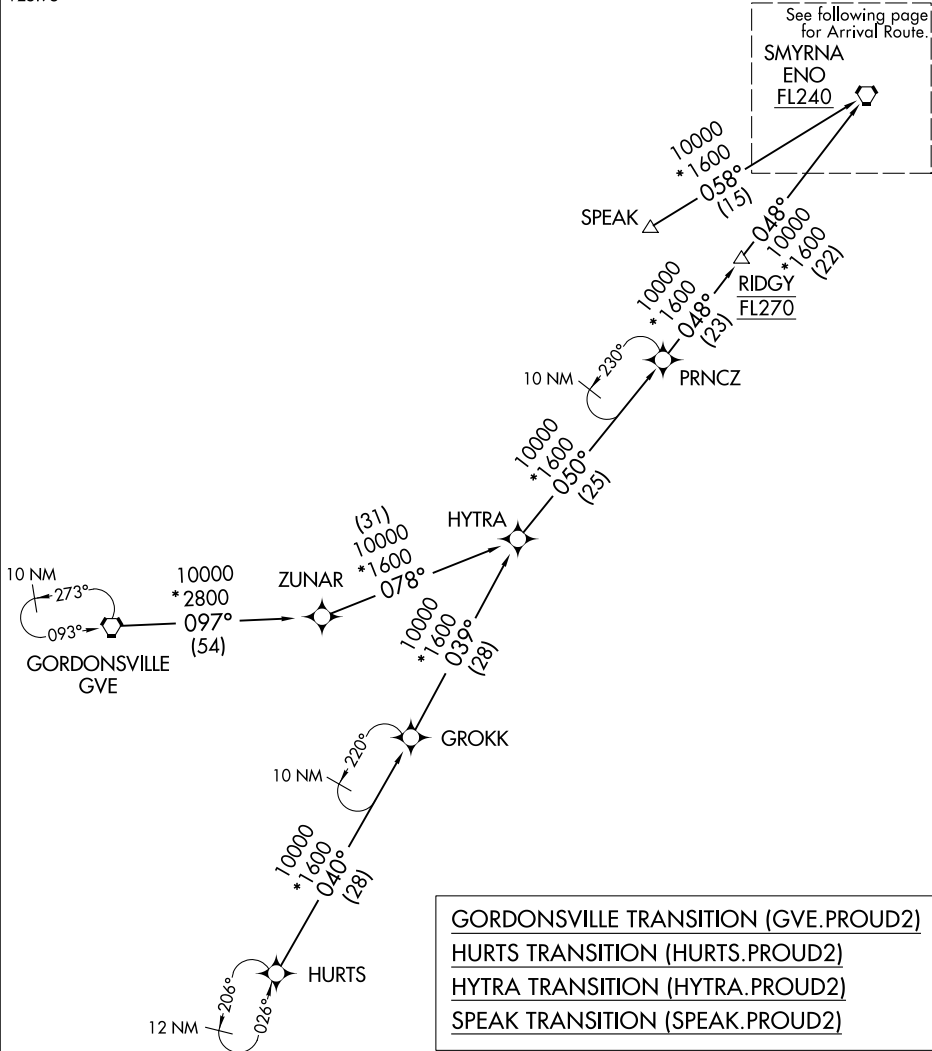
PROUD TWO ARRIVAL (RNAV) Transition Routes

NEW YORK APP CON  
127.3 263.0  
D-ATIS ARR  
125.95

RNAV 1 - DME/DME/IRU or GPS.

RADAR required.

See following page  
for Arrival Route.  
SMYRNA  
ENO  
FL240



NE-2, 16 APR 2026 to 14 MAY 2026

NE-2, 16 APR 2026 to 14 MAY 2026

NOTE: Jet aircraft only.  
NOTE: SPEAK transition for Washington Metropolitan departures only.

(CONTINUED ON FOLLOWING PAGE)

NOTE: Chart not to scale.

PROUD TWO ARRIVAL (RNAV) Arrival Routes

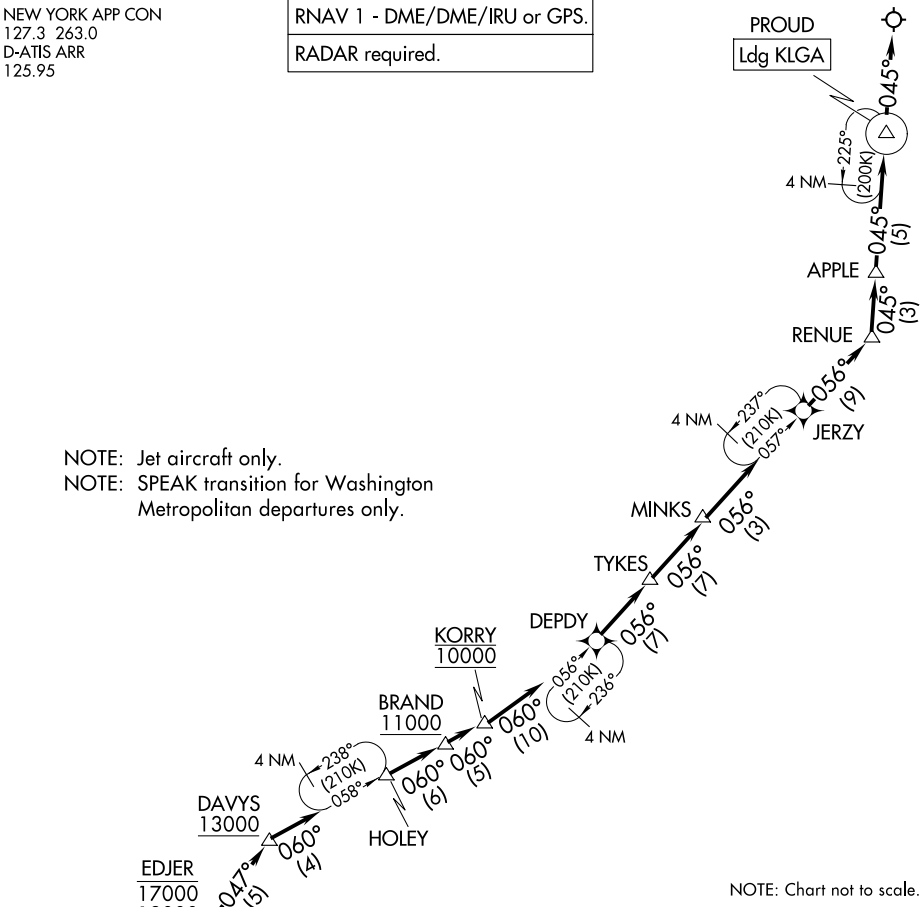
NEW YORK, NEW YORK

NEW YORK APP CON  
127.3 263.0  
D-ATIS ARR  
125.95

RNAV 1 - DME/DME/IRU or GPS.

RADAR required.

PROUD  
Ldg KLG A



NOTE: Jet aircraft only.  
NOTE: SPEAK transition for Washington Metropolitan departures only.

NOTE: Chart not to scale.

ARRIVAL ROUTE DESCRIPTION

From ENO VORTAC on track 047° to cross SKIPY between FL190 and FL220, then on track 048° to cross BESSI at or above 17000, then on track 046° to cross EDJER between 13000 and 17000, then on track 047° to cross DAVYS at or above 13000, then on track 060° to HOLEY, then on track 060° to cross BRAND at or above 11000, then on track 060° to cross KORRY at 10000, then on track 060° to DEPDI, then on track 056° to TYKES, then on track 056° to MINKS, then on track 056° to JERZY, then on track 056° to RENU, then on track 045° to APPLE, then on track 045° to PROUD, then on track 045°. Expect RADAR vectors to final approach course.

NE-2, 16 APR 2026 to 14 MAY 2026

NE-2, 16 APR 2026 to 14 MAY 2026