

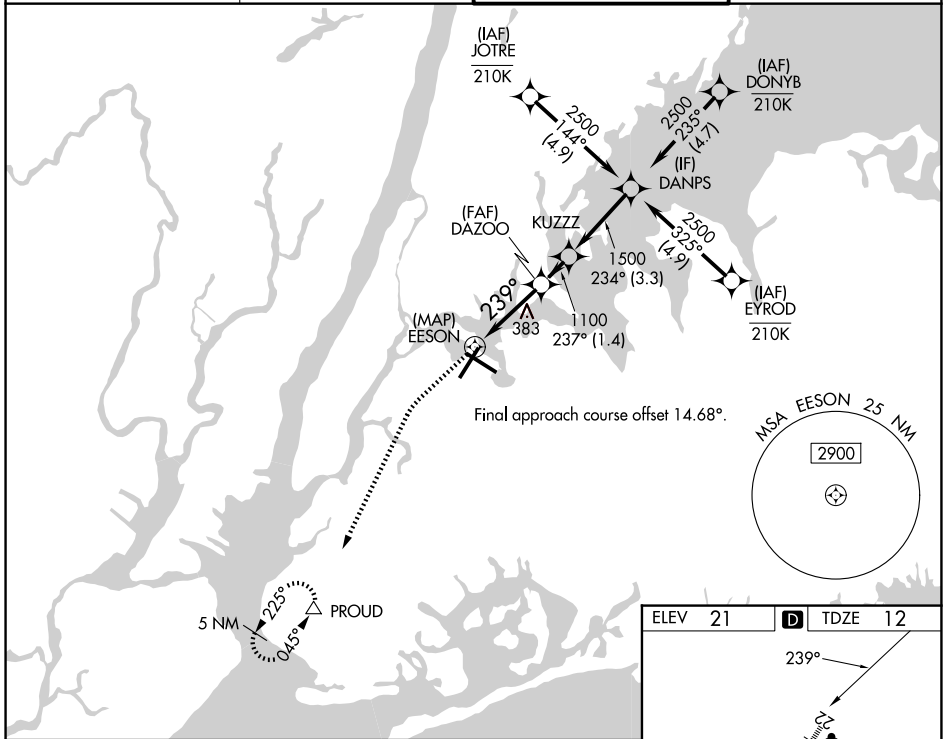
| | | |
|-------------|----------|-------------|
| APP CRS | Rwy Ldg | 7002 |
| 239° | TDZE | 12 |
| | Apt Elev | 21 |

RNAV (GPS) X RWY 22

LAGUARDIA (LGA)

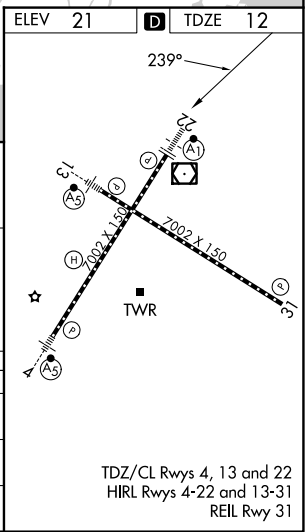
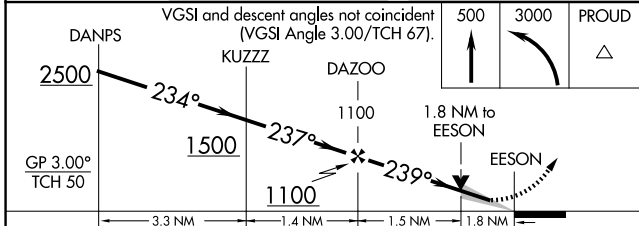
| | | |
|--|------------|--|
| RNP APCH - GPS. | ALSF-1 | MISSED APPROACH: Climb to 500 then climbing left turn to 3000 direct PROUD and hold, continue climb-in-hold to 3000. |
| Circling NA northwest of Rwy 4 and southwest of Rwy 13. For uncompensated Baro-VNAV systems, LNAV/VNAV NA below -11°C or above 54°C. For inop ALS, increase LNAV/VNAV all Cats visibility to RVR 5500; increase LNAV Cats C/D visibility to 1¼ SM. | | |

| | | | |
|-------------------------|--|---------------------------------------|-------------------------------|
| D-ATIS 125.95 | NEW YORK APP CON 120.8 263.0 | LAGUARDIA TOWER 118.7 263.0 | GND CON 121.7 263.0 |
|-------------------------|--|---------------------------------------|-------------------------------|



NE-2, 16 APR 2026 to 14 MAY 2026

NE-2, 16 APR 2026 to 14 MAY 2026



| | | | | |
|-----------|--------|-------------|----------------------|------------------------|
| ELEV | 21 | TDZE | 12 | |
| CATEGORY | A | B | C | D |
| LNAV/VNAV | DA | 381/35 | 369 (400-%) | |
| LNAV MDA | 640/24 | 628 (700-½) | 640-1⅓ | 628 (700-1⅓) |
| CIRCLING | 680-1 | 659 (700-1) | 700-2 679 (700-2) | 760-2¼ 739 (800-2¼) |

TDZ/CL Rws 4, 13 and 22
HIRL Rws 4-22 and 13-31
REIL Rwy 31