

APP CRS	Rwy Ldg	<b>7002</b>
<b>314°</b>	TDZE	<b>7</b>
	Apt Elev	<b>21</b>

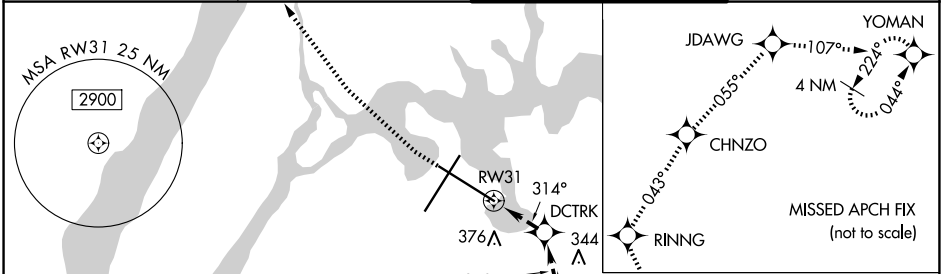
# RNAV (GPS) X RWY 31

LAGUARDIA (LGA)

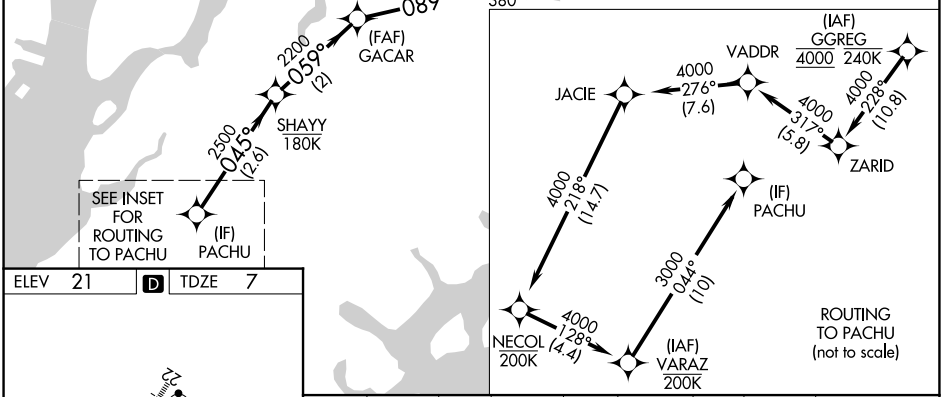
RNP APCH - GPS.  
 RADAR required.  
 Rwy 31 helicopter visibility reduction below 3/4 SM NA.

MISSED APPROACH: (Do not exceed 165K until Rwy 31 and do not exceed 210K until YOMAN) Climbing right turn to 3000 direct RINNG and on track 043° to CHNZO and on track 055° to JDAWG and on track 107° to YOMAN and hold.

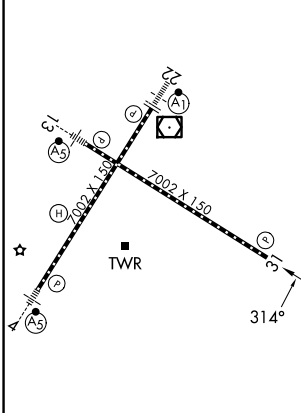
D-ATIS <b>125.95</b>	NEW YORK APP CON <b>120.8 263.0</b>	LAGUARDIA TOWER <b>118.7 263.0</b>	GND CON <b>121.7 263.0</b>
-------------------------	--	---------------------------------------	-------------------------------



385△ DRRYL VGF (Visual Guidance Fix) 089° KEYTH 044°  
 Cross DRRYL, fly visual to airport along depicted track 044° to KEYTH then 359° to DCTRK, then 314° to Rwy 31.

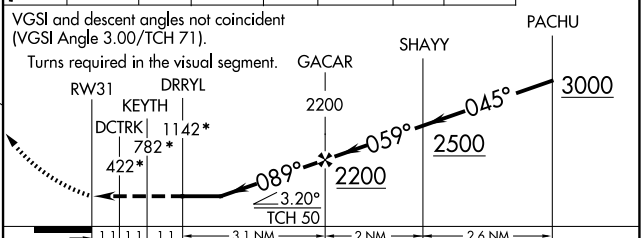


ELEV 21	<b>D</b>	TDZE 7
---------	----------	--------



TDZ/CL Rws 4, 13 and 22  
 HIRL Rws 4-22 and 13-31  
 REIL Rwy 31

3000	RINNG	CHNZO	JDAWG	YOMAN	* Check ALT.
	tr 043°		tr 055°	tr 107°	



CATEGORY	A	B	C	D
LNAV MDA	1160-4 1153 (1200-4)			

NE-2, 16 APR 2026 to 14 MAY 2026

NE-2, 16 APR 2026 to 14 MAY 2026