

# RNAV (GPS) Y RWY 31

LAGUARDIA (LGA)

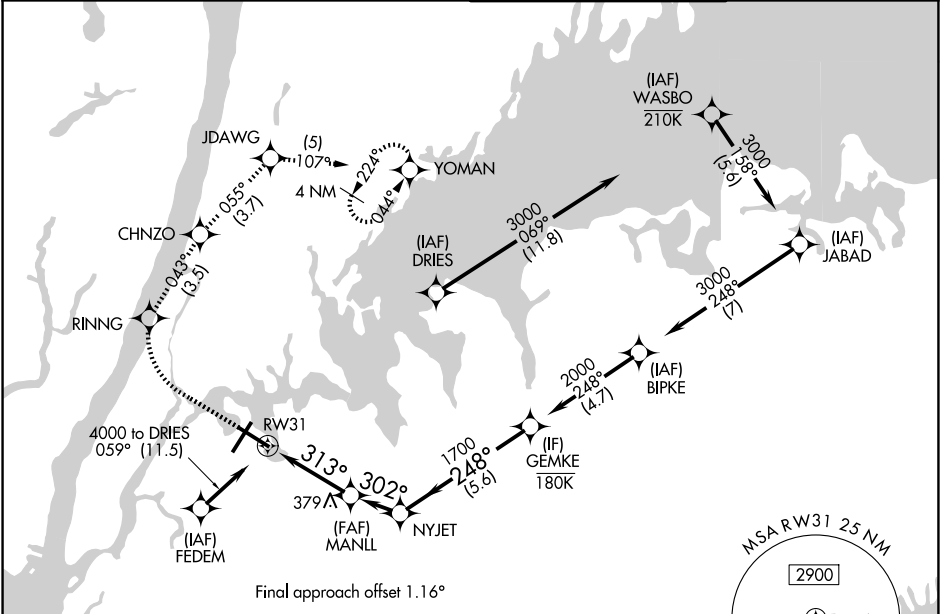
APP CRS	Rwy Ldg	<b>7002</b>
<b>313°</b>	TDZE	<b>7</b>
	Apt Elev	<b>21</b>

RNP APCH - GPS.

**▼** Rwy 31 helicopter visibility reduction below RVR 5000 NA. For uncompensated Baro-VNAV systems, LNAV/VNAV NA below -11°C or above 54°C. Circling NA northwest of Rwy 4 and southwest of Rwy 13.

**▲** MISSED APPROACH: (Do not exceed 210K until YOMAN) Climb to 620 then climbing right turn to 3000 direct RINNG and on track 043° to CHNZO and on track 055° to JDAWG and on track 107° to YOMAN and hold.

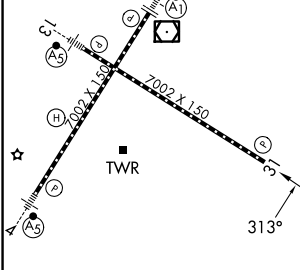
D-ATIS <b>125.95</b>	NEW YORK APP CON <b>120.8 263.0</b>	LAGUARDIA TOWER <b>118.7 263.0</b>	GND CON <b>121.7 263.0</b>
-------------------------	--	---------------------------------------	-------------------------------



NE-2, 16 APR 2026 to 14 MAY 2026

NE-2, 16 APR 2026 to 14 MAY 2026

ELEV 21	<b>D</b>	TDZE 7
---------	----------	--------



TDZ/CL Rws 4, 13 and 22	HIRL Rws 4-22 and 13-31	REL Rwy 31
-------------------------	-------------------------	------------

620	3000	RINNG	tr 043°	CHNZO	tr 055°	JDAWG	tr 107°	YOMAN	GEMKE
									2000
VGSI and RNAV glidepath not coincident (VGSI Angle 3.00/TCH 71).					NYJET				
RW31					248°				
1200					1700				
3.5 NM					1.9 NM				
5.6 NM									
GP 3.10°					TCH 50				

CATEGORY	A	B	C	D
LNAV/ DA VNAV	618-1¾		611 (600-1¾)	
LNAV MDA	640/55	633 (700-1)	640-1¾	633 (700-1¾)
CIRCLING	680-1	659 (700-1)	700-2 679 (700-2)	760-2¼ 739 (800-2¼)