

WAAS CH <b>48928</b> <b>W31A</b>	APP CRS <b>314°</b>	Rwly Ldg TDZE Apt Elev	<b>7002</b> <b>7</b> <b>21</b>
--	------------------------	------------------------------	--------------------------------------

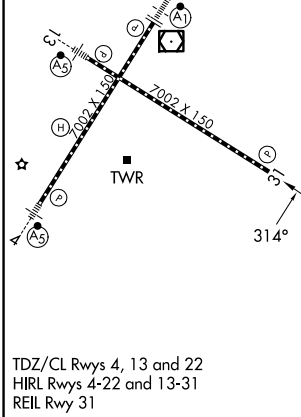
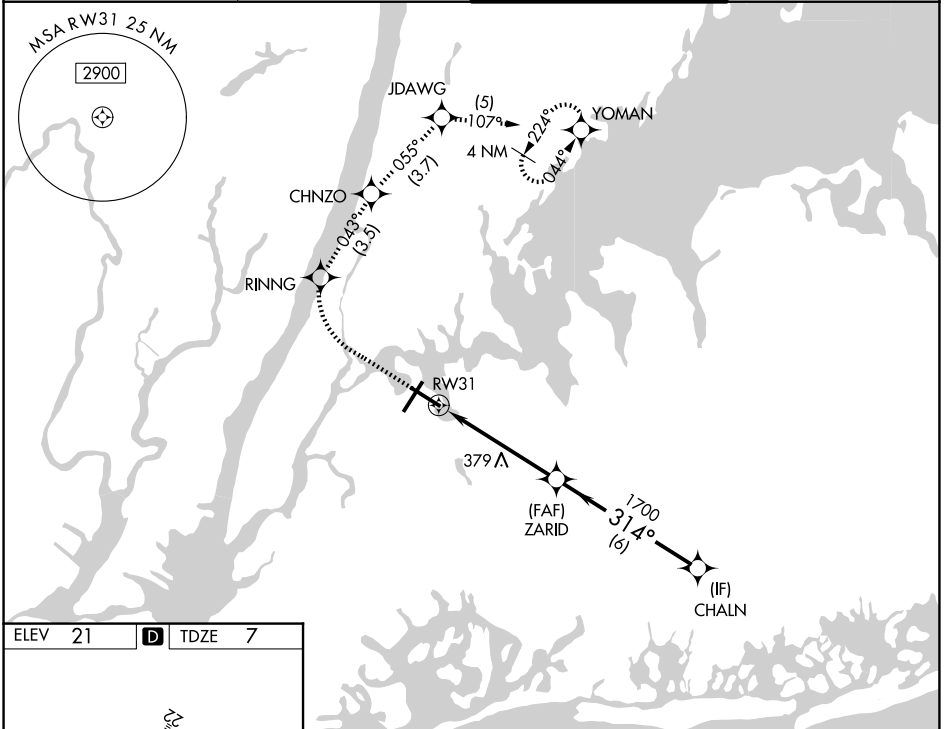
# RNAV (GPS) Z RWY 31

LAGUARDIA (LGA)

RNP APCH - GPS.  
 ▼ Rwy 31 helicopter visibility reduction below RVR 5000 NA.  
 ▲ For uncompensated Baro-VNAV systems, LNAV/VNAV NA below -11°C or above 54°C. Circling NA northwest of Rwy 4 and southwest of Rwy 13.

MISSED APPROACH: (Do not exceed 210K until YOMAN)  
 Climb to 620 then climbing right turn to 3000 direct RINNG and on track 043° to CHNZO and on track 055° to JDAWG and on track 107° to YOMAN and hold, continue climb-in-hold to 3000.

D-ATIS <b>125.95</b>	NEW YORK APP CON <b>120.8 263.0</b>	LAGUARDIA TOWER <b>118.7 263.0</b>	GND CON <b>121.7 263.0</b>
-------------------------	--	---------------------------------------	-------------------------------



ELEV 21	<b>D</b>	TDZE 7							
620	3000	RINNG	tr 043°	CHNZO	tr 055°	JDAWG	tr 107°	YOMAN	CHALN
VGSI and RNAV glidepath not coincident (VGSI Angle 3.00/TCH 71).									
RWY 31 ZARID 1700 CHALN 2000 GP 3.10° TCH 50									
CATEGORY		A	B	C	D				
LPV DA		330/50		323 (400-1)					
LNAV/VNAV DA		618-1¼		611 (600-1¼)					
LNAV MDA		640/55	633 (700-1)		640-1¼	633 (700-1¼)			
CIRCLING		680-1	659 (700-1)		700-2	679 (700-2)		760-2¼	739 (800-2¼)

NE-2, 16 APR 2026 to 14 MAY 2026

NE-2, 16 APR 2026 to 14 MAY 2026