

VADDR ONE ARRIVAL (RNAV) Transition Routes
 (BASEY.VADDR1) 27NOV25

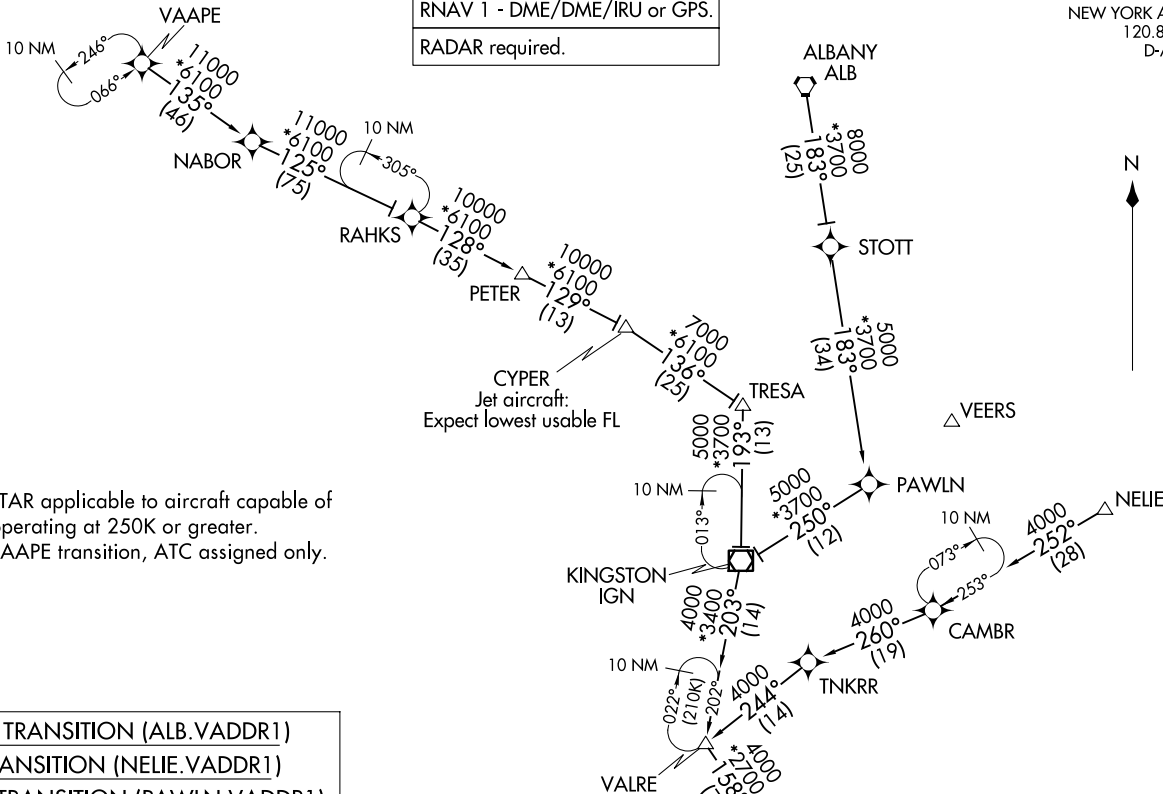
NEW YORK, NEW YORK
 LAGUARDIA (LGA)

NEW YORK APP CON
 120.8 257.65
 D-ATIS ARR
 125.95

VADDR ONE ARRIVAL (RNAV) Transition Routes
 (BASEY.VADDR1) 26022

AL-289 (FAA)
 LAGUARDIA (LGA)
 NEW YORK, NEW YORK

RNAV 1 - DME/DME/IRU or GPS.
 RADAR required.



NOTE: STAR applicable to aircraft capable of operating at 250K or greater.
 NOTE: VAAPE transition, ATC assigned only.

- ALBANY TRANSITION (ALB.VADDR1)
- NELIE TRANSITION (NELIE.VADDR1)
- PAWLN TRANSITION (PAWLN.VADDR1)
- RAHKS TRANSITION (RAHKS.VADDR1)
- TRESA TRANSITION (TRESA.VADDR1)
- VAAPE TRANSITION (VAAPE.VADDR1)

(CONTINUED ON FOLLOWING PAGE)

BASEY
 Jet aircraft:
 Expect 8000
 See following page
 for Arrival Route.

NOTE: Chart not to scale.

(BASYE.VADDR1) 25331

AL-289 (FAA)

LAGUARDIA (LGA)

VADDR ONE ARRIVAL (RNAV) Arrival Routes

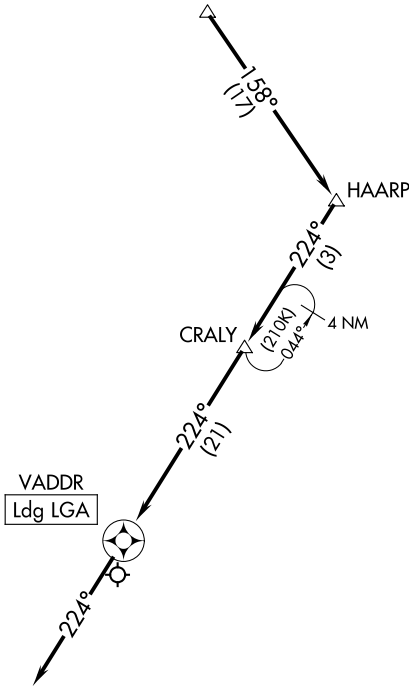
NEW YORK, NEW YORK

NEW YORK APP CON
120.8 257.65
D-ATIS ARR
125.95

RNAV 1 - DME/DME/IRU or GPS.

RADAR required.

BASYE
Jet Aircraft:
Expect 8000



NOTE: STAR applicable to aircraft capable of operating at 250K or greater.
NOTE: VAAPE transition, ATC assigned only.

NOTE: Chart not to scale.

ARRIVAL ROUTE DESCRIPTION

From BASYE on track 158° to HAARP, then on track 224° to CRALY, then on track 224° to VADDR, then on track 224°. Expect RADAR vectors to final approach course.

VADDR ONE ARRIVAL (RNAV) Arrival Routes
(BASYE.VADDR1) 27NOV25

NEW YORK, NEW YORK
LAGUARDIA (LGA)

NE-2, 16 APR 2026 to 14 MAY 2026

NE-2, 16 APR 2026 to 14 MAY 2026