

HI-TACAN Y RWY 10

TACAN NGU Chan 86Y	APCH CRS 097°	Rwy Idg 8071 TDZE 14 Arpt Elev 15
------------------------------	-------------------------	--

[USN]

NORFOLK NS (CHAMBERS FLD) (KNGU)

RNAV or RADAR required.

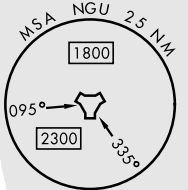
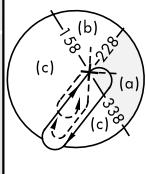
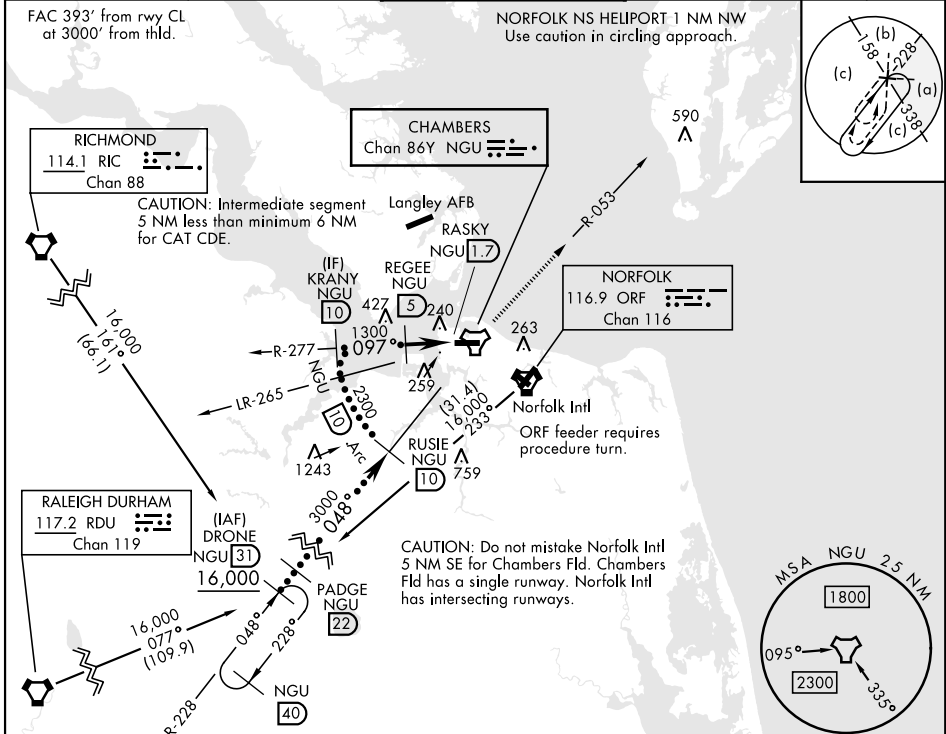
ALSIF-2

MISSED APPROACH: Climb left turn to 2300 via NGU TACAN R-053 then as directed by ATC.

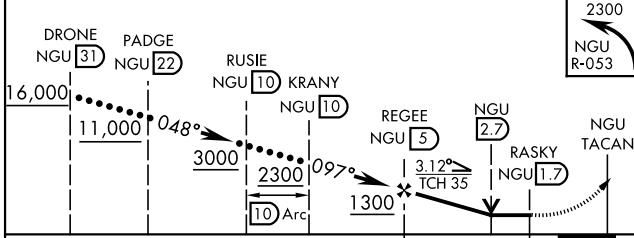
* When ALS inop, increase CAT CDE vis to 1½ miles.
** Circling not authorized S of Rwy 10-28.



ATIS 118.425 338.225	APP CON 118.9 273.475	CHAMBERS TOWER 124.3 379.15	GND CON 121.8 370.85	ASR/PAR
--------------------------------	---------------------------------	---------------------------------------	--------------------------------	---------

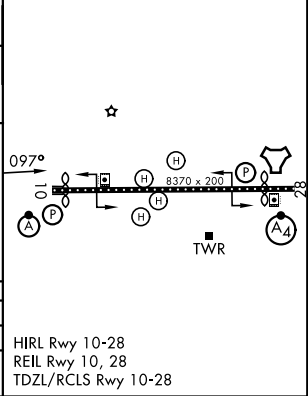


EMERG SAFE ALT 100 NM 6100



ELEV	15	TDZE	14
------	----	------	----

CATEGORY	C	D	E
S-10*	520-1	506	(600-1)
CIRCLING**	540-1½ 525 (600-1½)	600-2	585 (600-2)



NE-3, 16 APR 2026 to 14 MAY 2026

NE-3, 16 APR 2026 to 14 MAY 2026