

HI-TACAN Y RWY 28

TACAN NGU Chan 86Y	APCH CRS 290°	Rwy ldg TDZE Arprt Elev 7375 14 15
------------------------------	-------------------------	--

[USN]

NORFOLK NS (CHAMBERS FLD) (KNGU)

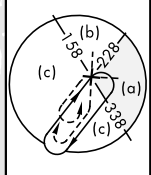
RNAV or RADAR required	MALSF 	MISSED APPROACH: Climb to 2300 on NGU TACAN R-277 then as directed by ATC.
<p>▼ * When ALS inop, increase CAT CDE vis to 1 1/2 miles.</p> <p>** Circling not authorized S of Rwy 10-28.</p>		

ATIS 118.425 338.225	APP CON 118.9 273.475	CHAMBERS TOWER 124.3 379.15	GND CON 121.8 370.85	ASR/PAR
--------------------------------	---------------------------------	---------------------------------------	--------------------------------	---------

CAUTION:
Do not mistake Norfolk Intl 5 NM SE for Chambers Fld. Chambers Fld has a single rwy, Norfolk Intl has int runways.

NORFOLK NS HELIPORT 1 NM NW
Use caution in circling approach.

FAC 464 ft from rwy CL
at 3000 ft from thld.



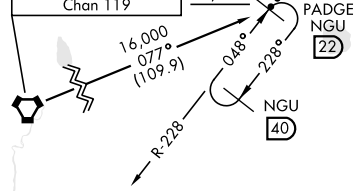
CHAMBERS
Chan 86Y NGU

NORFOLK
116.9 ORF
Chan 116

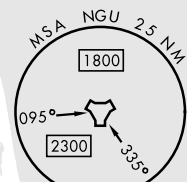
ORF Feeder requires
procedure turn.

RICHMOND
114.1 RIC
Chan 88

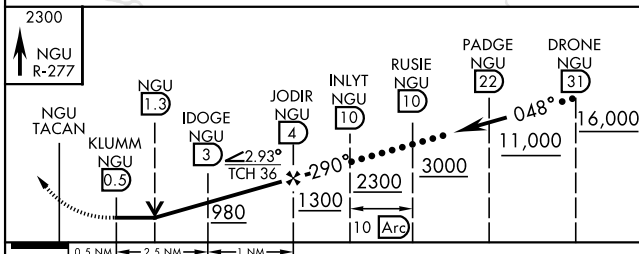
RALEIGH DURHAM
117.2 RDU
Chan 119



CAUTION: Arc segment
enters KNTU class D airspace.

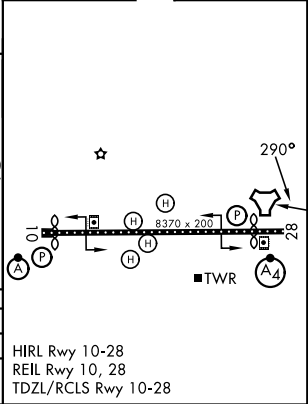


EMERG SAFE ALT 100 NM 6100



ELEV	15	TDZE	14
------	----	------	----

CATEGORY	C	D	E
S-28 *	460-1	446	(500-1)
CIRCLING **	540-1 1/2 525 (600-1 1/2)	600-2	585 (600-2)



HI-TACAN Y RWY 28

NE-3, 16 APR 2026 to 14 MAY 2026

NE-3, 16 APR 2026 to 14 MAY 2026